



R4862197

📍 Málaga Centro

REF# R4862197 645.000 €

BEDS

5

BATHS

2

BUILT

187 m²

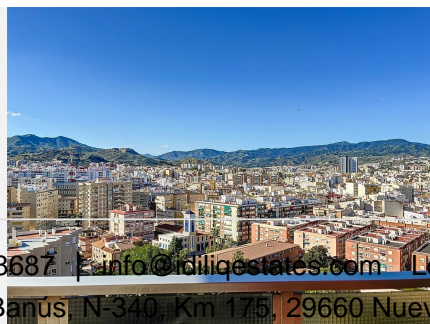
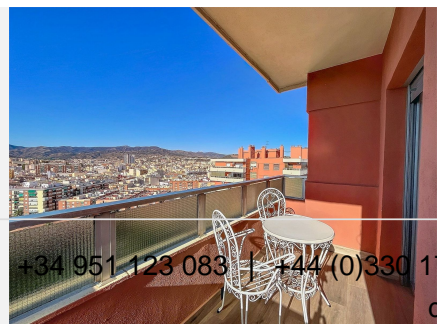
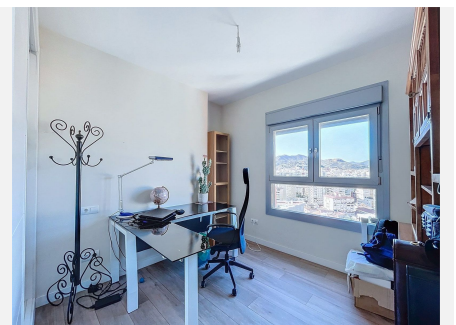
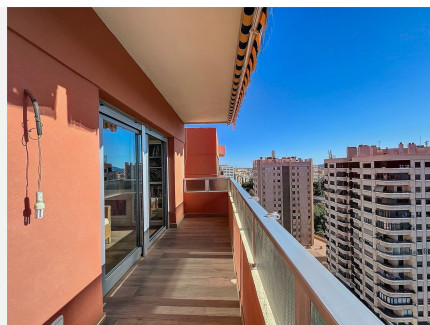
Fantastic apartment located in the central district of Malaga, specifically in the prestigious neighbourhood of Perchel Norte. This property is located next to the renowned Avenida de Andalucía, in the heart of the most important economic and financial area of the city. Unbeatable location. The area offers a wide variety of services and amenities, with proximity to large shopping centres such as El Corte Inglés, as well as a wide range of neighbourhood shops that cover all daily needs. Furthermore, communication is one of the strengths of this area, as it has the Guadalmedina metro line, which connects with the AVE María Zambrano station and Malaga International Airport, facilitating transport and mobility. We also highlight its proximity to the Historic Centre which is only a few minutes walk away. Building in perfect condition. The building, built in 1975, is in an impeccable state of conservation. It has a lift and doorman, guaranteeing security and comfort to its residents. It also includes a parking space in the building with direct access, an added value in this central location. Features of the property. The property, located on the top floor of the building, offers impressive views thanks to its height, a 13th floor and its corner format. With a built area of 187 square metres, it is distributed in five bedrooms, a living room semi-open to the kitchen and a wonderful terrace that allows you to enjoy exclusive views. The property includes two bathrooms, one of them en suite for the master bedroom. The property has been recently refurbished with high quality materials and careful

+34 951 123 083 | +44 (0)330 179 8687 | info@idiliqestates.com Local 28, Edificio D, Centro de Negocios Puerta de Banús, N-340, Km 175, 29660 Nueva Andalucía

IDILIQ

ESTATES

attention to detail, so it does not require any additional investment to be ready to move into.



IDILIQ

ESTATES

