



## MIDDLE FLOOR APARTMENT 1 BEDROOM 1 BATHROOM IN CALAHONDA

 Calahonda

REF# R5099521    325.000 €

BEDS

1

BATHS

1

BUILT

36 m<sup>2</sup>

"Discover your new home by the sea! This spectacular 100% renovated apartment offers a modern and elegant design, with excellent quality materials that guarantee a cozy and functional environment. With 36 m<sup>2</sup> built, the property has a master bedroom with a built-in dressing room and a second room ideal as an office or adaptable to a second bedroom. The kitchen, integrated into the bright main living room, has been designed by Cocinas "SCHMIDT", which adds a touch of distinction to this space.

Imagine enjoying incredible views of the sea and the African coast from the 6th floor of this building with an elevator. The South-West orientation allows natural light to flood every corner, creating a warm and pleasant atmosphere. In addition, the hot/cold air conditioning in each room ensures your comfort throughout the year.

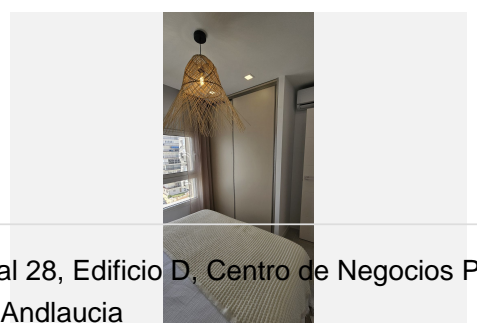
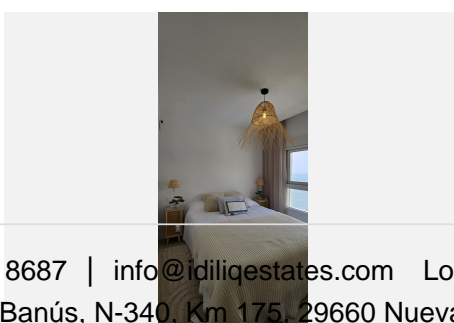
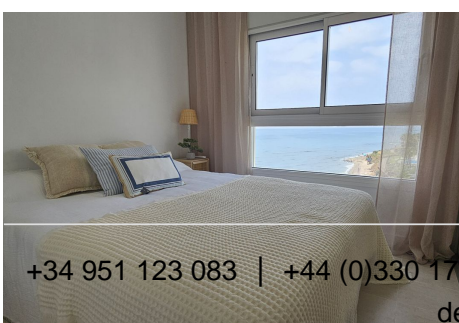
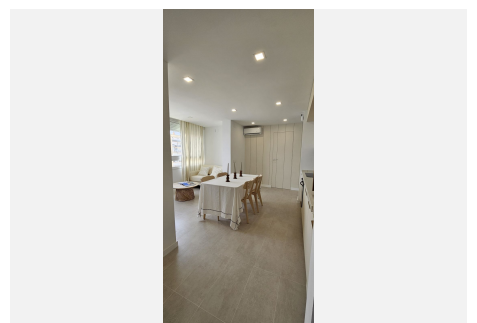
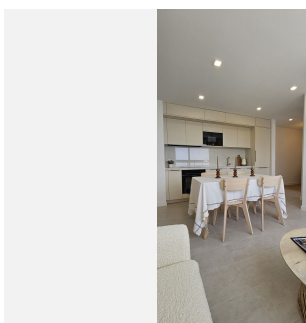
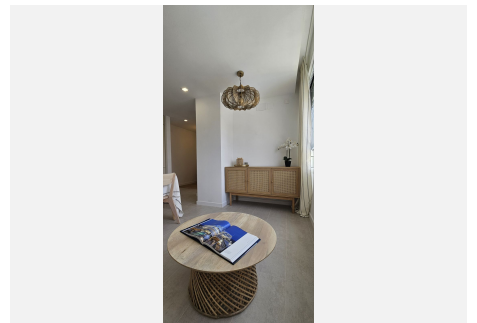
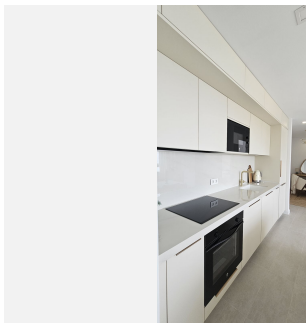
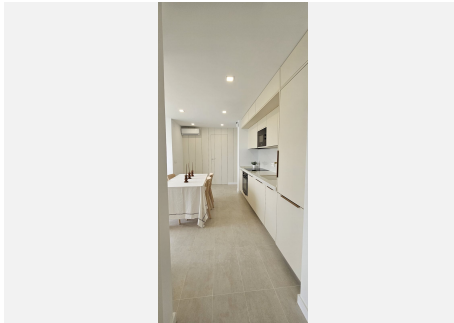
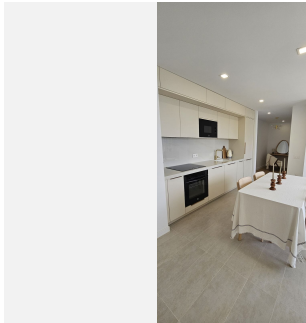
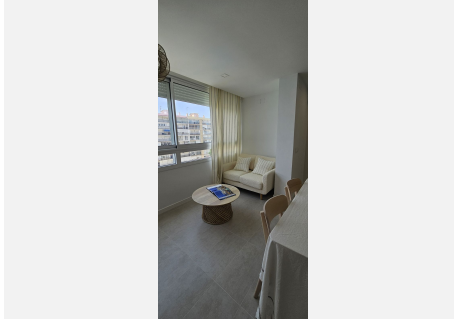
The location is unbeatable, with access to all the necessary services for your day-to-day life and adapted for people with reduced mobility. The house also includes a full bathroom and built-in wardrobes to maximize storage space. And for those days of relaxation, you can enjoy the pool and the community garden. Don't miss this opportunity!

+34 951 123 083 | +34 (0)330 179 8687 | [info@idiliqestates.com](mailto:info@idiliqestates.com) Local 28, Edificio D, Centro de Negocios Puerta de Banús, N-340, Km 175, 29660 Nueva Andalucía

# IDILIQ

ESTATES

miss the opportunity to live in this paradise!"



+34 951 123 083 | +44 (0)330 179 8687 | [info@idiliqestates.com](mailto:info@idiliqestates.com) Local 28, Edificio D, Centro de Negocios Puerta de Banús, N-340, Km 175, 29660 Nueva Andlucia

# IDILIQ

ESTATES

