



R4407625

 Benahavís

REF# R4407625 5.200.000 €

BEDS

4

BATHS

6

BUILT

967 m<sup>2</sup>

PLOT

1292 m<sup>2</sup>

TERRACE

200 m<sup>2</sup>

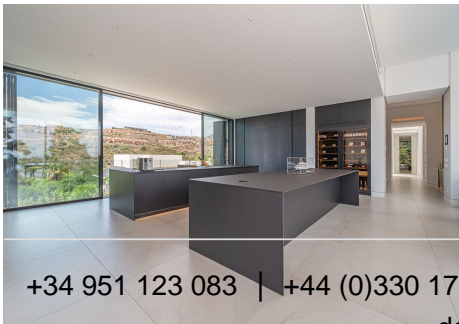
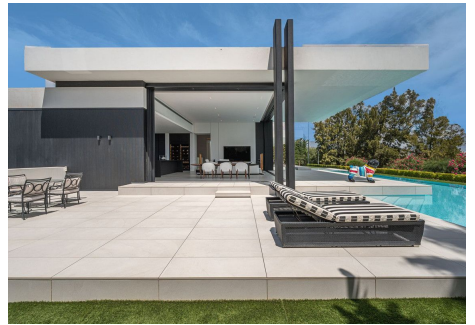
Introducing Villa Nebbia – an exceptional frontline golf property in the sought-after La Alqueria, Benahavis area. Situated near Puerto Banus and Estepona, the home offers an optimal blend of convenience and tranquillity. The property is designed by renowned Tobal Architects to showcase a perfect fusion of contemporary luxury and functional elegance. The residence boasts gorgeous vistas of La Concha mountain, the expansive sea stretching towards Marbella, and sunsets over Gibraltar, a testament to exceptional design. The avant-garde architecture allows natural light into the interior through automated 4.5-metre-high windows, seamlessly integrating indoor spaces with the inviting terrace and pool. In addition, the villa offers convenient access to necessary facilities and the beach, adding to this exceptional property's appeal. The villa unfolds predominantly across a single level, comprising a spacious open-plan kitchen, living, and dining area, and four generously-appointed en-suite bedrooms. The lower level provides ample room for a cinema, gym, or games room, complemented by an 8-car garage, laundry room, and storage facilities. Outdoor living is enhanced by lush gardens, sun terraces, a BBQ area, a sizable pool, and convenient WC and changing room facilities. Built to the highest standards, with careful attention to detail and custom interior design, Villa Nebbia guarantees exceptional quality and elegance. Situated in the coveted neighbourhood of La Alqueria, within the charming enclave of Benahavis, this urbanisation presents

+34 951 123 083 | +44 (0)330 179 8687 | [info@idiliqestates.com](mailto:info@idiliqestates.com) Local 28, Edificio D, Centro de Negocios Puerta de Banús, N-340, Km 175, 29660 Nueva Andalucía

# IDILIQ

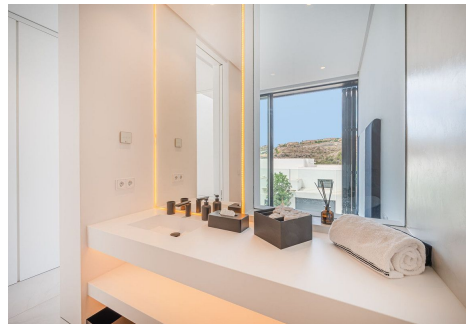
ESTATES

a range of detached luxury homes, each with its own expansive plot. La Alqueria's allure lies in its proximity to essential amenities, surrounded by esteemed golf courses and sporting venues. A stone's throw away from the Atalaya Golf & Country Club and an international school, La Alqueria offers breathtaking views and a lifestyle marked by convenience. A blend of open vistas, courtesy of the area's golf courses and the Mediterranean panorama, with Gibraltar's iconic rock and the Sierra Blanca mountains in the distance, sets an enchanting backdrop. All property information presented is provided directly by the property owner. Marbella Homes to Love acts solely as an intermediary and cannot guarantee the accuracy or completeness of these details. We recommend that prospective buyers conduct due diligence to verify important information. Thank you for your understanding.



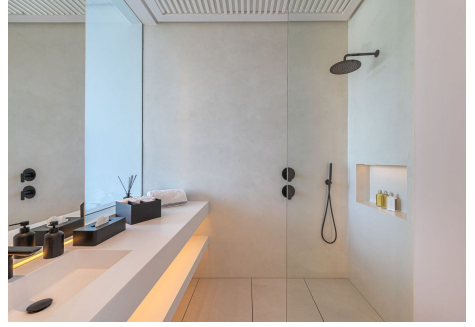
# IDILIQ

ESTATES



# IDILIQ

ESTATES



# IDILIQ

ESTATES

