

# IDILIQ

ESTATES



R4002478

 Benahavís

REF# R4002478 895.000 €

BEDS

4

BATHS

4

BUILT

320 m<sup>2</sup>

PLOT

380 m<sup>2</sup>

TERRACE

55 m<sup>2</sup>

Tucked in Monte Mayor Alto in Benahavis, this beautiful Andalusian house offers an exceptional living experience. Boasting stunning vistas of the sea and mountains, the home is a sanctuary of tranquillity and privacy. What truly sets this property apart is its unique charm and attention to security, featuring an exceptional 24-hour private security service that ensures peace of mind for its residents. Elegance and comfort blend perfectly in this beautiful home. With a southwest orientation, the property enjoys abundant natural light throughout the day. The outdoor spaces are a testament to the Mediterranean lifestyle, with sprawling terraces, a lovely pool area, a cosy chill-out corner, and an inviting dining space. The main level features a spacious living area with a fireplace connected to a well-appointed kitchen featuring a dining nook. Two additional bedrooms, a bathroom, and a guest toilet provide ample accommodation options. The first level hosts the luxurious primary bedroom with an en-suite bathroom, offering direct access to a terrace for a private retreat. A second bedroom with an attached bath completes this level. The lower level, thoughtfully designed with expansive glass doors, has direct access to the lounge by the poolside and garden. Underfloor heating and air conditioning ensure year-round comfort, while a garage and storage add practicality to luxury. Just outside this elegant home is a charming community. The residence benefits from its proximity to golf courses, adding a touch of allure for golf enthusiasts. Not far, you can explore the Costa

+34 951 123 083 | +44 (0)330 179 8687 | [info@idiliqestates.com](mailto:info@idiliqestates.com) Local 28, Edificio D, Centro de Negocios Puerta de Banús, N-340, Km 175, 29660 Nueva Andlucia

# IDILIQ

ESTATES

del Sol's lively culture and beautiful beaches. The gated complex provides heightened security, an entry phone and alarm systems. Nearby shops, schools, and essential amenities make daily life easier. The home embodies harmonious living, blending beauty, comfort, and security. It's a true gem in the heart of Benahavis.



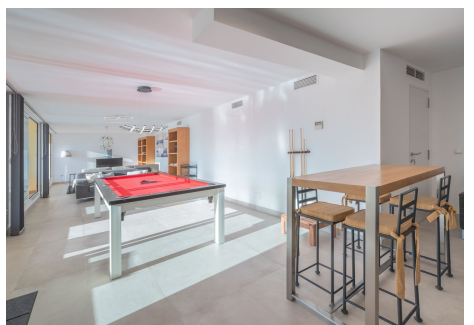
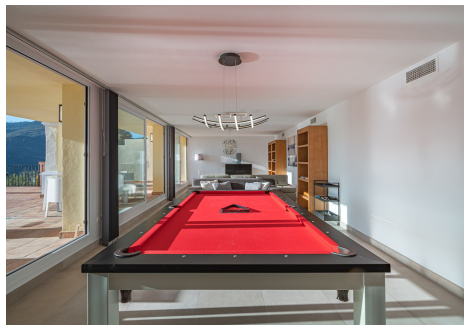
# IDILIQ

ESTATES



# IDILIQ

ESTATES



# IDILIQ

ESTATES



# IDILIQ

ESTATES

