



R4679176

📍 Sotogrande

REF# R4679176 450.000 €

BEDS

4

BATHS

3

BUILT

220 m²

TERRACE

140 m²

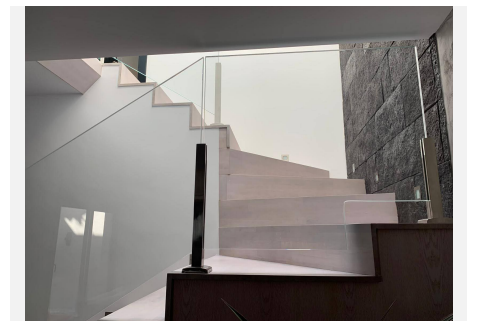
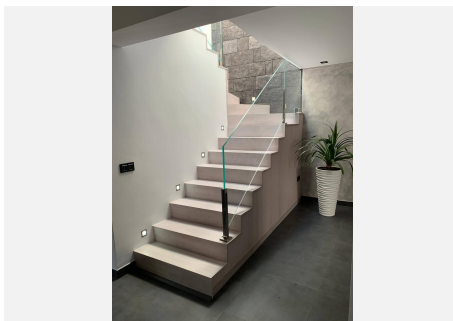
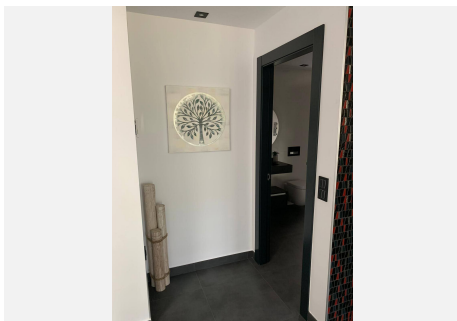
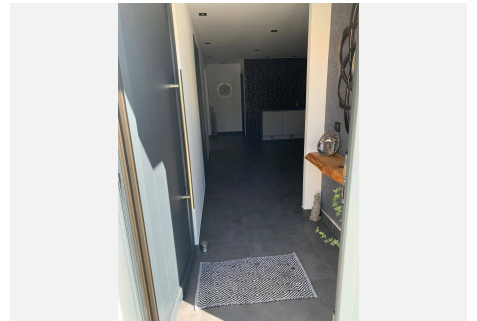
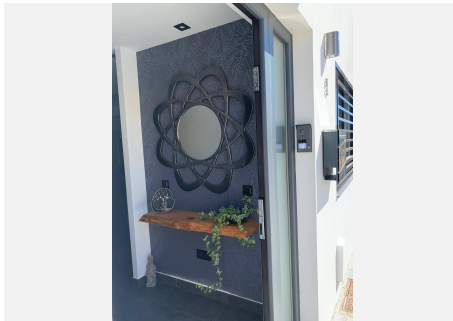
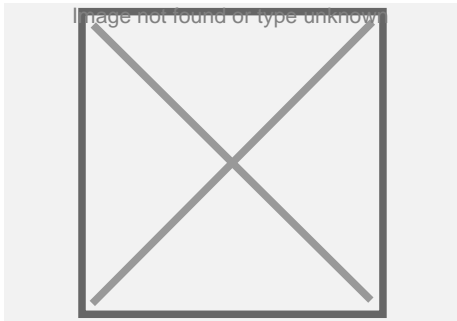
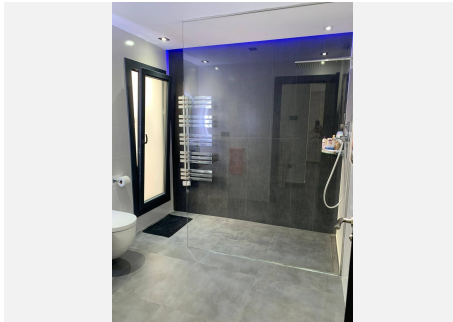
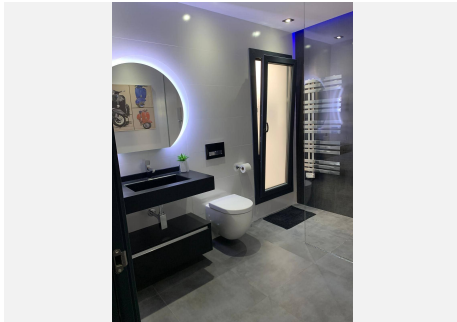
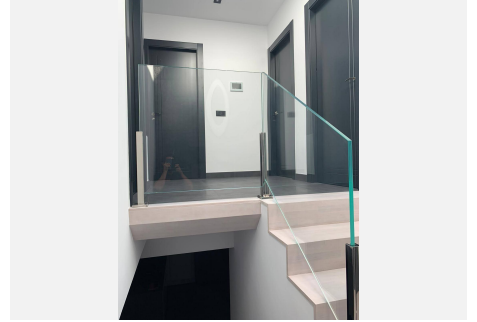
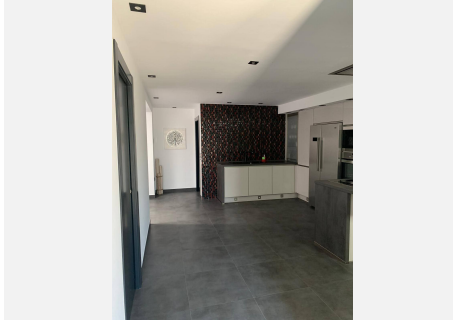
Immerse yourself in the essence of renewed luxury with this stunning home, where every detail has been carefully selected to offer an unparalleled living experience. Located in a privileged area, this property not only promises a comfortable and connected life, thanks to its proximity to health centers, bus stops, schools, shopping centers and supermarkets, but also stands as a balcony towards impressive panoramas that capture the majesty of the Rock of Gibraltar, the serenity of the mountains and the unmistakable beauty of the beach. Completely renovated to reflect a contemporary and elegant standard of living, this home extends over two floors designed to maximize space and light. On the ground floor, a cozy living room is adorned with a fireplace that invites moments of relaxation and conviviality. The modern and functional kitchen, along with a bedroom and a full bathroom, provides comfort and practicality to daily life. The magic continues on the second floor, where three additional bedrooms offer refuge and privacy. A full bathroom ensures functionality, while a living terrace, equipped with a barbecue, promises to be the setting for unforgettable outdoor gatherings. The final touch is provided by an exquisite additional terrace that houses a jacuzzi and a solarium area, from where views of the Rock of Gibraltar and the mountains become a daily spectacle. This property is not just a house; It is a testament to quality and design, in perfect condition and with top-notch finishes that stand out in every corner. The inclusion of a garage space adds incalculable

+34 951 123 083 | +44 (0)330 179 8687 | info@idiliqestates.com Local 28, Edificio D, Centro de Negocios Puerta de Banús, N-340, Km 175, 29660 Nueva Andlucia

IDILIQ

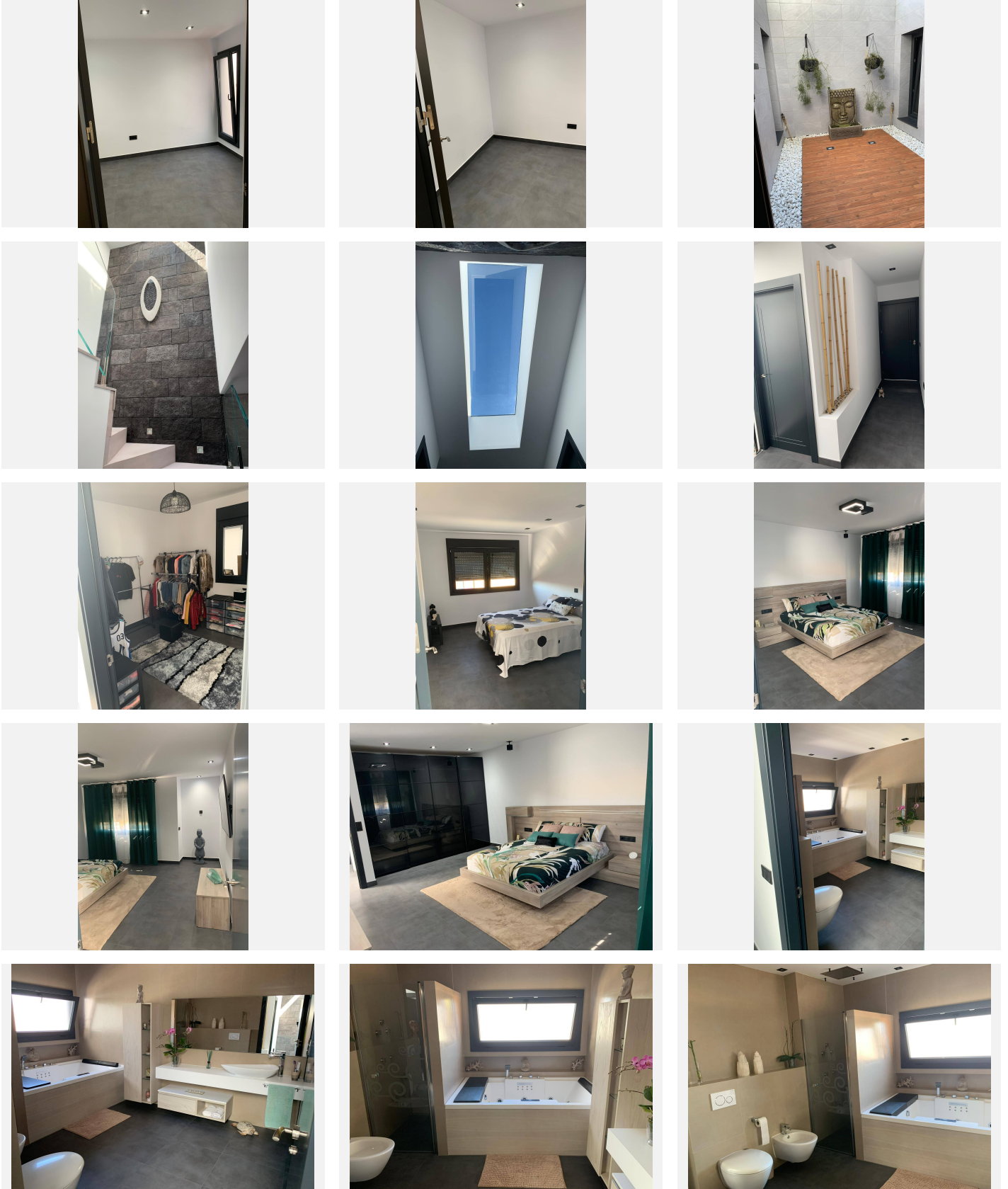
ESTATES

value to this offer, thus completing a package where luxury, comfort and exceptional views come together to create a truly extraordinary home. A unique opportunity for those seeking to elevate their lifestyle, surrounded by natural beauty and with all urban amenities within reach.



IDILIQ

ESTATES



IDILIQ

ESTATES

