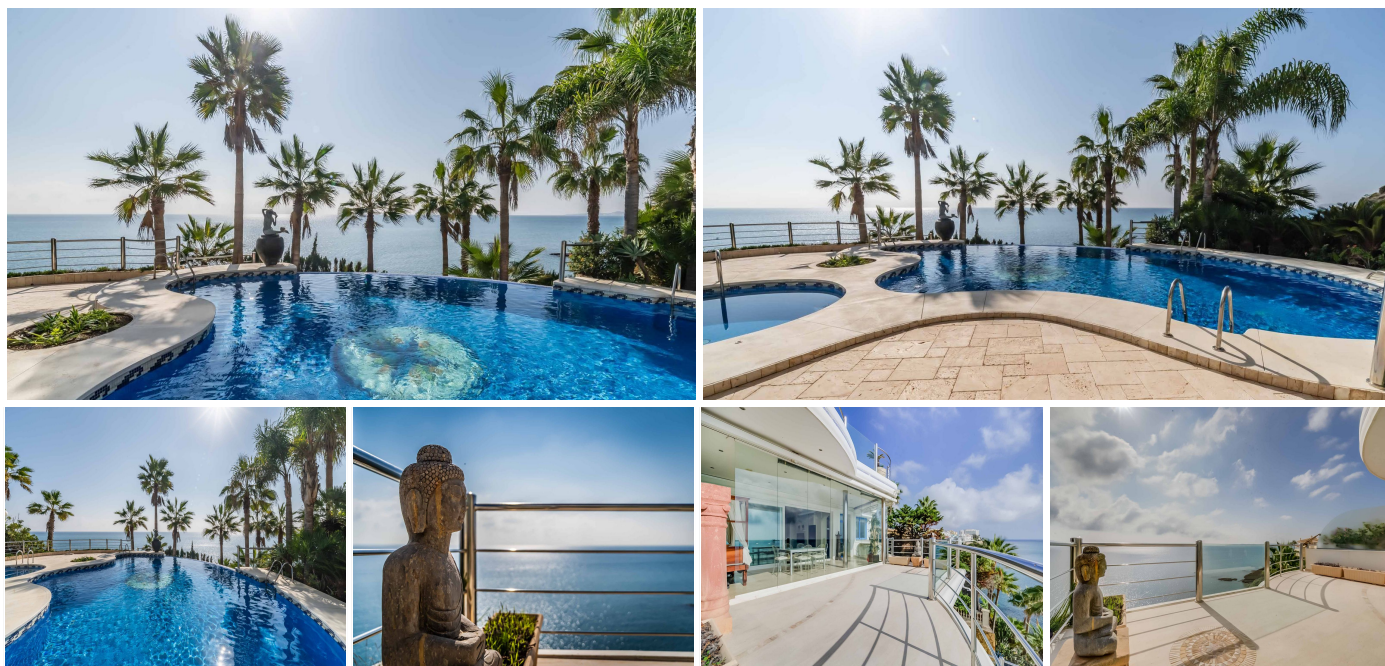


IDILIQ

ESTATES



R4894222

 Benalmadena Costa

REF# R4894222 2.395.000 €

BEDS

3

BATHS

3

BUILT

193 m²

TERRACE

38 m²

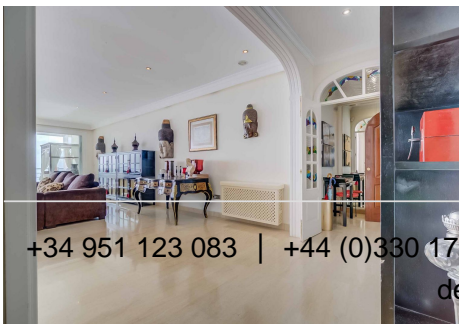
Middle Floor Apartment, Benalmadena Costa, Costa del Sol. 3 Bedrooms, 3 Bathrooms, Built 231m², Terrace 38 m². Setting : Beachfront, Beachside, Close To Golf, Close To Shops, Close To Sea, Close To Schools, Urbanisation, Front Line Beach Complex. Orientation : South. Condition : Excellent. Pool : Communal. Climate Control : Air Conditioning, Pre Installed A/C, Hot A/C, Cold A/C, Fireplace. Views : Sea, Beach, Panoramic, Garden, Pool. Features : Covered Terrace, Lift, Fitted Wardrobes, Near Transport, Private Terrace, WiFi, Storage Room, Utility Room, Ensuite Bathroom, Access for people with reduced mobility, Marble Flooring, Jacuzzi, Double Glazing, Domotics. Furniture : Fully Furnished. Kitchen : Fully Fitted. Unique investment opportunity - Discover Paradise on the Coastline! Step into a dream come true with this once-in-a-lifetime opportunity to own one of the most exclusive properties in Benalmádena Costa, nestled on the pristine first line of the beach. This exceptional residence offers 192m² of sophisticated living space, complemented by a 38m² terrace with breathtaking, uninterrupted views of the shimmering Mediterranean Sea and the enchanting Fuengirola Bay. Inside, you'll find three generously sized bedrooms and two beautifully designed bathrooms, with space for a private sauna to create your personal oasis. A guest toilet, a spacious living room, and an elegant kitchen - separated by a modern, see-through gas fireplace - providing a seamless blend of luxury and comfort. The chef's kitchen, fully equipped with

+34 951 123 083 | +44 (0)330 179 8687 | info@idiliqestates.com Local 28, Edificio D, Centro de Negocios Puerta de Banús, N-340, Km 175, 29660 Nueva Andalucía

IDILIQ

ESTATES

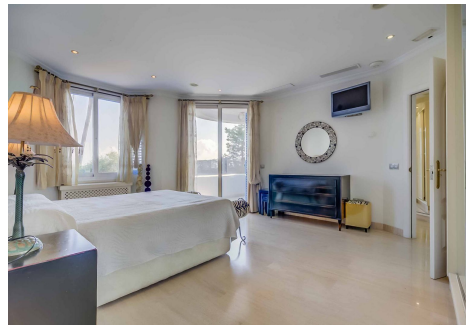
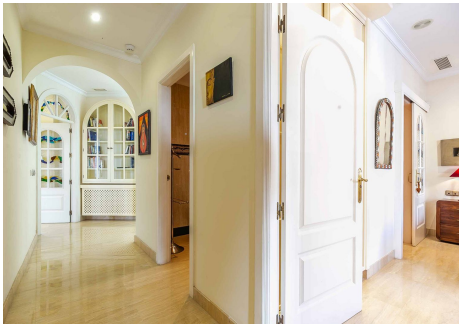
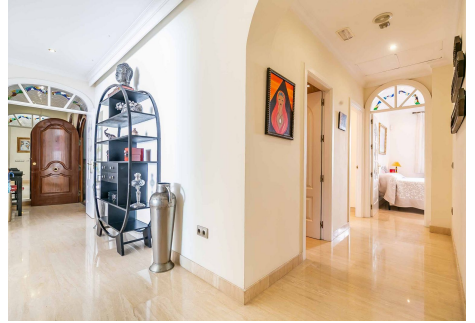
premium appliances, promises culinary inspiration at every turn. Enjoy the terrace year-round with sleek glass curtains framing the view. The largest terrace is your personal sanctuary, offering what may be the most stunning panoramic views on the coast while enjoying the indoor or outdoor jacuzzi in total privacy. This remarkable home is crafted with the finest materials and impeccable design, while the building itself offers premium amenities, including a community garden, sparkling pools, and private stairs leading directly to the beach. On the lower level you have 3 parkings, each of approx 30m² and a storage room of 7,7m². Even the building stands out as the elegant old style house with azure blue colors. This area is the upcoming part of Torrequebrada with new, high-end homes, gourmet restaurants (Yucas, Trocadero, Malibu beach club and more) and very close to supermarkets, shops, vets, pharmacy and more. Your dream lifestyle awaits - don't miss the chance to call this masterpiece your own!



+34 951 123 083 | +44 (0)330 179 8687 | info@idiligestates.com Local 28, Edificio D, Centro de Negocios Puerta de Banús, N-340, Km 175, 29660 Nueva Andalucía

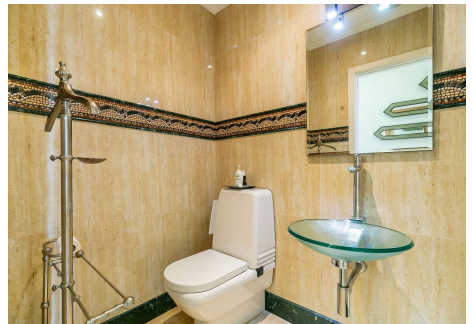
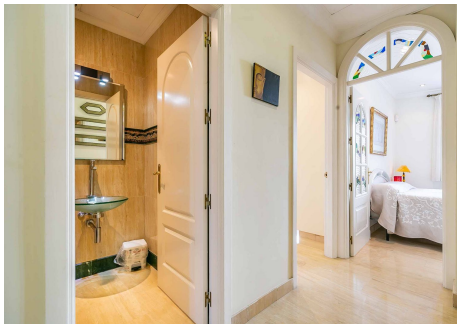
IDILIQ

ESTATES



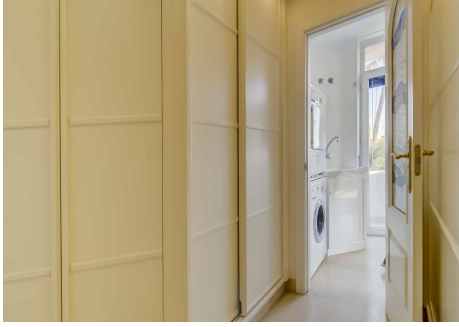
IDILIQ

ESTATES



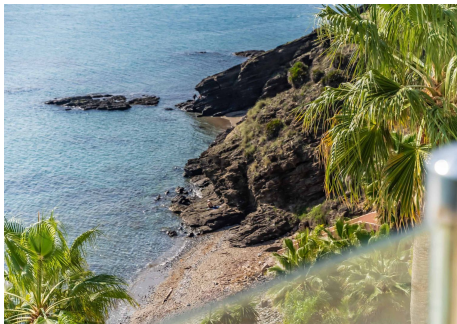
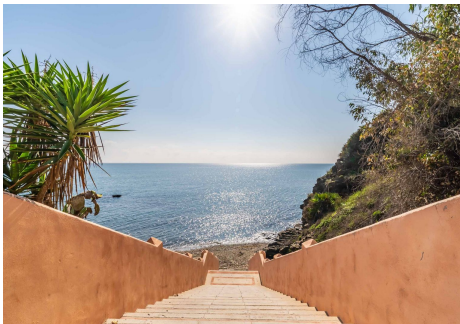
IDILIQ

ESTATES



IDILIQ

ESTATES



IDILIQ

ESTATES

