

IDILIQ

ESTATES



R4813855

📍 Manilva

REF# R4813855 215.000 €

BEDS

2

BATHS

2

BUILT

100 m²

TERRACE

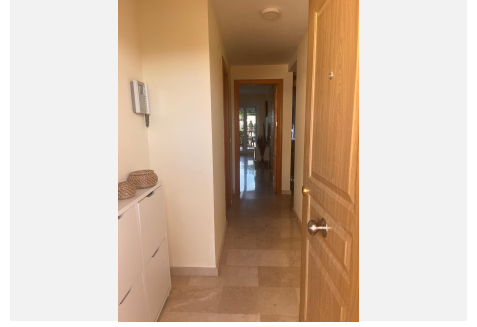
20 m²

Discover this extraordinary apartment located just 100 meters from the beach, in a community that offers a full range of amenities for a comfortable and active lifestyle. This property in perfect condition is the ideal choice for those looking for quality and convenience in one place. Apartment Features: Area: 2 bedrooms and 2 full bathrooms, providing ample space for families or couples. Equipped Kitchen: Modern and functional, ready to be used from day one. Large Terrace: 20 m² terrace with unbeatable views of the sea and the mountains, offering a perfect space to relax or entertain guests. Community Amenities: Sports and Recreation: 2 paddle tennis courts in good condition, community pool and children's play area. Services: Includes gardening and concierge, ensuring that the common spaces are always in perfect condition. Parking: It has an individual parking space included in the price. Other Features: South Facing: Enjoy direct views of the beach from the terrace and mountain views from the other end. Central Air Conditioning: System less than a year old, ensuring efficiency and comfort. Flexibility in Furnishing: Option to purchase the apartment furnished or unfurnished, according to your preferences. This apartment is not just a place to live, but a quiet retreat by the sea, ideal for both investors and those who want to enjoy a full and active life near the beach. For more information or to schedule a visit, do not hesitate to contact us. Your new home awaits you.

+34 951 123 083 | +44 (0)330 179 8687 | info@idiliqestates.com Local 28, Edificio D, Centro de Negocios Puerta de Banús, N-340, Km 175, 29660 Nueva Andlucia

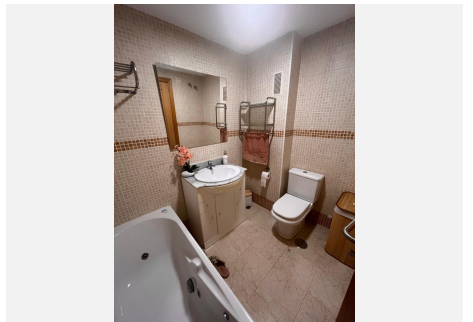
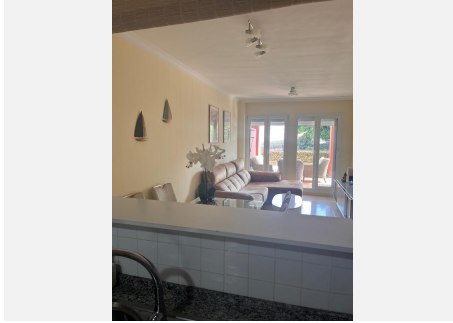
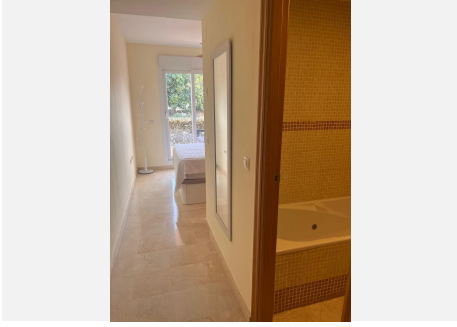
IDILIQ

ESTATES



IDILIQ

ESTATES



IDILIQ

ESTATES

