



R4771423

📍 Nueva Andalucía

REF# R4771423 2.295.000 €

BEDS

3

BATHS

3

BUILT

204 m²

TERRACE

102 m²

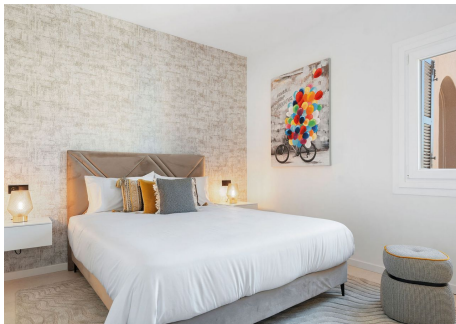
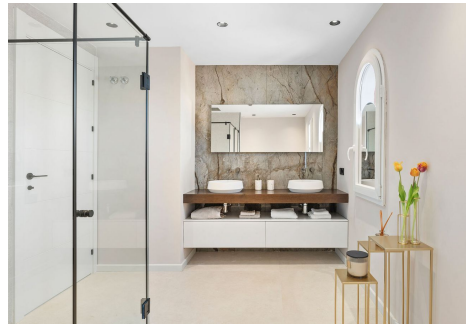
Welcome to this Penthouse, a luxurious duplex that seamlessly blends Andalusian charm with modern elegance. This stunning property is located in the urbanisation Los Belvederes in Nueva Andalucía. Offering a spacious living area of 306 m² whereby 102 m² is terrace space, this penthouse provides ample room for both relaxation and entertainment. As you enter the first floor, you are greeted by the beautifully designed social areas, including a modern kitchen equipped with SIEMENS appliances and panoramic sea views. The dining and lounge areas flow effortlessly onto a covered terrace and an open terrace, both boasting spectacular vistas. Ascending to the second floor, you'll find three generously sized bedrooms, each with its own en-suite bathroom. The master bedroom is particularly noteworthy, featuring a large terrace facing southwest, where you can enjoy breathtaking views of the sea, Gibraltar, and the Atlas Mountains in Morocco. The property, originally built in 1988 and fully renovated in 2023, showcases a very modern Scandinavian style with premium quality materials and designer furnishings. The outdoor spaces are equally impressive, with two expansive terraces. The main level terrace is partially covered, offering both sheltered and open areas, while the first-floor terrace includes a sunbathing area and a jacuzzi, perfect for soaking in the sun and the views. Residents of Penthouse Mira will also benefit from communal swimming pool access, a dedicated parking space in the garage, and an additional storage room. The property is fully furnished with

+34 951 123 083 | +44 (0)330 179 8687 | info@idiliqestates.com Local 28, Edificio D, Centro de Negocios Puerta de Banús, N-340, Km 175, 29660 Nueva Andalucía

IDILIQ

ESTATES

stylish Scandinavian decor, ensuring a move-in ready experience. Enhanced security features, including an alarm system, provide peace of mind. Located just a 5-minute drive from shops, a 10-minute drive from schools, and the beach, Penthouse Mira offers both convenience and exclusivity. With its frontal south-facing sea views and extensive outdoor areas, this penthouse is a true gem in the heart of Nueva Andalucia. Don't miss the opportunity to own this exquisite property that combines modern luxury with Andalusian charm.



IDILIQ

ESTATES

