

IDILIQ

ESTATES



R4750036

📍 Benahavís

REF# R4750036 2.500.000 €

BEDS

4

BATHS

3.5

BUILT

187 m²

TERRACE

163 m²

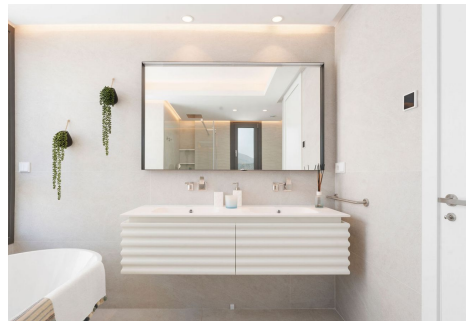
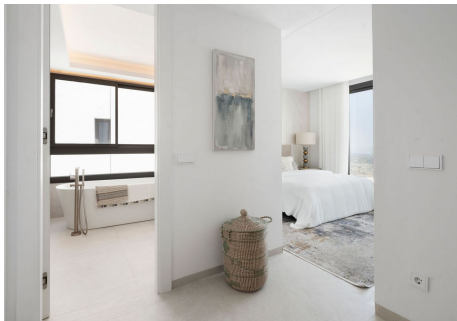
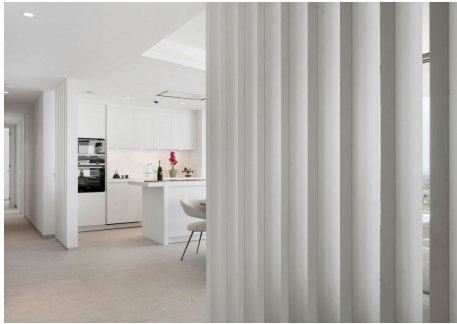
Penthouse Skyline is located within the prestigious Real de la Quinta Residential Country Club Resort in Benahavís. This unique Penthouse is perfectly aligned with a south-facing orientation. It has great panoramic views of the lake, La Concha - mountain, golf course, town, and sea, encapsulated in 187 sqm of living space with a sprawling 163 sqm terrace. Designed with sophistication in mind, this penthouse features four spacious bedrooms (all on one floor), three bathrooms, and a guest toilet across a single floor for seamless access. The interior is outfitted with Siemens appliances and crafted with premium materials. The expansive terrace hosts a private pool and generous space for relaxation and entertainment, complemented by a communal garden and pool. Security is paramount in this gated community, which also offers three big parking spaces and a private storage room. Fully furnished in a modern style, Penthouse Skyline is a testament to elegant living in a serene environment, only minutes away from local shops, schools, and the beach. This newly constructed penthouse is part of the exclusive Real de la Quinta community, soon to be enhanced by the El Lago Club—a luxurious facility set to feature a massive 35,000 m² lake and beach area. The club will offer a variety of non-motorized water sports including kayaking, SUP, and water biking. Spanning over 400 meters at its longest point, the lake will anchor a range of activities managed from a central reception that coordinates sports like golf, tennis, and padel. Additionally, El Lago Club will include a

+34 951 123 083 | +44 (0)330 179 8687 | info@idiliqestates.com Local 28, Edificio D, Centro de Negocios Puerta de Banús, N-340, Km 175, 29660 Nueva Andalucía

IDILIQ

ESTATES

wellness center with a fully equipped gym, sauna, massage areas, and a 20-meter heated pool. A restaurant and bar, along with private event spaces boasting stunning lake views, will further enhance the living experience.



IDILIQ

ESTATES

