




## HOUSE 5 BEDROOMS 6.5 BATHROOMS IN SAN PEDRO DE ALCÁNTARA

 San Pedro de Alcántara

REF# R5020702    2.950.000 €

BEDS	BATHS	BUILT	PLOT	TERRACE
5	6.5	450 m <sup>2</sup>	610 m <sup>2</sup>	220 m <sup>2</sup>

This is a newly built luxury villa located beachside San Pedro de Alcántara, Marbella, near the beach and San Pedro's scenic promenade. It's perfect for those who want both coastal living and city amenities. Golf lovers will enjoy its proximity to Golf Valley, and Puerto Banus, famous for its upscale shops and restaurants, is just a short drive away. The historic Marbella, with its charming old town and lively beach areas, is also easily reachable. The villa is conveniently close to supermarkets, hospitals, and schools.

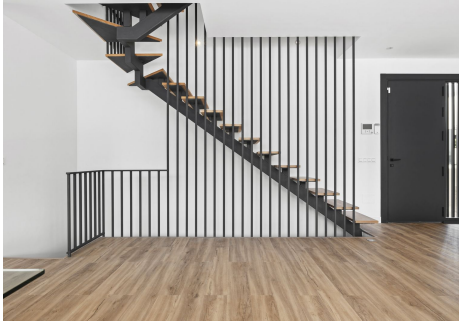
Spanning 450 square meters on a 610 square meter plot, the villa has five bedrooms and 5.5 bathrooms, providing plenty of space for family and guests. The main floor includes a spacious living and dining area with an open-plan kitchen equipped with Bosch appliances. There's also a guest bedroom with an en-suite bathroom, access to terraces, and a private pool. The first floor has the main bedroom with an en-suite bathroom and dressing area, another guest bedroom with its own en-suite, and private terraces with great views. The villa also has a roof terrace. The lower floor features a separate apartment with a kitchen, guest bedroom, and entertainment area or gym. Parking for two cars is available.

+34 951 123 083 | +44 (0)330 179 8687 | [info@idiliqestates.com](mailto:info@idiliqestates.com)    Local 28, Edificio D, Centro de Negocios Puerta de Banús, N-340, Km 175, 29660 Nueva Andalucía

# IDILIQ

## ESTATES

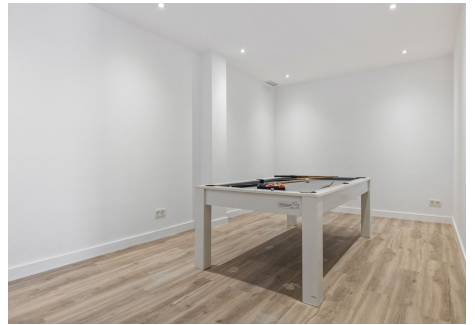
San Pedro de Alcántara is known for its beautiful beaches and good infrastructure, making travel easy. It has a variety of shops and reputable schools nearby, as well as excellent healthcare facilities. Located in San Pedro de Alcántara offers easy access to leisure, shopping, education, and healthcare amenities, making it an ideal choice for residents.





# IDILIQ

ESTATES



# IDILIQ

ESTATES

