

IDILIQ

ESTATES



R4972651

 Nueva Andalucía

REF# R4972651 4.400.000 €

BEDS

7

BATHS

6.5

BUILT

455 m²

PLOT

1117 m²

TERRACE

200 m²

Stunning villa situated in the Golf Valley of Nueva Andalucía, just a short drive to Puerto Banus and surrounding beaches.

Spread across three floors, this luxurious property offers breathtaking views of both the La Concha mountain and the Mediterranean sea. As you enter, you'll be greeted by a grand entrance leading to a spacious living room overlooking the terrace and the pool area. The fully equipped kitchen, complete with dining space for 16 people, boasts modern amenities including multiple refrigerators, a wine cooler, and an ice cube machine. Directly adjacent to the kitchen is a convenient scullery and laundry room equipped with a washing machine and tumble dryer.

Step outside onto the terrace to discover a large heated infinity pool, a 5-person Jacuzzi, and an impressive barbecue area perfect for outdoor entertaining. On the second floor, you'll find another leisure area with a partially covered bar and a generous lounge space. For the ultimate relaxation, head up to the top terrace where you'll find an 8-person luxury Jacuzzi offering panoramic views of the entire valley.

+34 951 123 083 | +44 (0)330 179 8687 | info@idiliqestates.com Local 28, Edificio D, Centro de Negocios Puerta de Banús, N-340, Km 175, 29660 Nueva Andlaucia

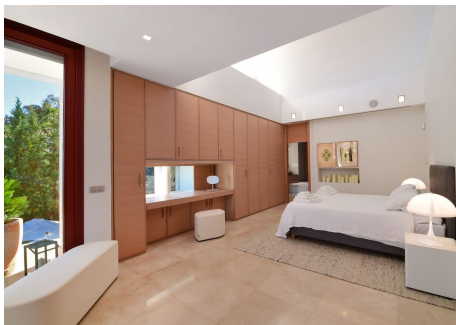
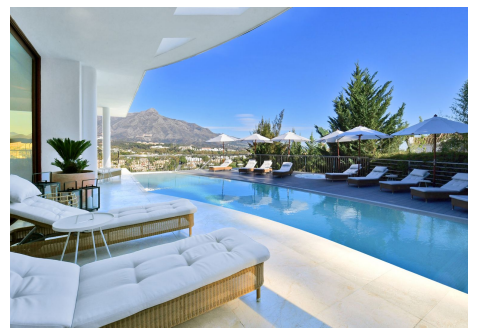
IDILIQ

ESTATES

The villa boasts a total of 7 bedrooms and 6 bathrooms, plus an additional guest toilet. On the first floor, two master bedrooms feature access to the bar and lounge area, each with a king-size bed and an en-suite bathroom. The ground floor offers two bedrooms with en-suite bathrooms, one bedroom with en-suite bathroom, and two bedrooms sharing a bathroom. Some of the bedrooms also offer direct access to the terrace and pool area.

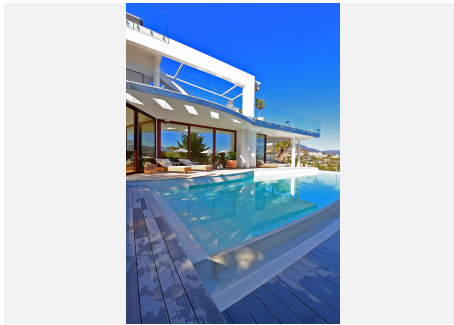
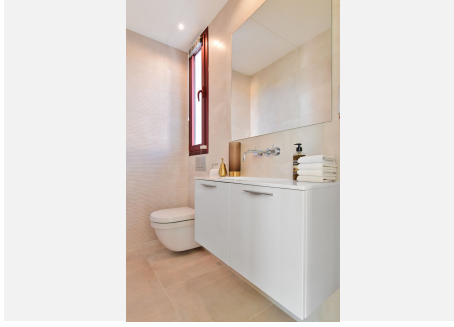
Entertainment options abound, with a cinema/game room equipped with a pool table and an outdoor gym located on the ground floor. Parking is a breeze with space for up to 4 cars at the main entrance.

Property has LPO and Rental License!



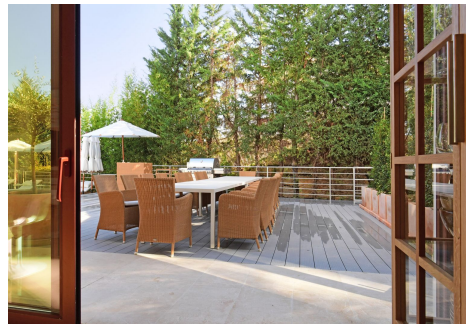
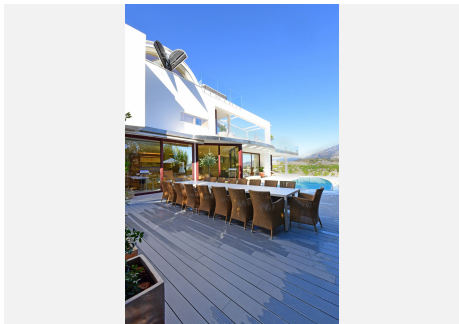
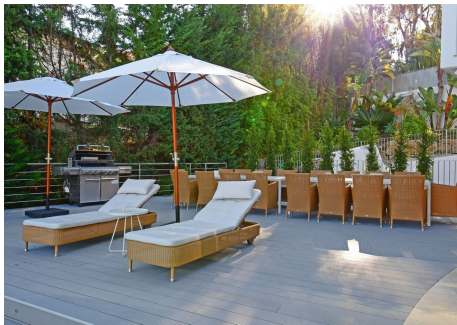
IDILIQ

ESTATES



IDILIQ

ESTATES



IDILIQ

ESTATES

