



HOUSE 4 BEDROOMS 3 BATHROOMS IN ALHAURÍN EL GRANDE

 Alhaurín el Grande

REF# R4900576 895.000 €

BEDS

4

BATHS

3

BUILT

300 m²

PLOT

1000 m²

TERRACE

300 m²

Looking for a place to build your dream home with spectacular views or to make a smart investment in a privileged environment?

This plot of 905 m² located in the prestigious urbanization Sierra Gorda, in Alhaurín el Grande, is a unique opportunity.

With a buildability of 25%, you can design a detached house with all the amenities and space you need.

Surface: 1.200 m², an ideal size that combines space and manageability.

Buildability: Up to 25%, perfect for building a custom-designed home, with space for gardens, swimming pool, and leisure areas.

Natural environment: Surrounded by mountains and nature, the urbanization enjoys spectacular views and a pleasant climate all year round.

Sierra Gorda is one of the most valued urbanizations in Alhaurín el Grande. It is known for its perfect balance between tranquility and proximity to services.

Just a few minutes from the center of Alhaurín el Grande, you will have access to supermarkets, schools, medical centers and a wide range of leisure activities.

First residence: Many families choose Sierra Gorda to live in because of its family and safe environment. In addition, its strategic location connects you quickly to Malaga, Marbella and the international airport, ideal for those who need to move for work or enjoy frequent getaways.

Smart investment: This development has shown steady growth in value thanks to demand from both local residents and foreigners seeking quality of life on the Costa del Sol.

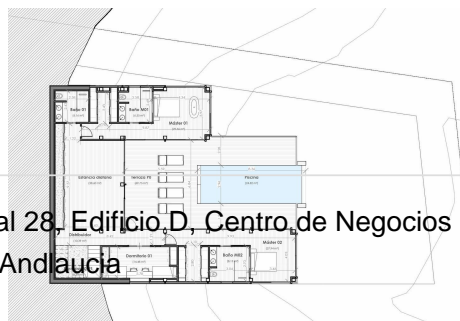
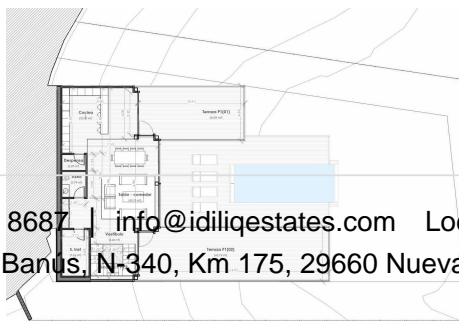
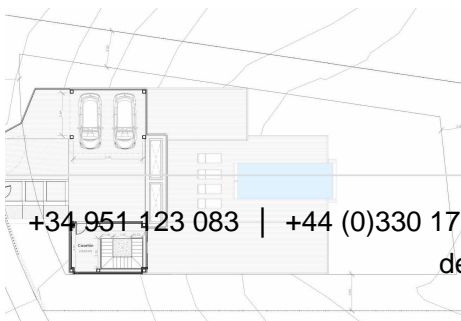
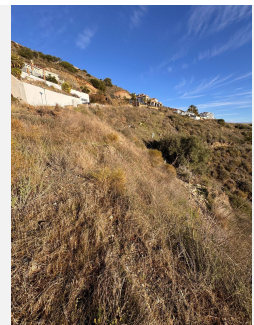
Added benefits:

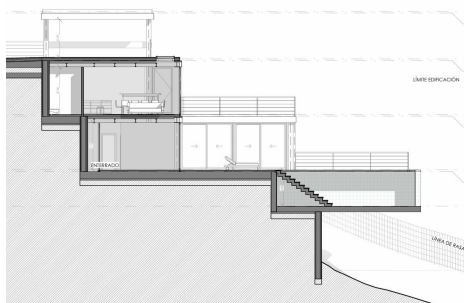
Quick access: Excellent connections via major roads such as the A-404 and AP-7 motorways.

Quality of life: Fresh air, natural landscapes and an environment that invites relaxation.

This plot represents a unique combination of prime location, bespoke design possibilities and long-term value. Can you imagine living or investing here?

Contact us for more information, enquire about other available plots and discover why Sierra Gorda is the perfect place for you.





Sierra Gorda: Vanguardia y naturaleza en el Valle del Guadalhorce

Parcela de 854 m²
 Lugar privilegiado, privilegiada ubicación Sierra Gorda, vista al valle.

213 m² de construcción
 Diseño arquitectónico optimizado para la integración al entorno.

Ubicación Privilegiada:
 Situado en el Puerto de Gorda, corazón del Valle del Guadalhorce.

Planta de Ac (Superior)
 Primer piso: 21,04 m² con garaje de entrada.

Planta Prima (Zona Social)
 Salón-comedor, con posibilidad de terraza exterior: 23,79 m² de superficie.

Planta Baja (Zona Privada)
 24,82 m² de superficie.

Piscina Infinita "Volada"
 Situación que permite fundirse con el entorno.

Integración Paisajística
 Grandes ventanales y extractores integrados en el exterior con el entorno.

Acabados de Alto Nivel
 Tres baños de clase, cocina equipada, muebles de calidad.