



R4884397

📍 Benalmadena

REF# R4884397 750.000 €

BEDS

5

BATHS

3

BUILT

320 m²

PLOT

790 m²

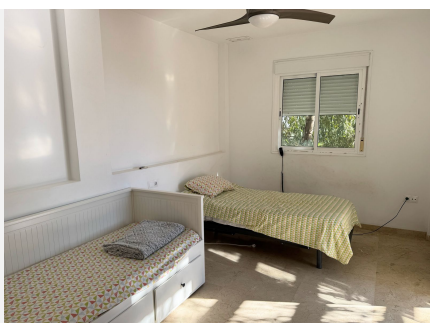
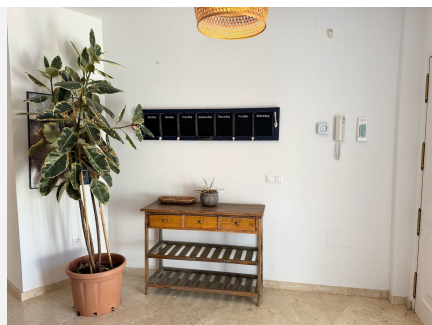
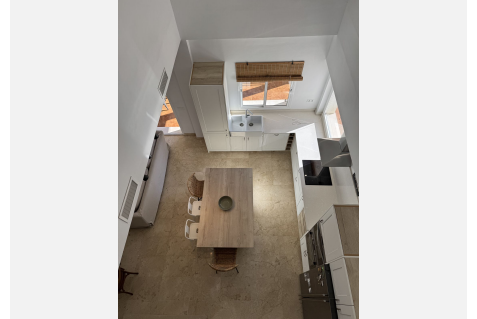
This two-story villa spans 320 m², situated on a 790 m² plot, and offers five bedrooms, a spacious living room, a kitchen-dining area, and a garage. Upper Floor Entry to the villa is on the upper floor, where an expansive outdoor area doubles as a porch for seating or as private parking. Inside, the entryway is open and inviting, featuring a four-door built-in wardrobe ideal for coats and shoes. This floor has three bedrooms and two bathrooms. The master suite includes an en-suite bathroom and a terrace with stunning sea views, while all bedrooms benefit from central air conditioning. Marble flooring adds a touch of elegance to the entire upper level. The upper floor also includes a spacious garage with parking for one car, along with extra space for bicycles, sports equipment, and storage. The garage is complete with a laundry room equipped for a washer, dryer, and additional shelving. Ground Floor On the ground floor, you'll find a generous kitchen-dining area, a cozy living room, two bedrooms, and a bathroom. The kitchen is fitted with high-quality Schmidt cabinetry and an island that seats up to five. A fireplace adds warmth to the dining area, which, like all ground-floor rooms, opens to the garden. The ground level, updated in 2021, includes wood flooring in the newly expanded living room area. This floor also features a large front porch overlooking the garden and a rear section with a secondary porch and a play area for children. Additionally, there is a 30 m² storage room that is prepped for conversion into an extra room with a bathroom, as plumbing is already installed.

+34 951 123 083 | +44 (0)330 179 8687 | info@idiliqestates.com Local 28, Edificio D, Centro de Negocios Puerta de Banús, N-340, Km 175, 29660 Nueva Andlucia

IDILIQ

ESTATES

Central air conditioning is also available throughout this level.



IDILIQ

ESTATES



IDILIQ

ESTATES

