



## TOWNHOUSE 3 BEDROOMS 3 BATHROOMS IN TORREQUEBRADA

 Torrequebrada

REF# R5139070 459.000 €

BEDS

3

BATHS

3

BUILT

170 m<sup>2</sup>

TERRACE

60 m<sup>2</sup>

Property with potential value, Benalmádena.

This semi-detached house is the strategic investment you are looking for. Its unbeatable location opposite the Torrequebrada International School, spectacular sea views and the possibility of optimising its design make it a unique opportunity in the area.

### Location and surroundings

Located in a high-value area, within walking distance of schools, supermarkets, the beach and the casino. The panoramic sea views from the terraces and bedrooms are guaranteed and cannot be blocked. With a south-facing aspect, the property enjoys exceptional light throughout the day.

### Layout and Space

With approximately 170 m<sup>2</sup>, the property is distributed over two floors plus a basement. On the main floor

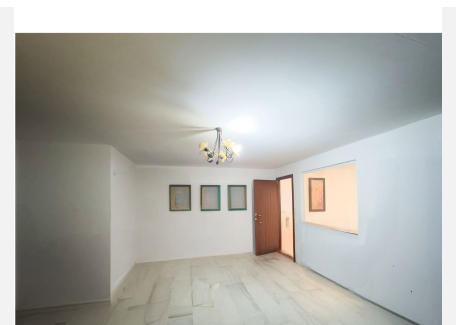
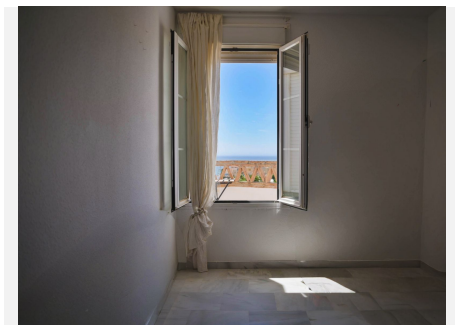
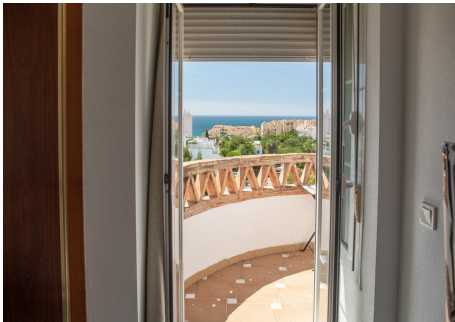
there is a spacious living room with access to the terrace and a kitchen with a serving hatch. The layout of these spaces allows for easy updating to achieve an open-plan design, maximising light and views.

On the upper floor, the sleeping area has three bedrooms. The master bedroom includes an en-suite bathroom and a terrace with sea views. In addition, there is another full bathroom shared between the other bedrooms.

### Opportunity for Optimisation

The 80 m<sup>2</sup> basement is a key asset. With a toilet already installed and the possibility of direct access from the outside, it is ideal for a separate workspace, gym or even to generate additional income. The investment for these improvements is low in relation to the value they add.

In summary, this is a property with a privileged location and high potential to increase its value with minimal investment. If you are interested in the value equation it offers, please contact us.





# IDILIQ

ESTATES

