



R5064211

📍 Puerto Banús

REF# R5064211    2.950.000 €

BEDS

3

BATHS

3

BUILT

305 m<sup>2</sup>

TERRACE

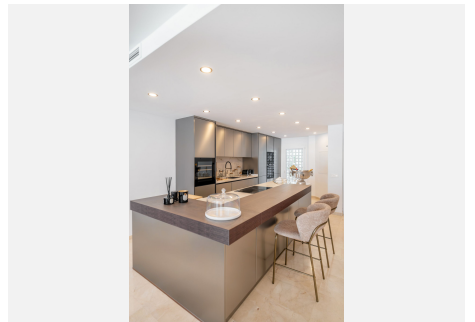
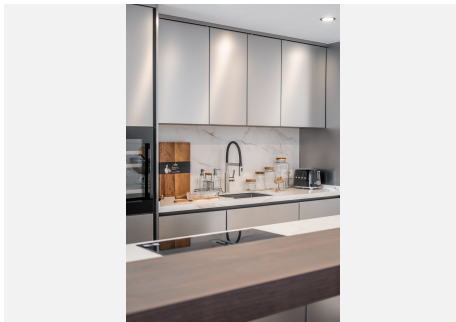
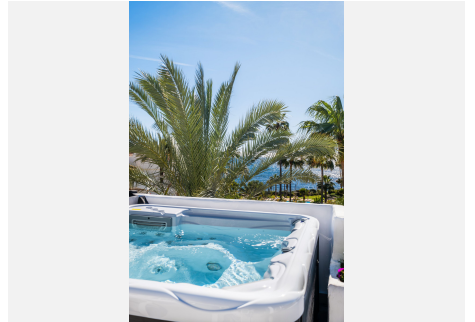
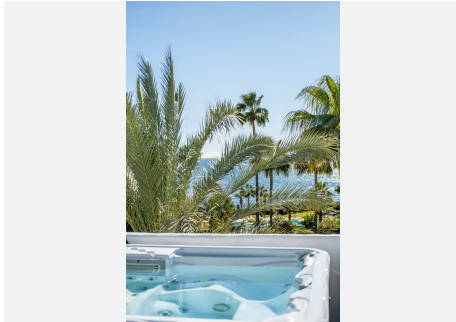
97 m<sup>2</sup>

Located in Ventura del Mar, one of Marbella's most prestigious and best-located beachfront developments just a short stroll from Puerto Banús, this exclusive south-facing duplex penthouse offers breathtaking frontal sea views and direct access to the beach and promenade. The property features three spacious bedrooms, including a master suite upstairs with a large en-suite bathroom, walk-in dressing room, and direct access to two private terraces—one with a barbecue, sunbathing area, and luxury jacuzzi overlooking the tropical gardens and sea, and the other with views of La Concha mountain. On the main floor, two king-size bedrooms (one en-suite) open onto a south-facing terrace with panoramic views. The penthouse is finished to the highest standards with marble flooring, floor heating, and air conditioning throughout. The fully equipped luxury kitchen with island opens to a large, bright living area and terrace with open views of the sea and lush gardens. The gated resort offers 24-hour security, beautifully landscaped tropical gardens with streams and ponds, a large communal pool, gym with sauna and steam room, games and lounge area, and workspace. Additional features include fiber optic internet, 75" smart TVs, and all luxury furniture included. Designed by the renowned architect Melvin, the complex combines architectural elegance with a commitment to environmental responsibility.



# IDILIQ

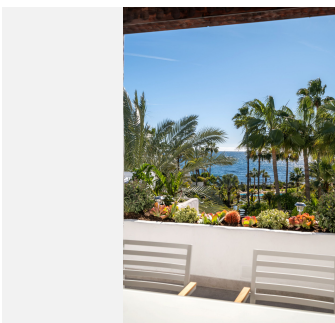
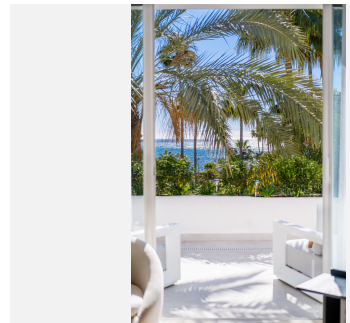
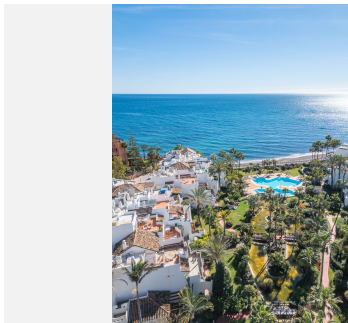
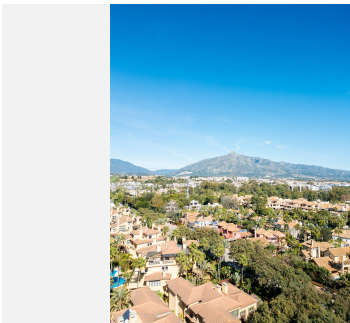
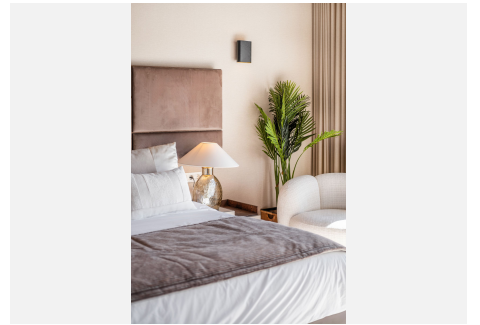
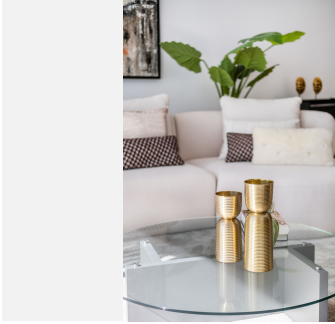
ESTATES





# IDILIQ

ESTATES



# IDILIQ

ESTATES

