

# IDILIQ

ESTATES



R5005204

📍 Coín

REF# R5005204 469.000 €

BEDS

3

BATHS

4

BUILT

177 m<sup>2</sup>

PLOT

13582 m<sup>2</sup>

TERRACE

32 m<sup>2</sup>

A beautiful country house offering incredible views to the valley and mountains, plus it is only a few minutes' drive to the villages of Coín and Alhaurín El Grande, as well as being less than 20 minutes to Málaga and the airport.

This wonderful property offers 2 separate houses, both finished to a quality rustic style, with a shared swimming pool and terrace from where you can enjoy the views.

The ground floor of the main house benefits from a living room, spacious kitchen with utility room, and guest shower room. On the top floor are 2 spacious bedrooms both with fitted wardrobes and ensuite bathrooms. Attached to the main property is a large, covered terrace, which is great for dining and relaxing.

The separate guest apartment has a lovely open plan living room with kitchen, bedroom, and shower room.

The area around both properties offers numerous areas to relax and enjoy the incredible scenery. All the land is usable, is gently sloping, and is planted with mostly olive trees.

+34 951 123 083 | +44 (0)330 179 8687 | [info@idiliqestates.com](mailto:info@idiliqestates.com) Local 28, Edificio D, Centro de Negocios Puerta de Banús, N-340, Km 175, 29660 Nueva Andalucía

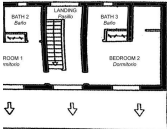
# IDILIQ

ESTATES

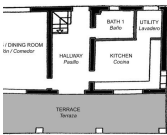


# IDILIQ

ESTATES



GROUND FLOOR  
*Planta Baja*



TOP FLOOR  
*Planta Alta*



GUEST HOUSE  
*Casa de Invitados*

This is a representation of the layout of the property and it is not to scale.  
*Este es una representación de la distribución de la propiedad y no está a escala.*