



R4655803

 Mijas

REF# R4655803 1.800.000 €

BEDS

4

BATHS

3

BUILT

385 m²

PLOT

10000 m²

Immerse yourself in the captivating charm of this refined utterly peaceful country home, affording absolute privacy and breathtaking panoramic views, which unfold before you as far as the sea and the Sierra de Ronda. The beach, several golf courses, riding stables and extensive shopping facilities are only a 10-minute drive away. Embrace the timeless elegance of this Cortijo style country house, evident in the spacious rooms bathed in natural light and filled with a sense of effortless sophistication. Gather loved ones around the crackling fireplace in the expansive classic 'salon' or prepare culinary masterpieces in the spacious kitchen with inside and outside dining areas perfect for intimate meals and grand celebrations. Host formal dinners in the dedicated gracious dining room, ensuring every occasion feels special. Retire to one of the luxurious en-suite bedrooms, offering a private sanctuary after a day of golf, swimming, tennis or horse riding. Need a dedicated space to work remotely? The separate office provides the perfect environment for focused productivity connected to the Internet via Starlink (satellite) with speeds above 30mbps. Alternatively, it could double up as a fifth bedroom. For friends and family that come to visit, the guest annex, complete with its own living room, spacious "Mama Mia" dining terrace, kitchen, two double bedrooms, and a bathroom plus shower, provides comfortable independent accommodation, which can be instantly incorporated as part of the main house. Step outside and discover your own personal oasis. Lush

+34 951 123 083 | +44 (0)330 179 8687 | info@idiliqestates.com Local 28, Edificio D, Centro de Negocios Puerta de Banús, N-340, Km 175, 29660 Nueva Andlucia

IDILIQ

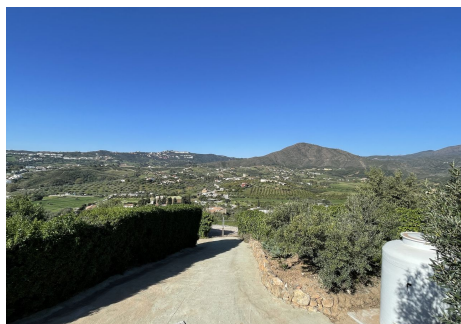
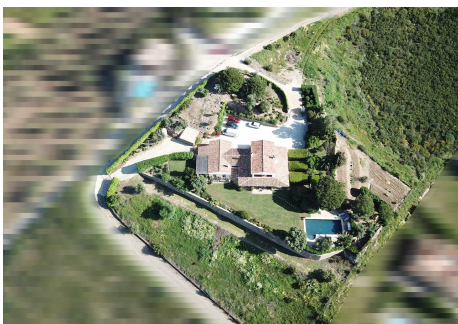
ESTATES

green lawns invite relaxation or even a round of croquet, while the sparkling swimming pool beckons refreshing dips under the warm Spanish sun. Covered outdoor dining areas provide the perfect setting for al fresco meals, allowing you to embrace the beauty of the surrounding landscape. Built on an expansive plot of 10.000m², which could cater for equestrian enthusiasts, offering endless possibilities for creating your own personal haven. This is more than just a house; it's a lifestyle. A chance to own a piece of paradise, experience the beauty of Spain, and create lasting memories with loved ones in a haven of comfort, sophistication, and endless possibilities.



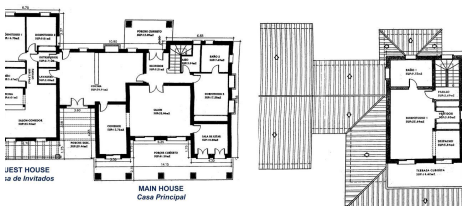
IDILIQ

ESTATES



GROUND FLOOR
Planta Baja

TOP FLOOR
Planta Alta



This is a representation of the layout of the property and it is not to scale.
Esta es una representación de la distribución de la propiedad y no está a escala.