



R4834537

📍 Benalmadena

REF# R4834537 290.000 €

BEDS

2

BATHS

2

BUILT

89 m<sup>2</sup>

TERRACE

15 m<sup>2</sup>

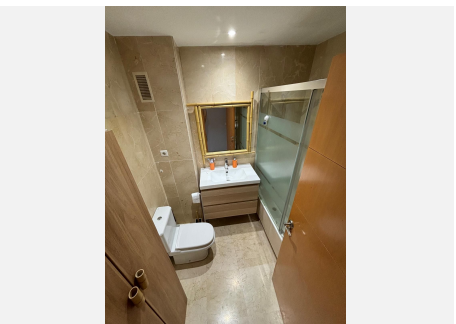
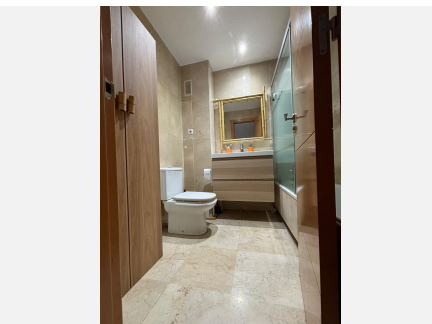
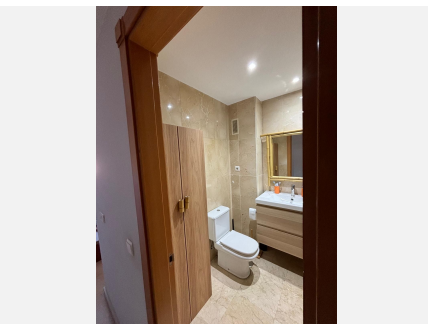
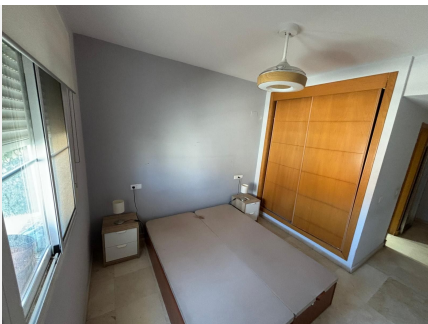
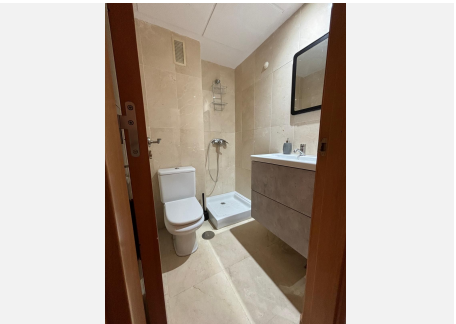
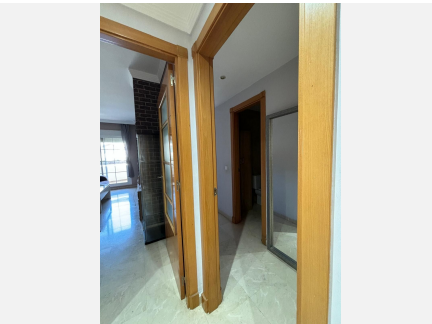
We present this jewel of an apartment. It is a penthouse in a prestigious urbanization. The property consists of an entrance hall, 2 double bedrooms with fitted wardrobes, two bathrooms (one en suite), an independent equipped and furnished kitchen, a spacious living-dining room with access to a beautiful terrace with a covered part and an open part with beautiful open views of the golf course and the mountains, where you can enjoy good times outdoors, the terrace has water and electricity connections. Also included in the price are two parking spaces and a storage room. The urbanization is located in a privileged enclave, it is a closed and protected enclosure with surveillance at night, built between golf courses, lakes with ducks and thousands of meters of green areas. It has practice golf courses, tennis courts, paddle tennis courts, a social club with a gym, etc. In the vicinity of the urbanization we have a private hospital, a public hospital, two schools, a Carrefour supermarket, and a Mercadona and a Lidl nearby. In addition to being 5 minutes by car from the beach, 5 minutes from Benalmádena town, 15 minutes from the airport and 20 minutes from Malaga or Marbella. We inform you that our agency fees are already included in the sale price, so you do not have to pay any type of expense for real estate management or advice. And that in compliance with Decree of the Andalusian Regional Government 218/2005 of October 11, it is reported that notary, registration, ITP and other expenses inherent to the sale are not included in the price. The information

+34 951 123 083 | +44 (0)330 179 8687 | info@idiliqestates.com Local 28, Edificio D, Centro de Negocios Puerta de Banús, N-340, Km 175, 29660 Nueva Andlucia

# IDILIQ

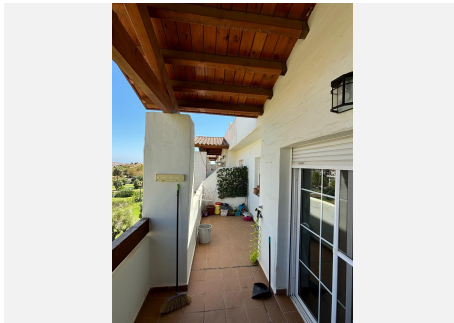
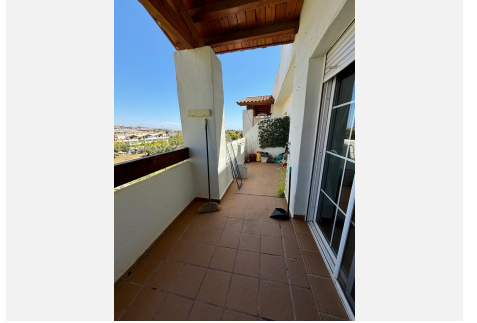
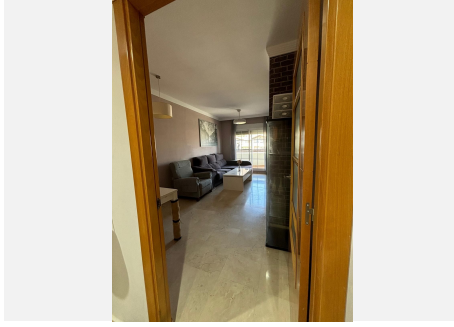
ESTATES

provided is indicative, is not binding and has no contractual value. The offer is subject to errors, price changes, availability and/or withdrawal from the market without prior notice. Such information may have undergone modifications that have not yet been incorporated. We suggest you contact the company to obtain the latest data and/or confirm the data shown here.



# IDILIQ

ESTATES



# IDILIQ

ESTATES

