



R4762036

📍 Benalmadena

REF# R4762036 307.500 €

BEDS

2

BATHS

2

BUILT

140 m<sup>2</sup>

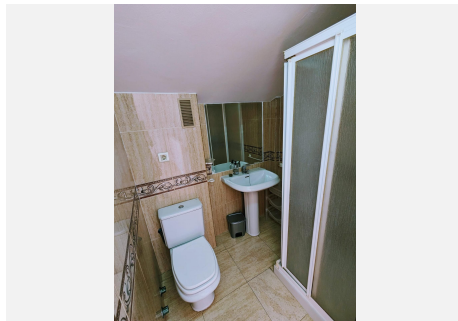
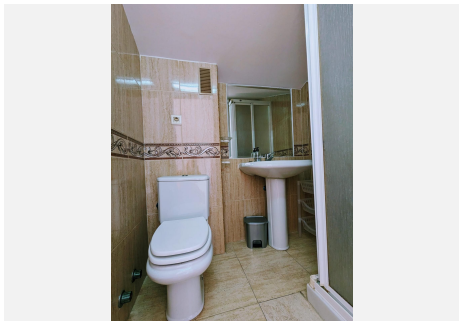
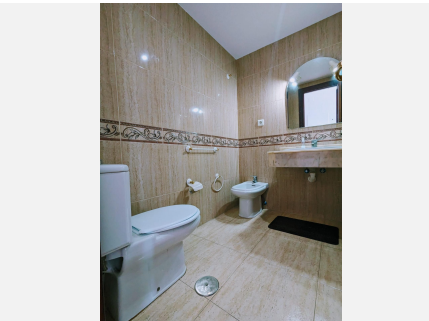
Fantastic and exclusive duplex penthouse in Torremuelle! We present this sought-after property as a duplex penthouse just 50 meters from the beach! It consists on the ground floor of a living-dining room with an American kitchen and a glazed terrace incorporated into the living room, a huge bedroom with a built-in wardrobe and a complete bathroom with a bathtub. On the first floor we have another huge bedroom with a built-in wardrobe, another complete bathroom with a shower and access to the jewel in the crown, an impressive solarium with 360° views of both the sea in front of us and the mountains, knowing that we will never lose these views. The community has a communal swimming pool, barbecue area and communal parking. We also have restaurants and a grocery store at the very door of the building. The apartment is located 50 meters from the beach, 50 meters from a hotel and 300 meters from the train station, which makes it a magnificent opportunity both as a home and as an investment due to its high profitability. Do not hesitate to come and visit it before it flies! We inform you that our agency fees are already included in the sale price, so you do not have to pay any type of expense for management or real estate advice. And that in compliance with the Decree of the Andalusian Regional Government 218/2005 of October 11, it is reported that notary, registration, ITP and other expenses inherent to the sale are not included in the price. The information provided is indicative, has no binding nature and lacks contractual value. The offer is subject to

+34 951 123 083 | +44 (0)330 179 8687 | info@idiliqestates.com Local 28, Edificio D, Centro de Negocios Puerta de Banús, N-340, Km 175, 29660 Nueva Andlucia

# IDILIQ

ESTATES

errors, price changes, availability and/or withdrawal from the market without prior notice. Such information may have undergone modifications that have not yet been incorporated. We suggest you contact the company to obtain the latest data and/or confirm the data shown here.



# IDILIQ

ESTATES

