



R5368801

 Benalmadena Pueblo

REF# R5368801 549.000 €

BEDS

3

BATHS

2

BUILT

111 m²

TERRACE

9 m²

FULLY RENOVATED CORNER APARTMENT with SEA VIEWS in Benalmádena Pueblo

Discover this fantastic corner property, completely refurbished using top-quality materials and featuring a modern, functional design, ready to move into. Located in one of the most sought-after areas of Benalmádena Pueblo, it perfectly combines tranquillity, comfort, and proximity to all amenities.

Prime location

Just 500 metres from the village centre, with bars, restaurants and shops only a short walk away. In addition, a fully equipped sports centre with gym, swimming pool and football pitches is just 200 metres away.

Outdoor spaces to enjoy

The property boasts a pleasant main terrace of 9 m², south-east facing, offering views of the sea and mountains. There is also a second covered terrace (8 m²), accessed from one of the bedrooms, currently used as a leisure area.

+34 951 123 083 | +44 (0)330 179 8687 | info@idiliqestates.com Local 28, Edificio D, Centro de Negocios Puerta de Banús, N-340, Km 175, 29660 Nueva Andalucía

Quality and comfort

Fully refurbished, the apartment offers:

- Ducted air conditioning throughout
- Fitted wardrobes
- Excellent layout and natural light
- Modern design
- Open-plan kitchen with island
- En-suite bathroom

INCLUDES PRIVATE GARAGE

Underground garage included in the price.

Communal areas

The residential complex features a communal swimming pool and well-maintained gardens, ideal for relaxing and enjoying the Costa del Sol's climate.

Layout

Entrance hall, bathroom, kitchen and a spacious living-dining room with access to the main terrace. From the living room, a hallway leads to bedroom 2, bedroom 3 with a private terrace and the master bedroom with en-suite bathroom.

Key details

Built size: 111 m²

Terraces: 9 m² + 8 m²

Floor: 1st (building with only 2 floors)

Orientation: South-east

Year of construction: 2004

Rubbish tax: €172/year

Distances

-School: 20 m

-Restaurants and bars: 100 m

-Bus stop: 200 m

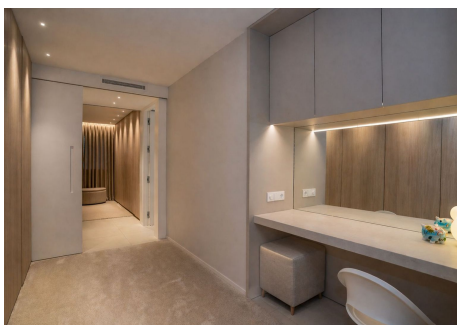
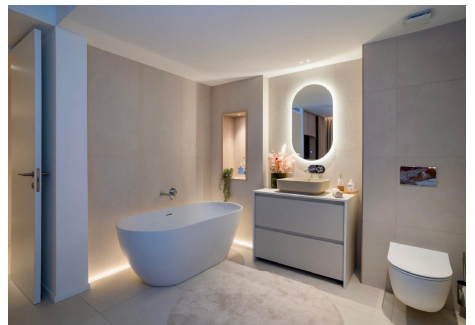
-Sports centre: 200 m

-Benalmádena Pueblo centre: 500 m

-Airport: 15.2 km

IDILIQ

ESTATES



IDILIQ

ESTATES

