



R4688410

 Benalmadena Pueblo

REF# R4688410    250.000 €

BEDS

3

BATHS

3.5

BUILT

246 m<sup>2</sup>

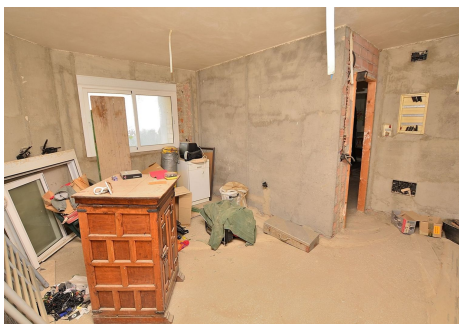
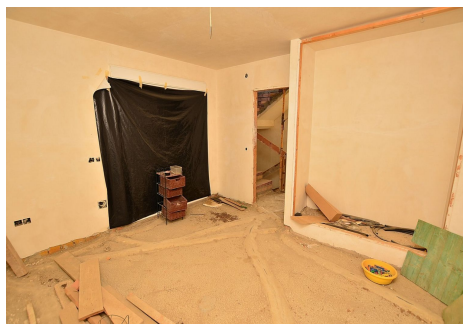
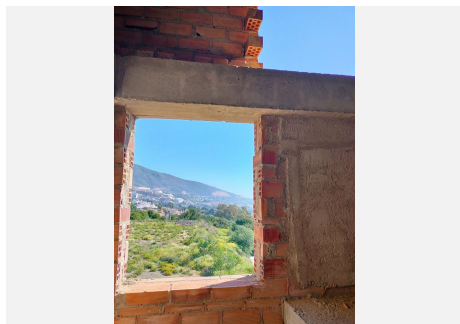
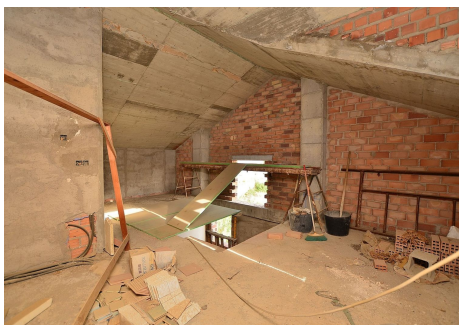
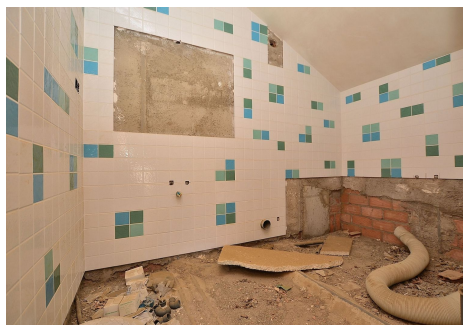
PLOT

101 m<sup>2</sup>

SEMI-DETACHED HOUSE with spectacular SEA VIEWS located in Benalmádena Pueblo, a short distance from the well-known La Fonda hotel. Great location, in a peaceful environment but at same time close to the centre of Benalmádena Pueblo. It is the opportunity to build the property of your dreams. The house is sold as seen in the pictures, so the future owner can finish it to his liking. Basement with space for 2 cars and storage space. It has 2 terraces, approximately 10 m<sup>2</sup> each one, with beautiful views. Sunny and bright property, facing SOUTH. The distribution is as follows: -Basement: Garage with space for 2 cars and storage. -Ground floor: Living room with access to terrace, kitchen and toilet. -Middle floor: 2 bedrooms + 2 bathrooms (one of them en suite). Additionally, each bedroom has access to its own terrace. -Top floor: Master bedroom with en suite bathroom. Total size: 246 m<sup>2</sup>. Useful area: 200 m<sup>2</sup>. Floors: 4. Orientation: South. \*Distances: -Restaurants: 250 mts. -Benalmádena Pueblo centre: 300 mts. -Shops: 300 mts. - Benalmádena Pueblo Town Hall: 500 mts. -Beach: 2.5 km. -Málaga airport: 15 km.

# IDILIQ

ESTATES



PLANTA BORDO: 22.00m<sup>2</sup>, 22.00m<sup>2</sup>, 22.00m<sup>2</sup>, 22.00m<sup>2</sup>  
 PLANTA BATA: 22.00m<sup>2</sup>, 22.00m<sup>2</sup>, 22.00m<sup>2</sup>, 22.00m<sup>2</sup>  
 PLANTA BATA: 22.00m<sup>2</sup>, 22.00m<sup>2</sup>, 22.00m<sup>2</sup>, 22.00m<sup>2</sup>  
 PLANTA BATA CUBIERTA: 22.00m<sup>2</sup>, 22.00m<sup>2</sup>, 22.00m<sup>2</sup>, 22.00m<sup>2</sup>