

# IDILIQ

ESTATES



R4937386

📍 Nueva Andalucía

REF# R4937386 2.750.000 €

BEDS

4

BATHS

4

BUILT

338 m<sup>2</sup>

PLOT

827 m<sup>2</sup>

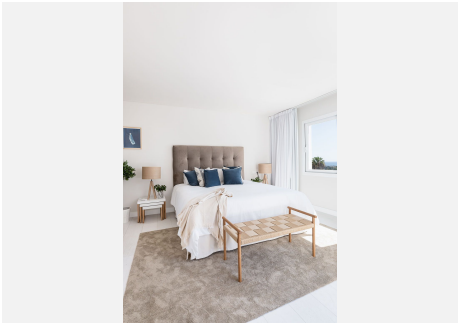
Located in the famous Los Naranjos Hill Club neighbourhood in the center of Nueva Andaluca's Golf Valley, this stunning home has undergone a complete renovation to the best standards and finishes. It has a wonderful south-facing aspect and offers expansive sea and mountain vistas. Several first-rate amenities are within a short distance of the property, including supermarkets, sports facilities, the beach, the bustling Puerto Banus with its upscale shops and restaurants, and nightlife. Also, the villa benefits from being located in a gated neighbourhood with round-the-clock protection. This lovely family home mixes Andalusian flair with a contemporary, light-filled interior. With four bedrooms, each with their own bathroom, and a fully equipped open concept kitchen with direct access to terraces with summer dining, it is spread out over three floors. Bright and open, the living area is smoothly connected to the kitchen and patios, giving a pleasant, breezy feeling. It is a stylish, professionally designed home with a ton of recreational amenities so that every visitor may take full advantage of the ideal indoor-outdoor lifestyle. The garden, which boasts stunning views of the sea and La Concha, also has a sophisticated chill-out area with sunbeds, an elegant swimming pool, and a relaxing outdoor living space. Also, there are two bedrooms with en-suite bathrooms, one of which has a dressing space, on this main floor. The master bedroom, which has an en suite bathroom and dressing area, takes up the entire first floor. Moreover, there is a sizeable patio that receives all-day sun.

+34 951 123 083 | +44 (0)330 179 8687 | [info@idiliqestates.com](mailto:info@idiliqestates.com) Local 28, Edificio D, Centro de Negocios Puerta de Banús, N-340, Km 175, 29660 Nueva Andlaucia

# IDILIQ

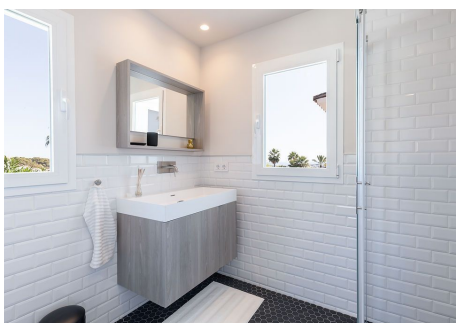
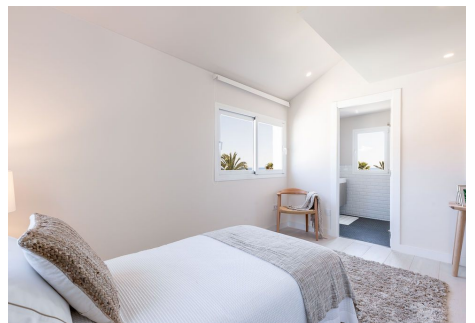
ESTATES

We have one more large, comfortable living area on the basement level, together with an office and a bedroom with an en suite. We can leave from here and enter another private garden. Please request details, prices and availability



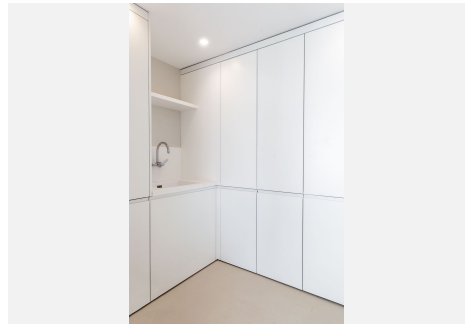
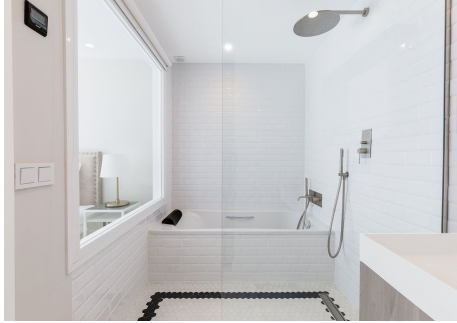
# IDILIQ

ESTATES



# IDILIQ

ESTATES



# IDILIQ

ESTATES

