

# IDILIQ

ESTATES



R4341643

📍 Nueva Andalucía

REF# R4341643 799.000 €

BEDS

4

BATHS

4

BUILT

153 m<sup>2</sup>

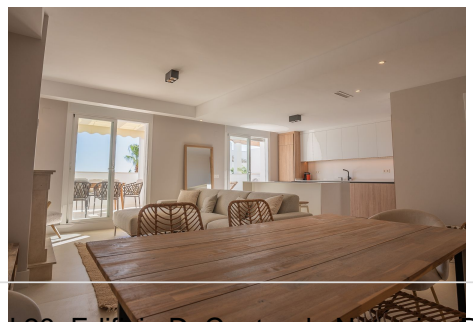
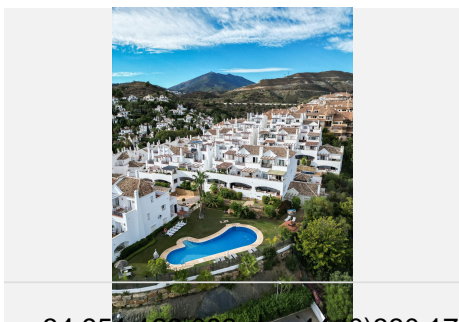
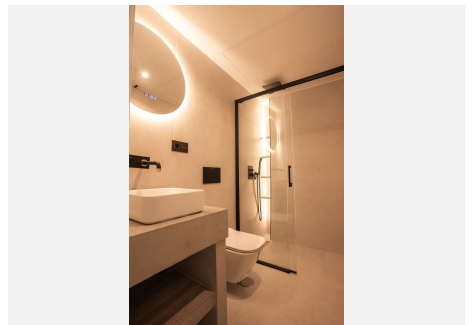
Short Description Unique renovated penthouse duplex in Aloha Royal, Los Naranjos, Golf Valley, Marbella. Stunning sea and pool views 4 bedrooms, 3 bathrooms, Master bedroom with ensuite bathroom and private terrace. Spacious living and dining area with direct access to a terrace-porch Modern open-plan kitchen with top-of-the-line appliances Fireplace. Wine room for wine connoisseurs. Garage in the basement and large storage room. Access to a communal pool sunbeds and beautiful gardens Low monthly community costs. Safe, quiet and upscale neighbourhood, ideal as permanent or second residence. Surrounded by different famous Golf courses ideal for golf enthusiasts while close to all amenities, Puerto Banus, Marbella town and its stunning beaches. Weekly rental price of 2500 euros Long description Wonderful PENTHOUSE DUPLEX with fantastic sea views and common areas in sought-after urbanization Aloha Royal located in the hills of the Golf Valley of Nueva Andaluca, Marbella. It has an excellent location in a quiet and beautiful setting close to all amenities and services, the famous Puerto Banus and the beaches. Surrounded by a variety of golf courses. Very nice private urbanization with communal pool and beautiful gardens. The property covers an area of 145 m<sup>2</sup> and comprises of four bedrooms, three modern bathrooms, a bright and spacious living room with direct access to a wonderful terrace-porch, and a fully-equipped open plan kitchen. The bedrooms are well-proportioned and offer built-in wardrobes. The property has been nicely renovated is

+34 951 123 083 | +44 (0)330 179 8687 | info@idiliqestates.com Local 28, Edificio D, Centro de Negocios Puerta de Banús, N-340, Km 175, 29660 Nueva Andaluca

# IDILIQ

ESTATES

south-facing, ensuring plenty of sunlight and warmth throughout the day. It features air conditioning and a cosy fireplace. The enlarged front terrace is perfect for enjoying the stunning sea views and is ideal for outdoor dining. This property has 145 m<sup>2</sup> distributed in 4 bedrooms, a bright living-dining room with direct access to a wonderful terrace-porch, three bathrooms, and modern fitted and equipped kitchen. It also includes garage and storage room. Basic features 145 m<sup>2</sup> constructed area 4 bedrooms 3 bathrooms Terrace Parking space included Built-in closets Storage room South facing Built in 2006 Central heating 2nd floor exterior Air conditioning Swimming pool Green areas 8 sleeps plus a potential sofa-bed in the living 2500 weekly rental low community fees, (150)





# IDILIQ

ESTATES

