



## HOUSE 4 BEDROOMS 3.5 BATHROOMS IN ESTEPONA

 Estepona

REF# R5272825    1.299.000 €

BEDS

4

BATHS

3.5

BUILT

319 m<sup>2</sup>

PLOT

627 m<sup>2</sup>

Superb opportunity to acquire this stunning Andalusian-style 4-bedroom detached villa, with private pool on the ever-sought-after New Golden Mile in Estepona. This property offers luxury living and convenience in a serene residential area, right on the doorstep of central Estepona. The property is distributed across 3 floors, with over 300 square meters of built space and a plot of 627 square meters.

The entrance floor of the villa is comprised of a fully equipped kitchen and a bright and spacious living area, that leads seamlessly to the outdoor dining terrace, private garden and pool area. The outdoor area offers ample space for dining, relaxation and entertainment in a tranquil and private setting.

The upper floor features an impressive master suite, as well as two spacious guest bedrooms and an additional bathroom. Each bedroom has its own private terrace to enjoy incredible views of the golf course and mountain range in the background. This floor also leads to a private roof terrace with amazing 360-degree panoramic views of the sea and mountains.



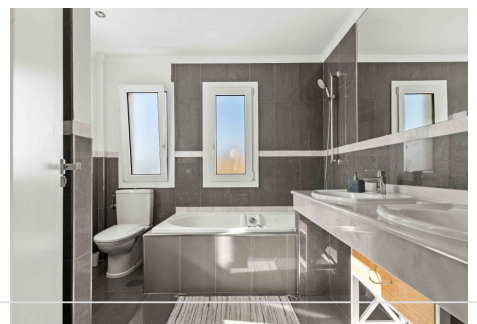
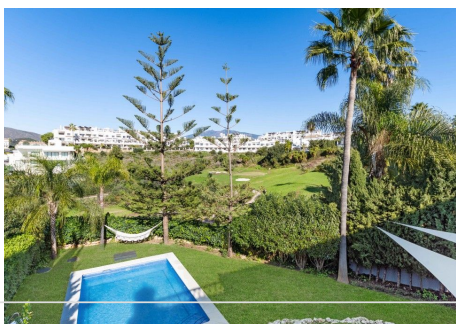
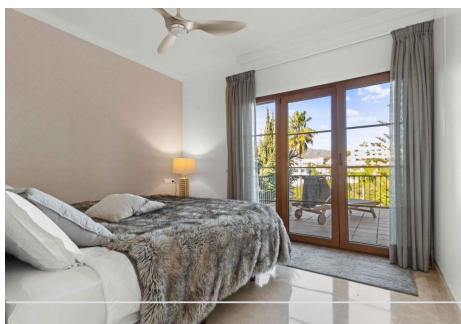
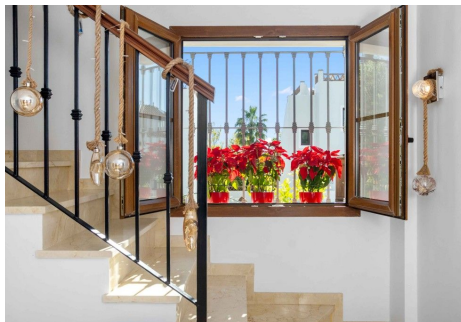
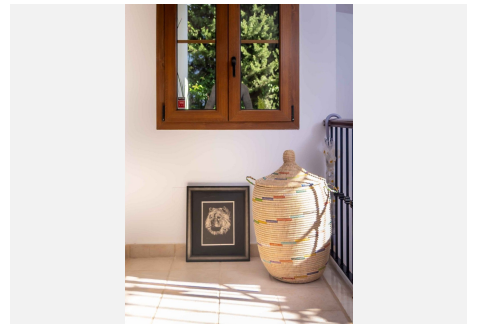
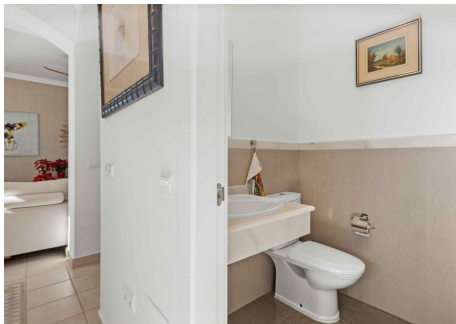
# IDILIQ

## ESTATES

You'll find the fourth bedroom with en-suite and the spacious garage space on the lower floor of the villa. This floor lends itself well to being re-imagined by new owners, it could be converted to a self-contained apartment, gym or entertainment space, if a fourth bedroom is not required.

An ideal permanent residence, second home or high-end investment property, this property must be seen in person to be truly appreciated.

Contact us for a viewing anytime!



+34 951 123 083 | +44 (0)330 179 8687 | [info@idiliqestates.com](mailto:info@idiliqestates.com) Local 28, Edificio D, Centro de Negocios Puerta de Banús, N-340, Km 175, 29660 Nueva Andlucia



# IDILIQ

ESTATES

