

# IDILIQ

ESTATES



R2274860

 Mijas

REF# R2274860 798.000 €

BEDS

4

BATHS

4.5

BUILT

381 m<sup>2</sup>

PLOT

620 m<sup>2</sup>

TERRACE

150 m<sup>2</sup>

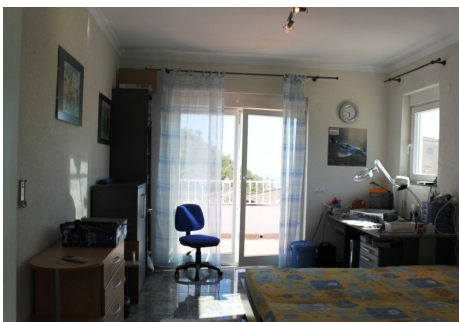
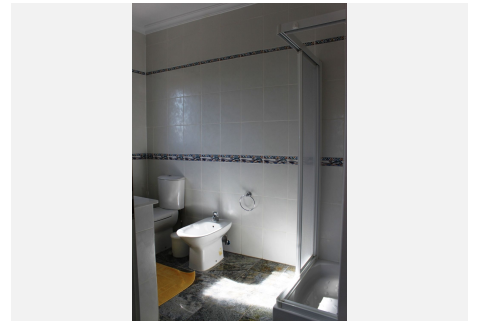
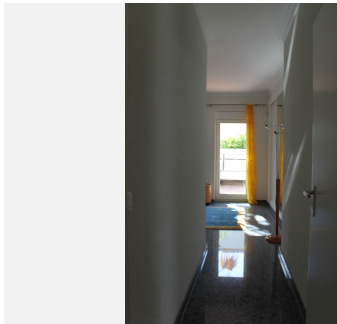
**CONTEMPORARY VILLA WITH PANORAMIC SEA VIEWS - MIJAS AREA - PRICED TO SELL** Located in the 'Mijas Pueblo' area, in a gated, secured and famous urbanization, situated just a few minutes from the village, and only 10 minutes from the beach and 15 minutes to the Málaga international airport, this contemporary villa built over three floors, would be the perfect investment for those looking for a large property with major features and a very low maintenance. The property includes, 3 good size guest bedrooms with their own bathrooms and wardrobes, a large master bedroom ensuite with its own wardrobe and its private access to the back terrace and the office aside, a luminous double living-dining room with chimney and a modern marbled kitchen aside, both with direct access to the front terrace and the swimming pool area. You will also enjoy on the property, some nice features, like a private Sauna with its own bathroom facilities, a charming outdoor Jacuzzi area, a good size swimming pool with its automatic cover, a beautiful relaxing covered lounge area by the pool, and in the basement you will also enjoy, a separated TV & lounge room, a large storage area, a double size 80m<sup>2</sup> garage with its tool area, as well as offering many terraces areas all around the property in order to enjoy the evening diners overlooking the Mediterranean Sea and the surrounding mountains at the back. The entire house is built with German modern high standard and is presenting marble floors throughout and some top of the range materials, as well as being

+34 951 123 083 | +44 (0)330 179 8687 | [info@idiliqestates.com](mailto:info@idiliqestates.com) Local 28, Edificio D, Centro de Negocios Puerta de Banús, N-340, Km 175, 29660 Nueva Andlucia

# IDILIQ

ESTATES

very easy to maintain. WE RECOMMEND ALL VIEWINGS OF THIS PERFECT CONTEMPORARY PROPERTY OFFERING ALL THE FACILITIES IN ORDER TO SPEND SOME GREAT HOLIDAYS.



+34 951 123 083 | +44 (0)330 179 8687 | [info@idiliqestates.com](mailto:info@idiliqestates.com) Local 28, Edificio D, Centro de Negocios Puerta de Banús, N-340, Km 175, 29660 Nueva Andalucía