



R4937518

 Benalmadena Pueblo

REF# R4937518 599.000 €

BEDS

2

BATHS

2

BUILT

100 m<sup>2</sup>

TERRACE

128 m<sup>2</sup>

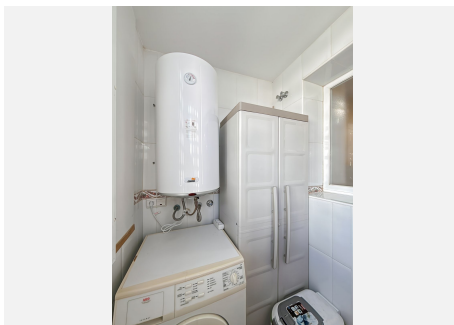
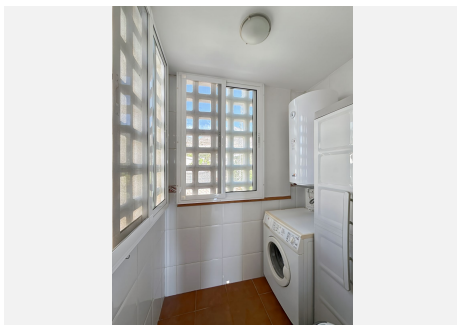
Located in the exclusive and tranquil Arena Golf development, in the prestigious Montealto area of Benalmádena, this spectacular penthouse offers a unique opportunity to live or invest in one of the most sought-after areas of the Costa del Sol. With its south-facing orientation, this penthouse with a living room, 2 bedrooms, and 2 bathrooms guarantees abundant natural light and panoramic views of the sea and mountains from its impressive 128 m<sup>2</sup> terrace, perfect for relaxing or enjoying outdoor dining. One of the most outstanding features of Arena Golf is that it is the only development in Benalmádena with its own 18-hole golf course, making it an ideal location for golf enthusiasts. The gated community ensures security and privacy, making it perfect for both families and those seeking a second residence. Arena Golf offers a family-friendly atmosphere and exceptional facilities, including five swimming pools, tennis and paddle courts, extensive communal gardens, a modern gym, and a cozy café. The development also features 24/7 security surveillance with CCTV cameras, providing maximum peace of mind for all residents. The penthouse is designed for maximum comfort, featuring a spacious 26 m<sup>2</sup> living room that opens onto the terrace, allowing you to enjoy the views and the Mediterranean breeze. The independent kitchen, fully equipped with AEG appliances, offers 8 m<sup>2</sup> of space and access to a 3 m<sup>2</sup> laundry room. The two bedrooms, tastefully decorated, are fitted with built-in wardrobes and large windows, flooding the rooms with natural

+34 951 123 083 | +44 (0)330 179 8687 | [info@idiliqestates.com](mailto:info@idiliqestates.com) Local 28, Edificio D, Centro de Negocios Puerta de Banús, N-340, Km 175, 29660 Nueva Andalucía

# IDILIQ

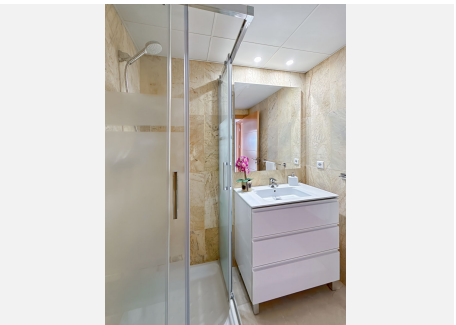
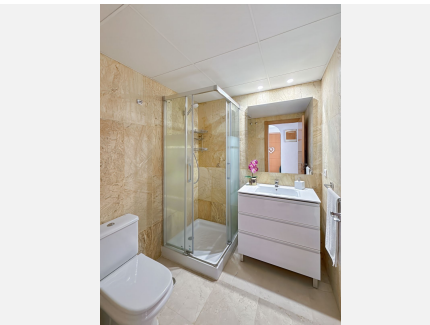
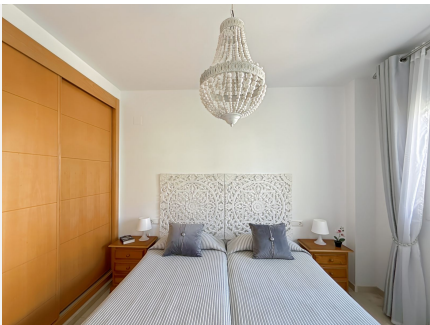
## ESTATES

light. The master bedroom, measuring 14 m<sup>2</sup>, has direct access to the terrace and an en-suite bathroom, while the second bedroom, at 12 m<sup>2</sup>, is also spacious and bright. The two bathrooms, with marble finishes, add a touch of luxury, with the master bedroom featuring an en-suite bathroom. The location is another major highlight. Arena Golf is strategically located near the renowned Torrequebrada Golf Course and just a few minutes' drive from essential services such as Vithas Xanit International Hospital and international schools like Novaschool Benalmádena. The sea is only a 4-minute drive away, offering easy access to the beautiful beaches of Benalmádena. The area boasts excellent public transport connections, supermarkets, restaurants, and a variety of sports facilities. The property includes two underground parking spaces, each measuring 5 m x 2.5 m with a height of 3 meters, adding convenience and security. With only 10 neighbors in the building and being the only penthouse on the floor, exclusivity and tranquility are guaranteed. Thanks to its south-facing orientation, the penthouse enjoys sunlight throughout the day, making it an excellent option for permanent living or as an investment in one of the most attractive areas of the Costa del Sol. Don't miss the opportunity to live in the only enclave in Benalmádena with a private golf course, surrounded by peace, luxury, and nature, yet with all amenities close by. For more information or to schedule a viewing, please don't hesitate to contact us.



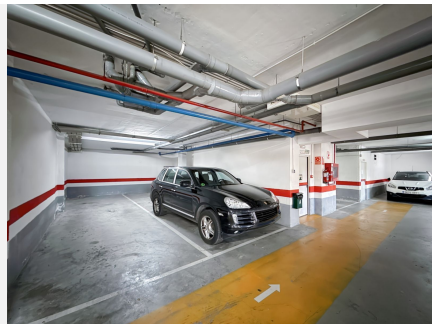
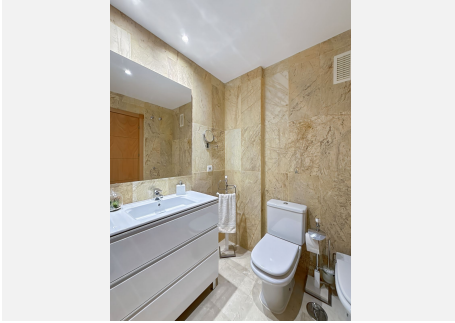
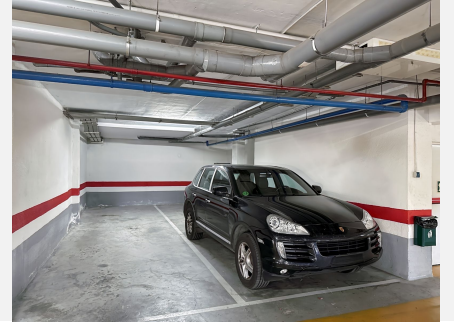
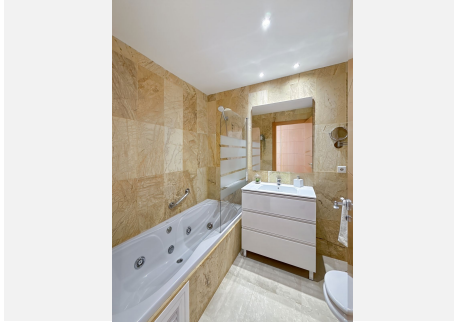
# IDILIQ

ESTATES



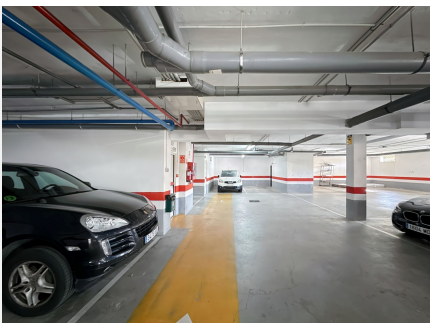
# IDILIQ

ESTATES



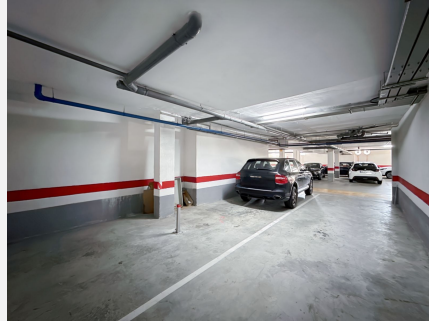
# IDILIQ

ESTATES



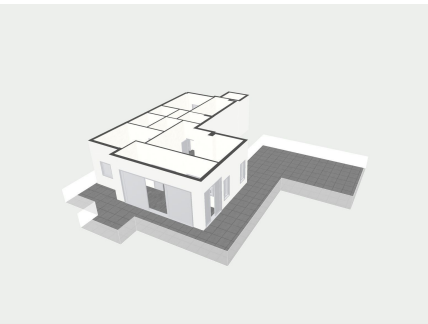
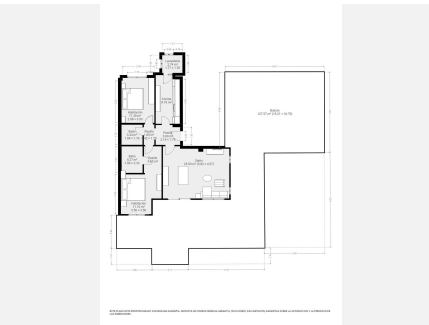
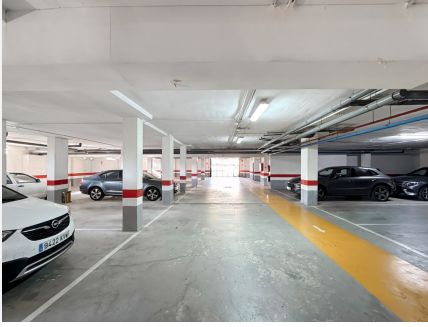
# IDILIQ

ESTATES



# IDILIQ

ESTATES



# IDILIQ

ESTATES

