



HOUSE 5 BEDROOMS 6 BATHROOMS IN NUEVA ANDALUCÍA

📍 Nueva Andalucía

REF# R5110468 4.990.000 €

BEDS	BATHS	BUILT	PLOT	TERRACE
5	6	556 m ²	1263 m ²	418 m ²

With its ideal east-facing orientation and breathtaking views of La Concha, this outstanding contemporary villa is flooded with natural light all day long. Situated in the prestigious Golf Valley of Nueva Andalucía, it offers an unparalleled blend of style, comfort, and prime location. The property's architecture is synonymous with luxury and elegance, crafted with high-end materials that beautifully decorate the property's exterior. Villa Camellia also boasts plenty of floor to ceiling windows and glass sliding doors, ideal for letting in an abundance of natural light. The generous exterior terraces allow for enjoying the outdoors and 320 days of sun Marbella offers its residents. The bespoke solarium equipped with a jacuzzi is perfect for indulging in the luxurious Marbella lifestyle.

Villa Camellia's infinity pool that overlooks the La Concha mountain is perfect for dips during warm summers. The ample plot size and manicured gardens create an ideal atmosphere that provides privacy and tranquillity. The interiors have been curated to display fantastic furniture and finishings, creating an aesthetic yet practical living space. The open-plan living, dining and kitchen have direct terrace access,

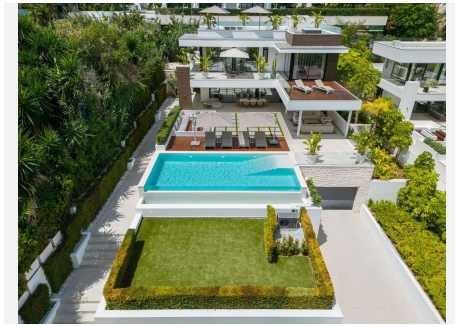
+34 951 123 083 | +44 (0)330 179 8687 | info@idiliqestates.com Local 28, Edificio D, Centro de Negocios Puerta de Banús, N-340, Km 175, 29660 Nueva Andlaucia

IDILIQ

ESTATES

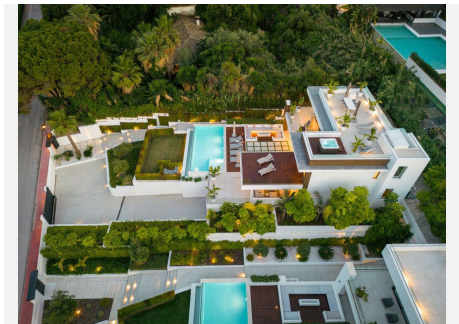
allowing to maximise indoor-outdoor living. Each bedroom has been elegantly designed to not only serve as a fashionable space but one that exudes comfort, acting as the perfect space to unwind and relax. With its prime location, fantastic interiors and ample terraces, Villa Camellia will impress all who visit.

LET US MOVE YOU!



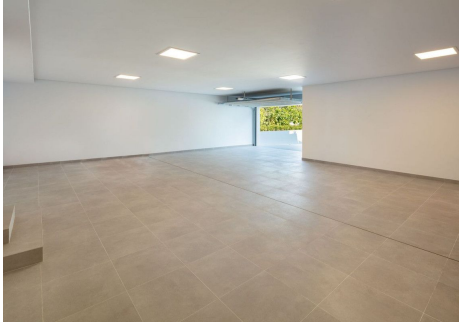
IDILIQ

ESTATES



IDILIQ

ESTATES



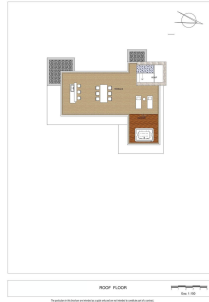
Basement Floor



First Floor



Second Floor



Roof Floor