



R5074132

📍 San Luis de Sabinillas

REF# R5074132 290.000 €

BEDS

2

BATHS

2

BUILT

100 m²

TERRACE

40 m²

Elegant 2-Bedroom Apartment with Spacious Terrace in La Duquesa – Open Views, Comfort, and Prime Location

We present this excellent property located in one of the most sought-after areas of La Duquesa, Manilva. Situated on a middle floor of a well-maintained complex, this spacious apartment stands out for its brightness, privacy, and a large 40m² terrace – ideal for enjoying the Mediterranean climate all year round.

The property features two double bedrooms and two full bathrooms, perfectly distributed to offer comfort and functionality whether as a permanent residence or holiday home. The kitchen is independent and fully equipped, with an adjacent laundry area. The living-dining room is spacious and inviting, with direct access to the terrace.

From the terrace, you can enjoy open views of the natural surroundings – mountains, vineyards, and a pleasant partial view of the sea. It's the perfect spot to relax, sunbathe, read, or share unforgettable moments with friends and family.

+34 951 123 083 | +44 (0)330 179 8687 | [info@idiliqestates.com](mailto:info@idiliqestates.com) Local 28, Edificio D, Centro de Negocios Puerta de Banús, N-340, Km 175, 29660 Nueva Andlucia

# IDILIQ

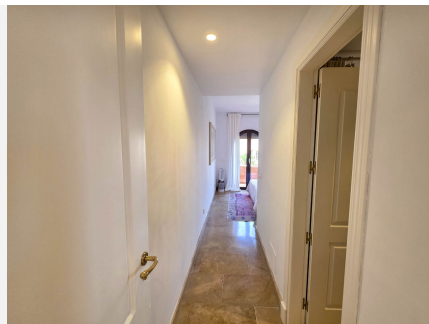
## ESTATES

The apartment includes a private garage space and storage room, and is equipped with an elevator, air conditioning, and southeast/southwest orientation, ensuring natural light throughout the day.

The residential complex offers excellent communal areas, including a swimming pool for adults, a children's pool, paddle tennis court, playground, and landscaped gardens. All within a gated and secure environment – ideal for families or those seeking peace and proximity to the coast.

Its location is unbeatable: just a few minutes' drive from the marina of La Duquesa, sandy beaches, supermarkets, golf courses, and essential services. It also has easy access to the main road connecting to Sotogrande (10 min), Estepona (15 min), and Málaga Airport (approx. 1 hour).

A property ready to move into – perfect for those who value outdoor space, light, and a strategic location on the Costa del Sol.





# IDILIQ

ESTATES

