



R3229714

📍 San Pedro de Alcántara

REF# R3229714 4.250.000 €

BEDS

6

BATHS

6

BUILT

561 m²

PLOT

806 m²

TERRACE

221 m²

Spacious beachside villa in popular San Pedro, a short drive west of Marbella and Puerto Banús, and within walking distance of the beach promenade, shops and restaurants. This house is set in manicured gardens with a swimming pool, offering a perfect combination of indoor and outdoor spaces, including a fantastic 120m² roof terrace with panoramic views. On the entrance level, we find an entrance hall, a living room with fireplace, a dining room connected to a large fully equipped kitchen with breakfast area, a laundry/utility room, a guest toilet and an en-suite guest bedroom. Additionally, there is a large covered terrace overlooking the pool. On the upper floor, there are two guest suites with terraces, and the master suite with a sunny open terrace and access to the roof terrace. The naturally lit basement offers a games room, two additional bedrooms (for beds), a family bathroom and a large garage that can accommodate 3-4 cars. There are also storage areas and engine rooms. This villa offers a spacious and comfortable environment, with a well thought out layout that makes the most of the different areas of the house. The location close to the beach and the amenities of San Pedro, as well as the ease of access to Marbella and Puerto Banús, make it an ideal option for those looking to enjoy a relaxed lifestyle on the Costa del Sol.

IDILIQ

ESTATES



IDILIQ

ESTATES

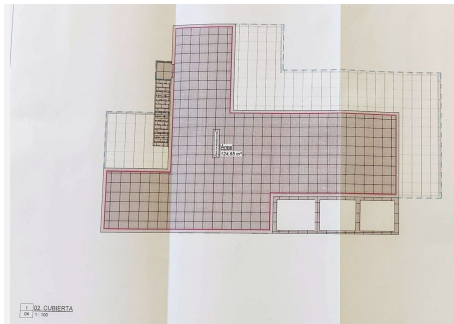
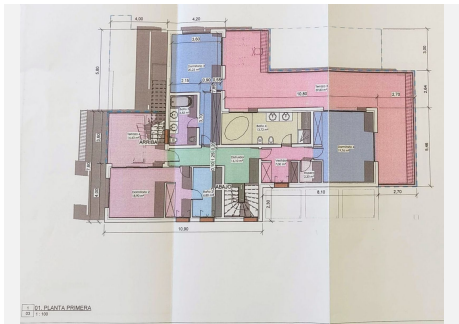
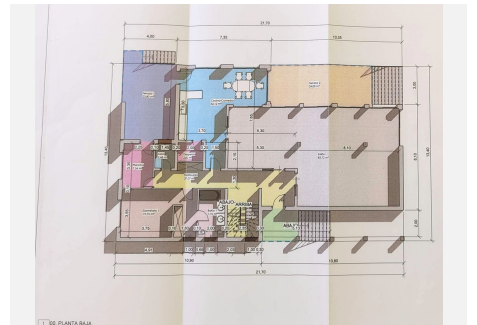
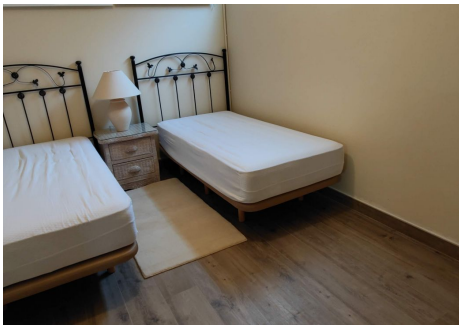
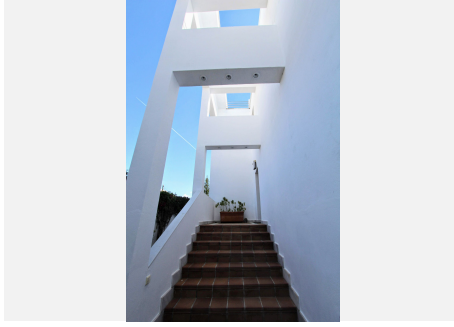


Tabla de Superficies Útiles				
Nivel	Descripción	Área	Superficie	Volumen
01	01.01	138,21	138,21	138,21
02	02.01	138,21	138,21	138,21
03	03.01	138,21	138,21	138,21
04	04.01	138,21	138,21	138,21
05	05.01	138,21	138,21	138,21
06	06.01	138,21	138,21	138,21
07	07.01	138,21	138,21	138,21
08	08.01	138,21	138,21	138,21
09	09.01	138,21	138,21	138,21
10	10.01	138,21	138,21	138,21
11	11.01	138,21	138,21	138,21
12	12.01	138,21	138,21	138,21
13	13.01	138,21	138,21	138,21
14	14.01	138,21	138,21	138,21
15	15.01	138,21	138,21	138,21
16	16.01	138,21	138,21	138,21
17	17.01	138,21	138,21	138,21
18	18.01	138,21	138,21	138,21
19	19.01	138,21	138,21	138,21
20	20.01	138,21	138,21	138,21
21	21.01	138,21	138,21	138,21
22	22.01	138,21	138,21	138,21
23	23.01	138,21	138,21	138,21
24	24.01	138,21	138,21	138,21
25	25.01	138,21	138,21	138,21
26	26.01	138,21	138,21	138,21
27	27.01	138,21	138,21	138,21
28	28.01	138,21	138,21	138,21
29	29.01	138,21	138,21	138,21
30	30.01	138,21	138,21	138,21
31	31.01	138,21	138,21	138,21
32	32.01	138,21	138,21	138,21
33	33.01	138,21	138,21	138,21
34	34.01	138,21	138,21	138,21
35	35.01	138,21	138,21	138,21
36	36.01	138,21	138,21	138,21
37	37.01	138,21	138,21	138,21
38	38.01	138,21	138,21	138,21
39	39.01	138,21	138,21	138,21
40	40.01	138,21	138,21	138,21
41	41.01	138,21	138,21	138,21
42	42.01	138,21	138,21	138,21
43	43.01	138,21	138,21	138,21
44	44.01	138,21	138,21	138,21
45	45.01	138,21	138,21	138,21
46	46.01	138,21	138,21	138,21
47	47.01	138,21	138,21	138,21
48	48.01	138,21	138,21	138,21
49	49.01	138,21	138,21	138,21
50	50.01	138,21	138,21	138,21
51	51.01	138,21	138,21	138,21
52	52.01	138,21	138,21	138,21
53	53.01	138,21	138,21	138,21
54	54.01	138,21	138,21	138,21
55	55.01	138,21	138,21	138,21
56	56.01	138,21	138,21	138,21
57	57.01	138,21	138,21	138,21
58	58.01	138,21	138,21	138,21
59	59.01	138,21	138,21	138,21
60	60.01	138,21	138,21	138,21
61	61.01	138,21	138,21	138,21
62	62.01	138,21	138,21	138,21
63	63.01	138,21	138,21	138,21
64	64.01	138,21	138,21	138,21
65	65.01	138,21	138,21	138,21
66	66.01	138,21	138,21	138,21
67	67.01	138,21	138,21	138,21
68	68.01	138,21	138,21	138,21
69	69.01	138,21	138,21	138,21
70	70.01	138,21	138,21	138,21
71	71.01	138,21	138,21	138,21
72	72.01	138,21	138,21	138,21
73	73.01	138,21	138,21	138,21
74	74.01	138,21	138,21	138,21
75	75.01	138,21	138,21	138,21
76	76.01	138,21	138,21	138,21
77	77.01	138,21	138,21	138,21
78	78.01	138,21	138,21	138,21
79	79.01	138,21	138,21	138,21
80	80.01	138,21	138,21	138,21
81	81.01	138,21	138,21	138,21
82	82.01	138,21	138,21	138,21
83	83.01	138,21	138,21	138,21
84	84.01	138,21	138,21	138,21
85	85.01	138,21	138,21	138,21
86	86.01	138,21	138,21	138,21
87	87.01	138,21	138,21	138,21
88	88.01	138,21	138,21	138,21
89	89.01	138,21	138,21	138,21
90	90.01	138,21	138,21	138,21
91	91.01	138,21	138,21	138,21
92	92.01	138,21	138,21	138,21
93	93.01	138,21	138,21	138,21
94	94.01	138,21	138,21	138,21
95	95.01	138,21	138,21	138,21
96	96.01	138,21	138,21	138,21
97	97.01	138,21	138,21	138,21
98	98.01	138,21	138,21	138,21
99	99.01	138,21	138,21	138,21
100	100.01	138,21	138,21	138,21