



BEAUTIFULLY RENOVATED PENTHOUSE WITH SPECTACULAR VIEWS

 Benahavís

REF# R5250013 448.000 €

BEDS

3

BATHS

3

BUILT

131 m²

TERRACE

82 m²

Beautifully Renovated Penthouse with Spectacular Views of La Concha Mountain, El Paraíso Golf and the Mediterranean Sea.

This property offers the perfect blend of resort hotel services and amenities with the independence of an apartment. Enjoy access to multiple swimming pools, lush gardens, a co-working space, and a professionally equipped gym.

The resort is a serene haven on the edge of El Paraiso Golf, and surrounded by Villa Padierna Golf, Tramores Golf, Atalaya Golf, and Guadalmina Golf. Located at the intersection of Marbella, Estepona, and Benahavís, only minutes from stunning beaches.

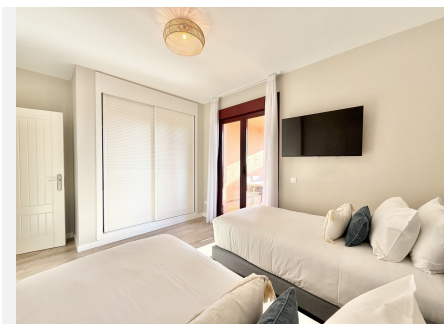
The resort's rental program makes owning a Marbella property effortless, allowing you to enjoy a holiday home in a fully serviced resort while also benefiting from consistent rental income potential.

IDILIQ

ESTATES

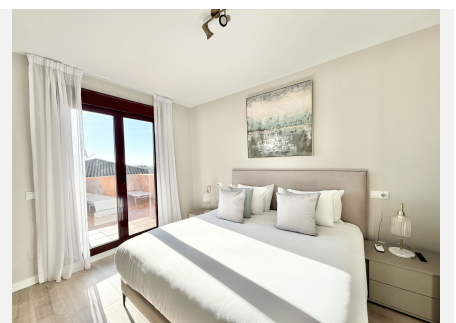
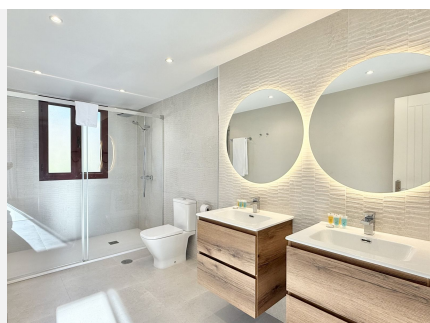
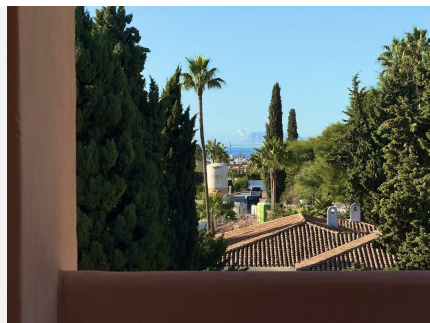
Underground parking and storage room included.

We are pleased to announce a small selection of available units, prices ranging from 245.000 € to 449.000 €. Contact us today for more information.



IDILIQ

ESTATES



IDILIQ

ESTATES

