



CHARMING 2-BEDROOM TOP-FLOOR APARTMENT IN CALAHONDA

 Calahonda

REF# R5076082 389.000 €

BEDS

2

BATHS

2

BUILT

85 m²

TERRACE

33 m²

Charming 2-Bedroom Top-Floor Apartment in the Peaceful Hills of Calahonda

Nestled in the lush and peaceful hills of upper Calahonda, this stunning top-floor apartment offers an exceptional living environment, blending absolute tranquility with breathtaking panoramic views of the Mediterranean Sea and the surrounding mountains. Here, only the songs of birds and the gentle whisper of the breeze disturb the silence — a true sanctuary for nature lovers.

This bright and airy property features:

- * Total built area: 80 m²
- * Spacious main terrace of 33 m² facing southeast — perfect for outdoor dining, quiet reading, or simply enjoying the views, with lovely sunlight from morning until late afternoon
- * Second terrace accessible from the second bedroom

IDILIQ

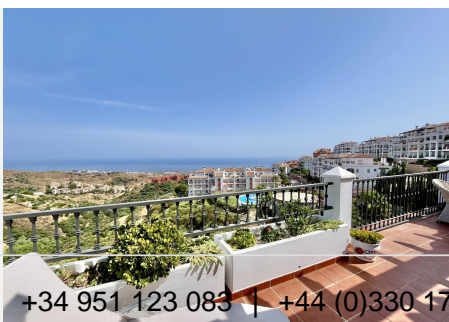
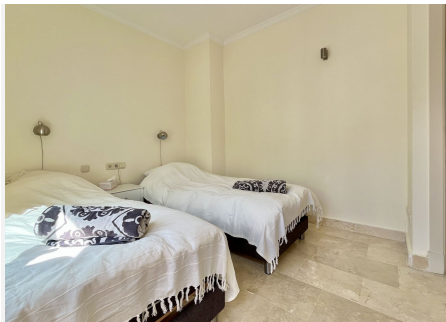
ESTATES

- * Generous living room of 30 m², flooded with natural light thanks to large windows
- * Entrance hall
- * Two bedrooms
- * Two bathrooms
- * Electric roller shutters on all windows incl. living room
- * Elevator
- * Private covered parking space
- * Storage room included

The apartment is sold fully furnished, ready to welcome its new owners without any hassle.

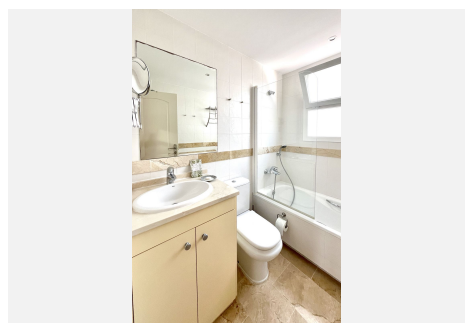
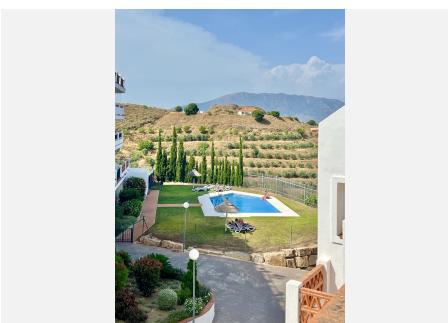
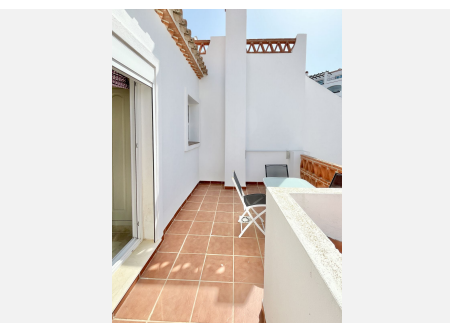
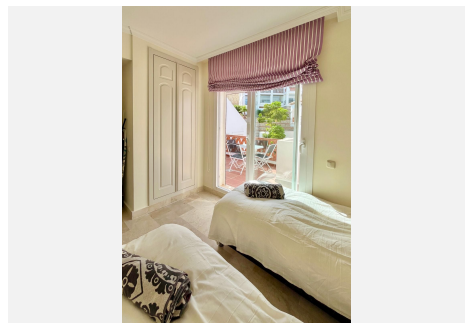
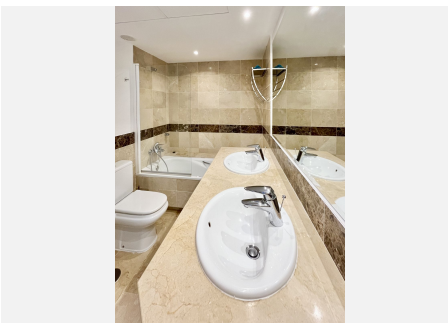
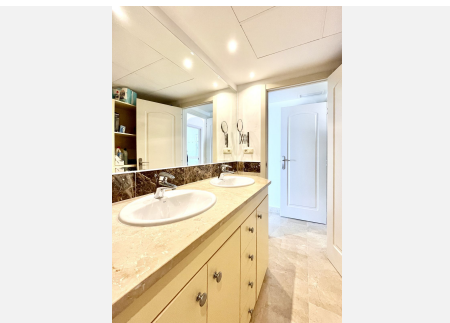
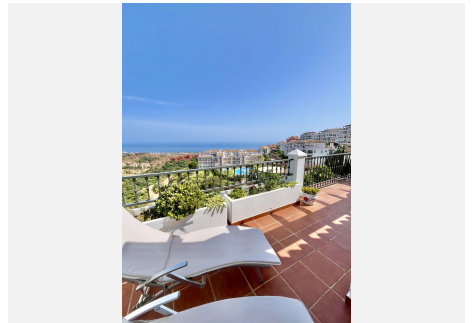
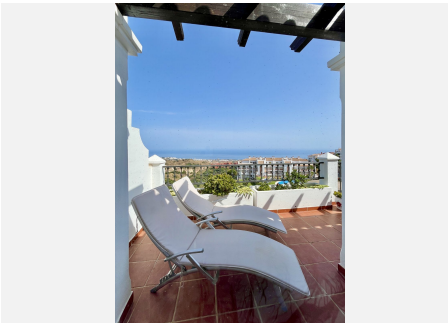
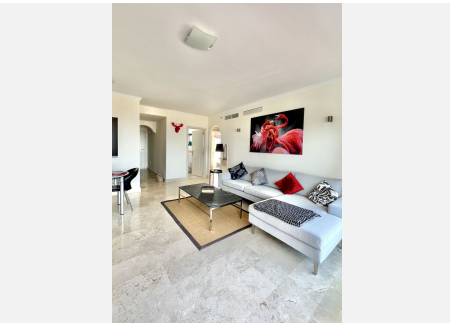
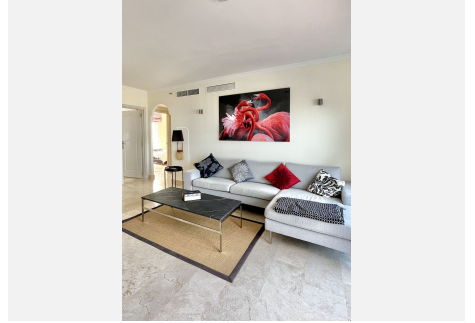
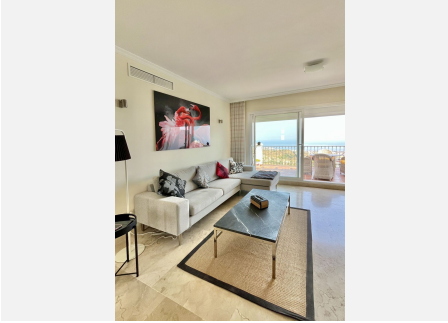
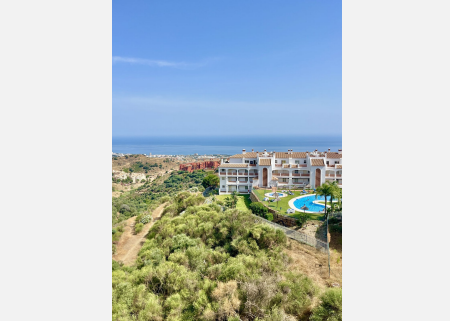
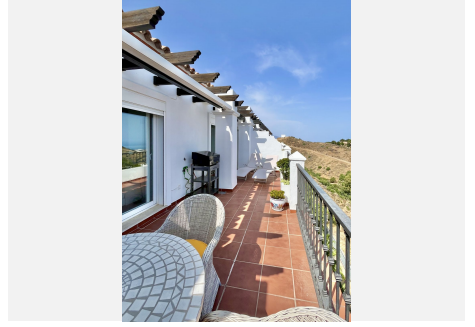
Located in a secure gated community comprising 14 thoughtfully designed buildings surrounded by meticulously maintained Mediterranean gardens, residents enjoy access to five communal swimming pools, including a children's paddling pool. A particular highlight of this building is its own private swimming pool reserved exclusively for its residents.

Despite this peaceful setting, the beaches, shops, and restaurants of Calahonda are less than a 10-minute drive away.



IDILIQ

ESTATES



IDILIQ

ESTATES

