



## AMAZING SOUTH-FACING CONTEMPORARY VILLA IN ATALAYA

📍 Benahavís

REF# R4828363 2.295.000 €

BEDS

4

BATHS

4

BUILT

300 m<sup>2</sup>

PLOT

1140 m<sup>2</sup>

TERRACE

100 m<sup>2</sup>

This contemporary four-bedroom detached villa, located in Atalaya Isdabe, is a perfect blend of comfort and luxury. Its prime location offers the convenience of being within walking distance to supermarkets, shops, cafés, and restaurants, as well as easy access to public transport, all just a five-minute walk from the beach. The villa is spread over two levels. On the ground floor, you're welcomed by a generous entrance hallway that leads to a beautifully designed living room, which is seamlessly integrated with the dining and kitchen areas. Large windows overlook the magnificent grounds, providing plenty of natural light. Adjacent to the kitchen is a separate utility room with access to a covered carport that accommodates two cars. This level also features a comfortable double bedroom with an en-suite bathroom, a private terrace, and a separate guest toilet. The first floor is home to three additional bedrooms, each with its own en-suite bathroom. The master bedroom is particularly special, situated in the middle of the house and boasting two spacious terraces that face south and east, allowing you to enjoy stunning sunrises and sunsets. Constructed just five years ago, this villa is well-suited for both primary residence and vacation home. The landscaped garden is a standout feature, offering a flat plot surrounded by palm trees and various plants and flowers, ensuring complete privacy. Its south-facing orientation allows abundant light to fill every corner of this exquisite home,

+34 951 123 083 | +44 (0)330 179 8687 | info@idiliqestates.com Local 28, Edificio D, Centro de Negocios Puerta

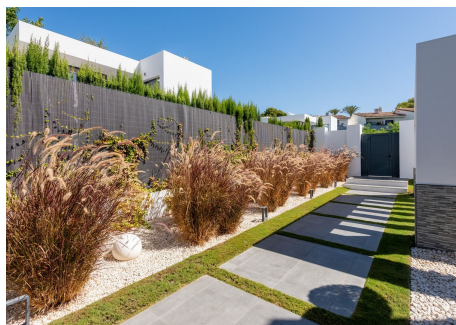
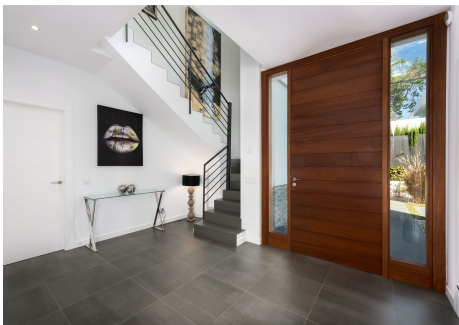
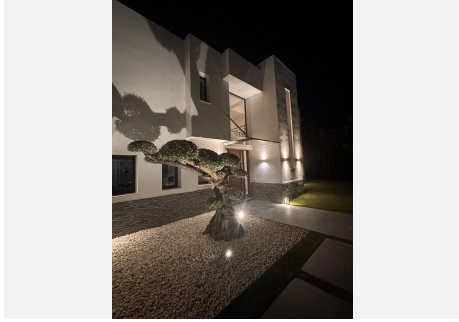
de Banús, N-340, Km 175, 29660 Nueva Andlucia



# IDILIQ

ESTATES

enhancing its inviting atmosphere.



+34 951 123 083 | +44 (0)330 179 8687 | [info@idiligestates.com](mailto:info@idiligestates.com) Local 28, Edificio D, Centro de Negocios Puerta de Banús, N-340, Km 175, 20660 Nueva Andalucía



# IDILIQ

ESTATES





# IDILIQ

ESTATES





# IDILIQ

ESTATES

