

IDILIQ

ESTATES



R4760602

 Nueva Andalucía

REF# R4760602 7.450.000 €

BEDS

5

BATHS

7

BUILT

742 m²

PLOT

909 m²

TERRACE

305 m²

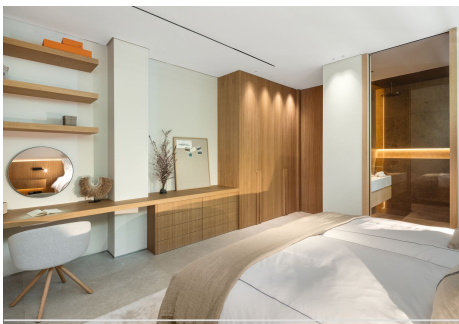
Discover an architectural masterpiece in Nueva Andalucía, where every detail is designed to offer an unmatched lifestyle. Just minutes from Puerto Banús and within walking distance of all amenities, this extraordinary property combines stunning modern design with an unbeatable location. The exterior of the villa features a striking infinity pool that extends from the garden to the interior, enhanced by LED lights that create an enchanting atmosphere at night. A generous terrace offers multiple lounging areas and alfresco dining spaces, perfect for entertaining or relaxing in style. Accessible via a private road, the villa includes a private garage, ensuring maximum privacy and security. Upon entering, the interior is simply spectacular. The open-concept living, dining and kitchen area is bathed in natural light thanks to floor-to-ceiling windows and a double-height ceiling that adds an airy, spacious feel. The living area features stunning Tajal Travertine stone walls, mimicking the exterior of the villa, and a cozy nook adorned with charming trees. The kitchen is a dream, with generous proportions, state-of-the-art appliances, natural oak accents, ample storage and direct access to both formal and intimate dining areas. An elevator connects all levels for added convenience and leads to the roof terrace which offers 360° views of La Concha and the Mediterranean Sea. The villa offers five exquisitely decorated ensuite bedrooms, each designed for maximum style and comfort. The master bedroom is truly stunning, with direct access to the terrace, a dedicated beauty section

+34 951 123 083 | +44 (0)330 179 8687 | info@idiliqestates.com Local 28, Edificio D, Centro de Negocios Puerta de Banús, N-340, Km 175, 29660 Nueva Andalucía

IDILIQ

ESTATES

and a luxurious master bathroom. Additionally, the villa includes an incredible level of entertainment, equipped with a custom bar, wine cellar, lounge and TV section that doubles as a home cinema. From this level you can see the impressive pool, adding a unique visual appeal. Located in a privileged location in Nueva Andalucía, the villa offers proximity to the famous Hard Rock Hotel, the Centro Plaza shopping center and the vibrant Puerto Banús. With easy access to the A-7 coastal road, the property effortlessly connects you to the surrounding areas, making it an enviable address for those seeking luxury and convenience in Marbella.



IDILIQ

ESTATES

