



## AMAZING APARTMENT IN FIRST-CLASS COMPLEX WITH PRIVATE GOLF COURSE IN ELVIRIA HILLS

 Elviria

REF# R4905805 750.000 €

BEDS

3

BATHS

2.5

BUILT

133 m²

TERRACE

52 m²

Welcome to a home designed for well-being and enjoyment located in Elviria Hills. This home belongs to a first-class complex, which has, among other notable features, a private 9-hole par 3 golf course, swimming pools, two clay tennis courts, a charming lake at the foot of the renowned restaurant "El Lago", which appears in the Michelin Guide, also within the boundaries of the development, as well as large and well-kept communal green areas. The apartment has three bedrooms, a guest toilet at the entrance hall and two bathrooms, one of them en suite, a fully equipped kitchen and laundry room, a spacious living room with access to a 40m2 south facing terrace and open views to the green areas, sea, golf and the lake. Besides the property comprises underground parking and storage room. This wonderful development boasts top quality buildings, with excellent materials and construction features, spacious rooms, in a natural setting surrounded by vegetation, combining privacy and discretion with the aforementioned range of options for leisure time. Furthermore, due to its location, the apartment is at a short distance from the commercial centre of Elviria, with its varied gastronomic offer, leisure facilities, supermarkets, pharmacies, schools, and all the services that may be needed if one chooses this property as a first home. All these characteristics also make the property an example of a holiday home ... without forgetting its enormous rental potential.

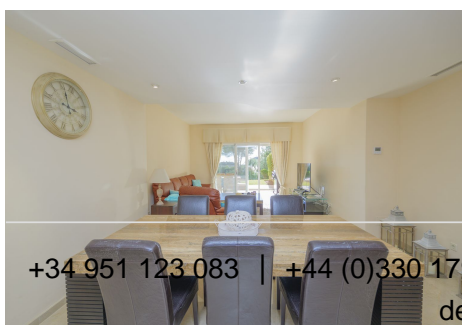
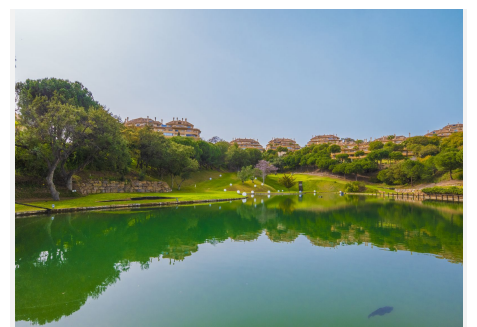
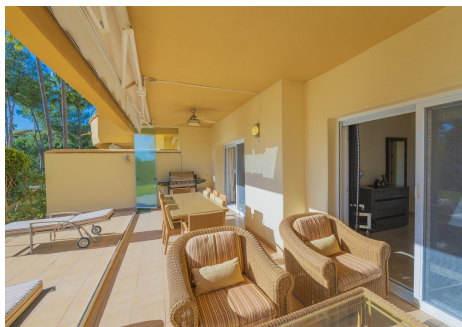
+34 951 123 083 | +44 (0)330 179 8687 | [info@idiliqestates.com](mailto:info@idiliqestates.com) Local 28, Edificio D, Centro de Negocios Puerta

de Banús, N-340, Km 175, 29660 Nueva Andlucia

# IDILIQ

ESTATES

Come and visit, we assure you that this house will not disappoint you.



+34 951 123 083 | +44 (0)330 179 8687 | [info@idiliqestates.com](mailto:info@idiliqestates.com) Local 28, Edificio D, Centro de Negocios Puerta de Banús, N-340, Km 175, 29660 Nueva Andlucia

# IDILIQ

ESTATES



# IDILIQ

ESTATES

