



BEAUTIFUL PENTHOUSE DUPLEX WITH PANORAMIC SEA VIEWS IN ELVIRIA

 Elviria

REF# R4890817 350.000 €

BEDS

2

BATHS

2

BUILT

121 m²

BEAUTIFUL PENTHOUSE DUPLEX WITH PANORAMIC SEA VIEWS IN ELVIRIA Discover this exceptional 2-bedroom, 2-bathroom penthouse duplex located in a peaceful urbanisation in upper Elviria. This property combines modern comfort with breathtaking views, offering a perfect retreat on the Costa del Sol. The highlight of this penthouse is the expansive wrap-around terrace on the main floor, where you can enjoy panoramic vistas, including stunning sea views. Whether relaxing, dining al fresco, or entertaining, this terrace provides a spectacular outdoor living experience. Inside, the penthouse features a bright and spacious layout with well-appointed rooms. The property includes a private space in an underground garage and a large storage room, adding convenience and practicality. Situated just a short drive from Marbella and all local amenities, this penthouse offers the perfect balance of tranquility and accessibility. Whether as a permanent residence, a holiday home, or an investment, this is a unique opportunity to own a piece of paradise in Elviria. Don't miss this incredible opportunity—contact us today to schedule your visit and experience this stunning penthouse duplex in Elviria for yourself! Penthouse Duplex, Elviria, Costa del Sol. 2 Bedrooms, 2 Bathrooms, Built 121 m². Setting : Village, Close To Golf, Close To Shops, Close To Sea, Urbanisation. Orientation : East, South, West. Condition : Good. Pool : Communal. Climate Control : Air +34 951 123 083 | +44 (0)330 179 8687 | info@idiliqestates.com Local 28, Edificio D, Centro de Negocios Puerta de Banús, N-340, Km 175, 29660 Nueva Andlucia

IDILIQ

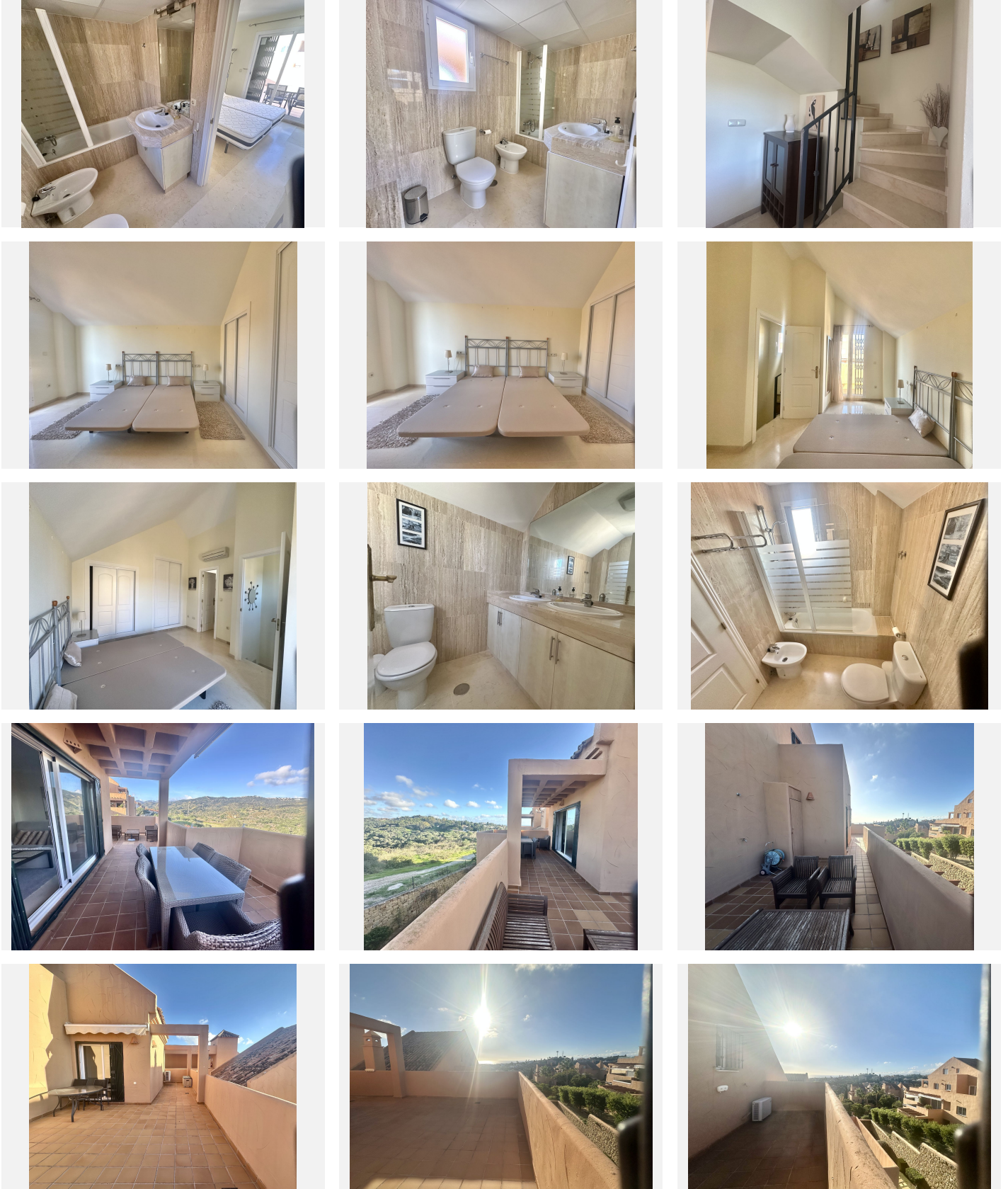
ESTATES

Conditioning, Hot A/C, Cold A/C. Views : Sea, Mountain, Panoramic, Garden, Urban. Features : Covered Terrace, Lift, Fitted Wardrobes, Near Transport, Private Terrace, Storage Room, Utility Room, Ensuite Bathroom. Furniture : Fully Furnished. Kitchen : Fully Fitted. Garden : Communal. Security : Gated Complex. Parking : Underground, Garage, Covered, Private. Utilities : Electricity. Category : Holiday Homes, Investment, Reduced.



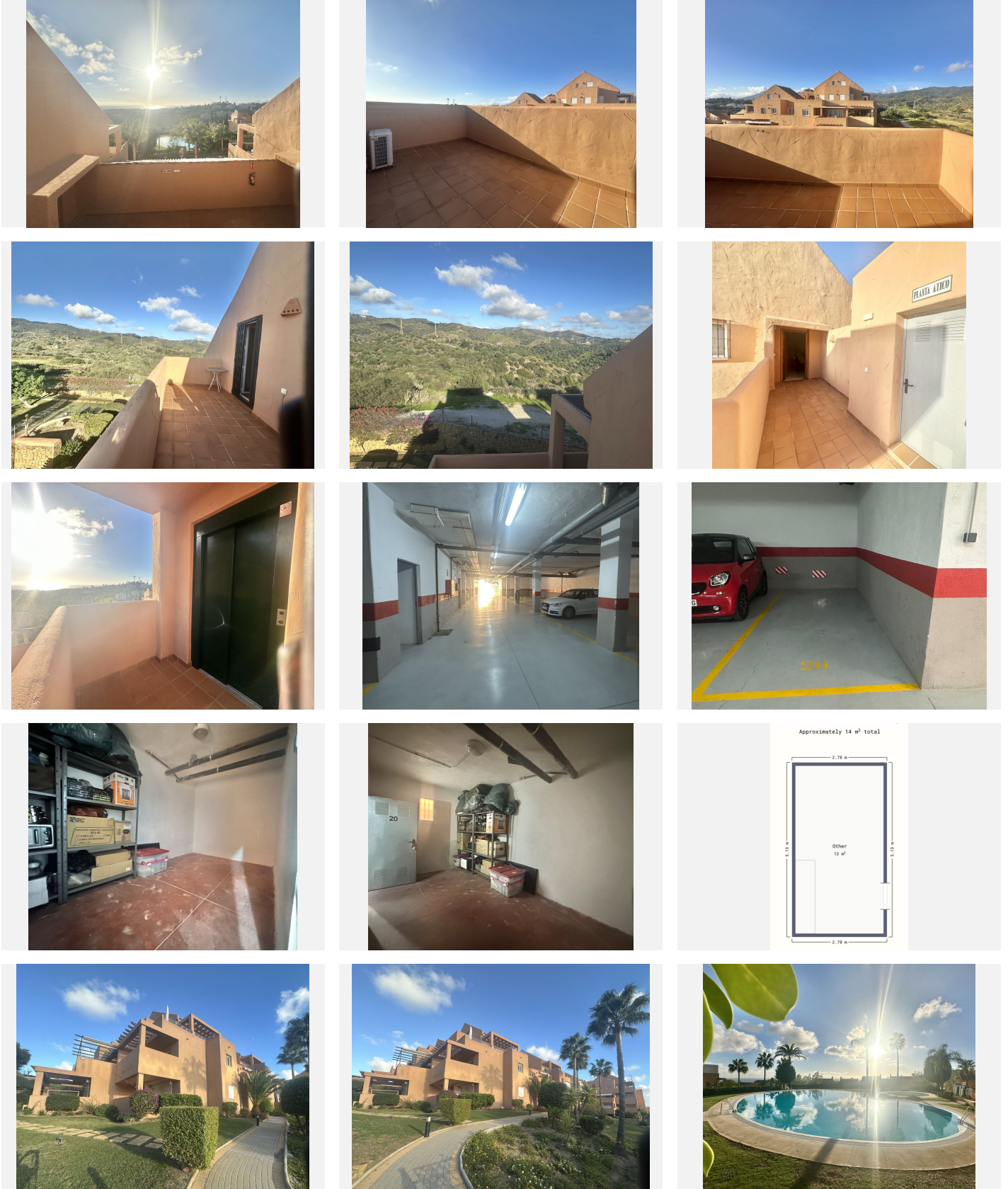
IDILIQ

ESTATES



IDILIQ

ESTATES



IDILIQ

ESTATES

