



FANTASTIC DUPLEX PENTHOUSE IN RESORT – PRACTICAL & EASY TO MANAGE INVESTMENT

 Benahavís

REF# R4961470 495.000 €

BEDS

3

BATHS

2

BUILT

131 m²

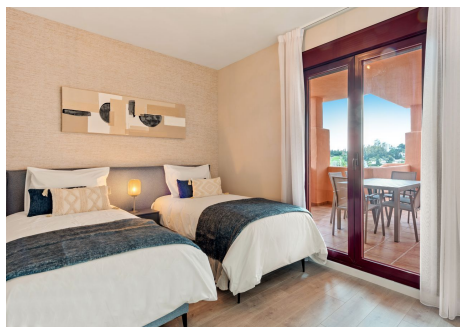
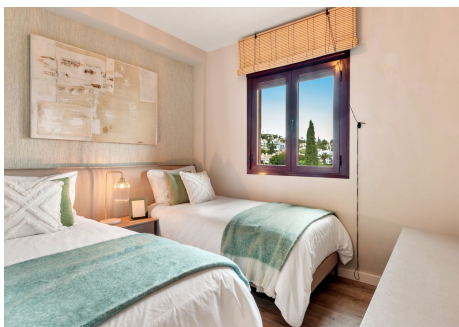
TERRACE

83 m²

A practical hassle-free investment. We are pleased to announce a small selection of available units, prices ranging from 245.000 € to 449.000 €. Contact us today for more information. These apartments offer the perfect blend of resort hotel services and amenities with the independence of an apartment. Enjoy access to multiple swimming pools, lush gardens, a co-working space, and a professionally equipped gym. The resort is a serene haven on the edge of El Paraiso Golf, and close to Villa Padierna Golf, Tramores Golf, Atalaya Golf, and Guadalmina Golf. Located at the intersection of Marbella, Estepona, and Benahavís, this prime spot ensures proximity to stunning beaches, top-notch golf courses, and a plethora of coastal activities. The resort's rental program makes owning a Marbella property effortless, allowing you to enjoy a fully serviced resort while also benefiting from consistent rental income potential. Parking and Storage Included. The photos provided are for illustrative purposes and may not correspond to the actual property.

IDILIQ

ESTATES



IDILIQ

ESTATES

