



TOWNHOUSE WITH MOUNTAIN VIEWS IN NUEVA ANDALUCÍA – MARBELLA

 Nueva Andalucía

REF# R4904860 499.000 €

BEDS

4

BATHS

2.5

BUILT

267 m²

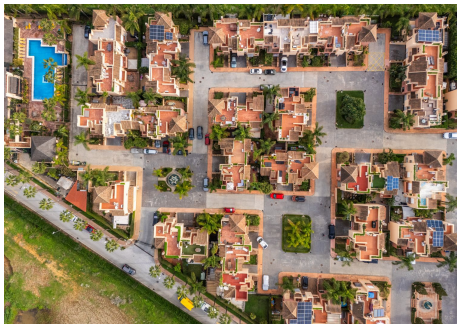
TERRACE

76 m²

Located in a secure and serene gated community, this charming townhouse combines comfort, privacy, and exceptional mountain views. The property spans a spacious 366 m², enhanced by a 58 m² terrace that serves as the perfect spot to soak in the tranquil surroundings. This townhouse offers a functional layout, with four bedrooms designed to accommodate both family living and guest stays. The main bedroom includes an en-suite bathroom for added privacy, while an additional bathroom and a guest toilet cater to convenience. The living and dining spaces are bright and airy. The terrace is an ideal extension of the interior, offering a delightful setting for outdoor dining or relaxing while admiring the mountain views on the rooftop. The townhouse is situated within a gated community, providing peace of mind and a quiet environment while maintaining proximity to nearby amenities, shops, and leisure options.

IDILIQ

ESTATES



IDILIQ

ESTATES

