



APARTMENT WITH TERRACE AND SEA VIEWS IN LA MAIRENA

 La Mairena

REF# R4895140 395.000 €

BEDS

2

BATHS

2

BUILT

117 m²

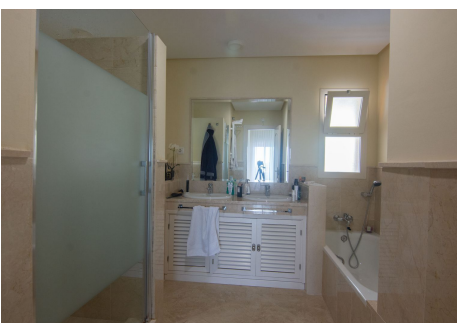
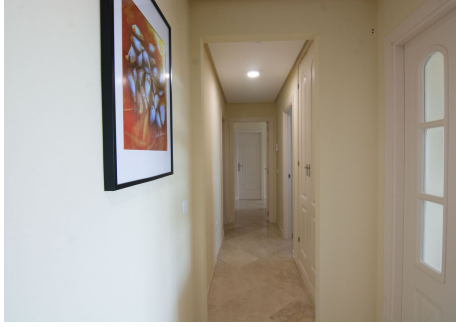
TERRACE

23 m²

This apartment was built in 2007, is situated within 'El Vicario' which is part of the prestigious La Mairena area. Offering the best of both worlds, beautiful scenery set in countryside with mountains and views across to the Mediterranean Sea and yet 10 mins to the center of Elviria, 18km to Marbella and 40 mins to Malaga Airport. This is an extremely high quality apartment, which has one open private parking space, separate storage room, paddle tennis and communal swimming pools. This is a truly wonderful location to fully appreciate and absorb the all year round climate and the fantastic Spanish culture. [Show Less](#)

IDILIQ

ESTATES



IDILIQ

ESTATES

