



## SOUTH-FACING GARDEN APARTMENT IN ELVIRIA, MARBELLA

 Elviria

REF# R4887235 675.000 €

BEDS

3

BATHS

2

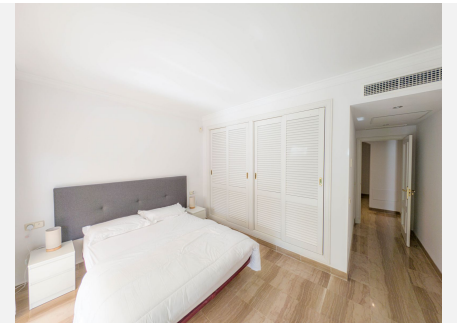
BUILT

157 m<sup>2</sup>

Discover luxury living in this absolutely stunning south-facing garden apartment, nestled in a highly sought-after development. This property features a seamless transition to a spacious 3-bedroom layout, complemented by a brand-new open-plan kitchen equipped with top-quality Siemens appliances. The dining area is enhanced with elegant glass curtains, creating a beautiful and versatile space for year-round enjoyment. Residents can indulge in the complex's extensive amenities, including four large swimming pools, two children's pools, and exquisitely maintained gardens that underscore the development's superior build quality. Perfectly positioned, the apartment is just a short walk from Elviria's renowned selection of fine dining, vibrant bars, and pristine beaches. An underground parking space is included, adding convenience and value to this exquisite home.

# IDILIQ

ESTATES



# IDILIQ

ESTATES

