

## STUNNING FRONTLINE BEACH DUPLEX IN BENALMÁDENA

 Benalmadena

REF# R4873873 419.000 €

BEDS

2

BATHS

1

BUILT

106 m<sup>2</sup>

TERRACE

12 m<sup>2</sup>

Living with cruising views! This stunning two bedroom, one bathroom duplex, located frontline beach in the charming area of Torremuelle, is an exceptional opportunity for those looking for a luxurious residence with panoramic open sea views. Situated just steps away from the prestigious British College, this 2 level duplex offers a unique living experience. From the moment you enter, you are greeted by breathtaking sea views that stretch as far as the eye can see. The intelligent design of the duplex takes full advantage of its prime location, allowing natural light to flood every corner of the house. The high quality PVC windows not only maximise light, but also provide exceptional insulation, ensuring a calm and serene environment at all times. The interior of the property has been completely renovated to the highest standards of quality and style. The kitchen, equipped with modern appliances, is a space where functionality meets luxury. High quality flooring and elegant fixtures and fittings add a touch of sophistication to each room. The meticulously designed bedrooms feature built-in wardrobes offering ample storage space, while the bathroom is fitted with contemporary fixtures and sleek finishes. Imagine waking up to the gentle sound of the waves and stepping out onto your private balcony to enjoy the sunrise at night. The complex also offers two stunning swimming pools where you can relax and enjoy the sunny climate of the Costa del Sol. And comfort is guaranteed

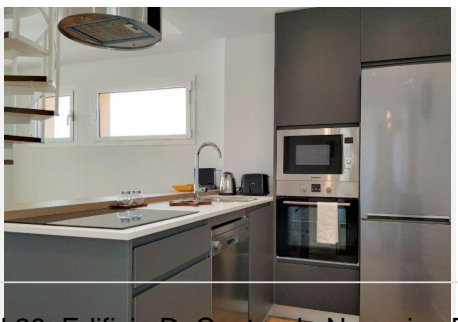
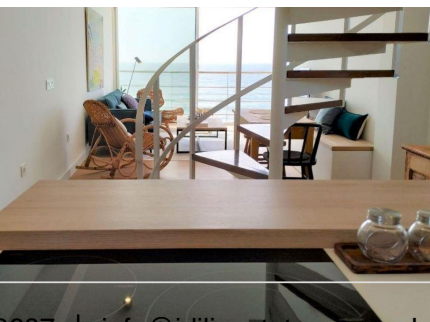
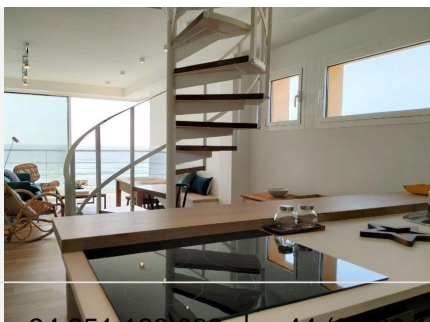
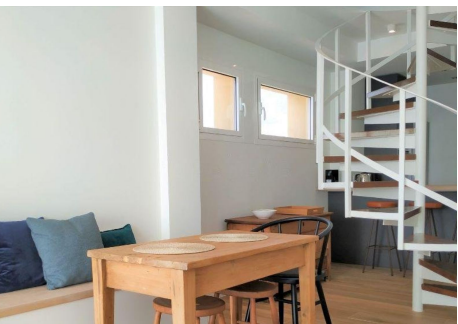
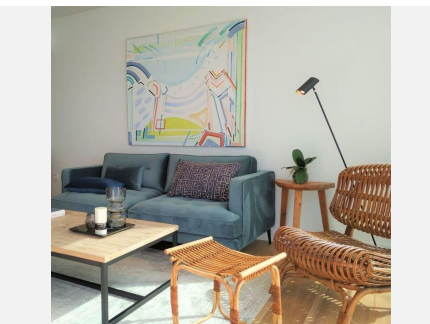
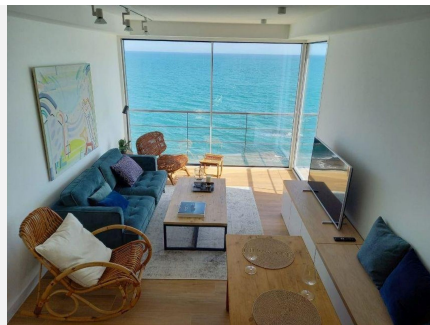
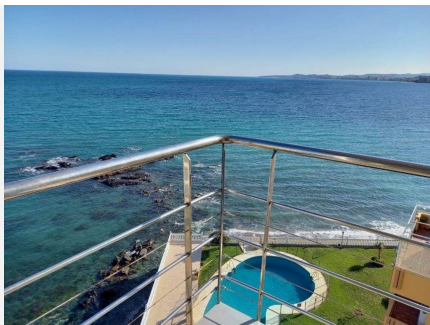
+34 951 123 083 | +44 (0)330 179 8687 | info@idiliqestates.com Local 28, Edificio D, Centro de Negocios Puerta

de Banús, N-340, Km 175, 29660 Nueva Andlucia

# IDILIQ

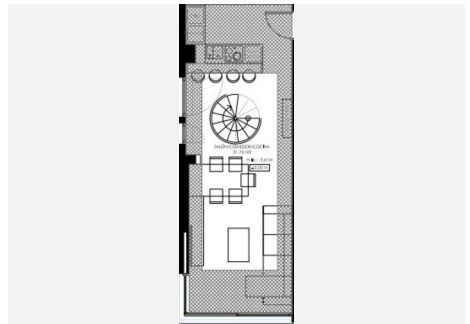
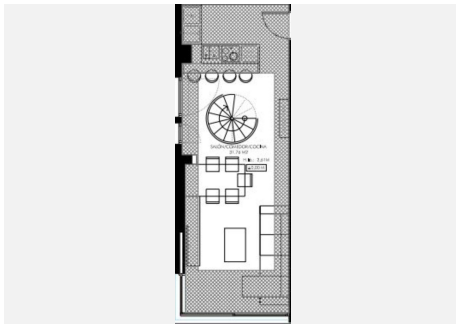
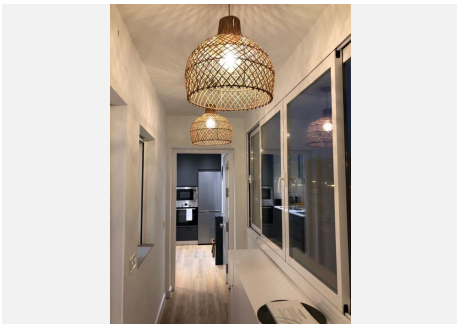
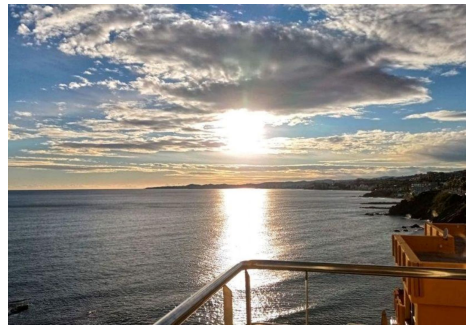
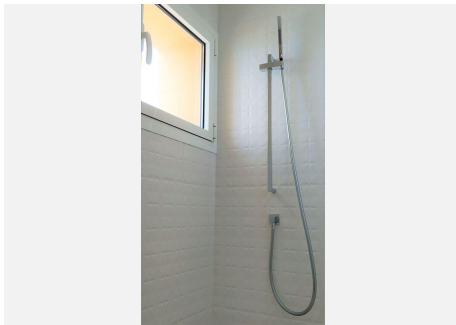
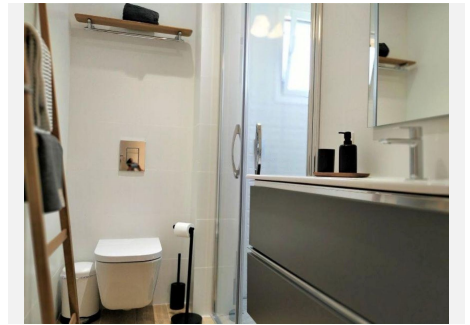
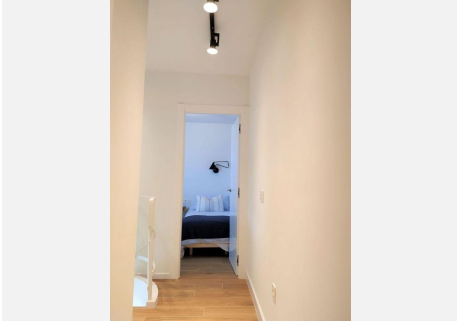
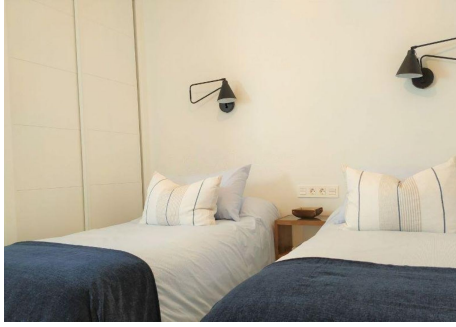
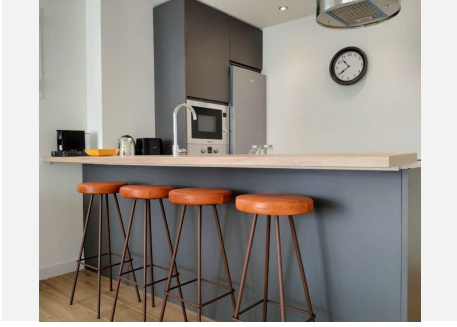
ESTATES

thanks to the building's lift, which makes it easy to access your home no matter what floor you are on. A particularly attractive feature of this property is its tourist licence, which means it is ideal for those looking for a lucrative investment. You can take advantage of this opportunity to rent out the property to tourists and visitors, generating significant income while you are not using it personally. In short, this beachfront duplex close to the British College, the commuter train and all the necessary amenities for your convenience, is much more than a property; it is a lifestyle. A place where luxury meets comfort, offering unrivalled views and exciting investment opportunities. Don't miss the opportunity to make this place your ideal home or investment on the beautiful coast of Torremuelle.



# IDILIQ

ESTATES



# IDILIQ

ESTATES

