



## BEAUTIFUL SOUTH-FACING APARTMENT IN ELVIRIA

 Elviria

REF# R4866700 420.000 €

BEDS

2

BATHS

2

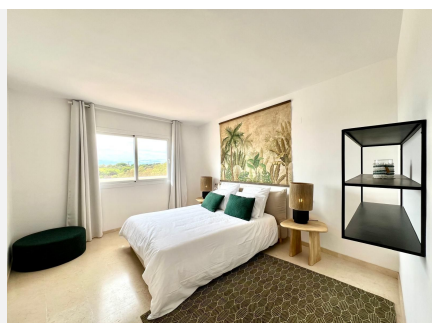
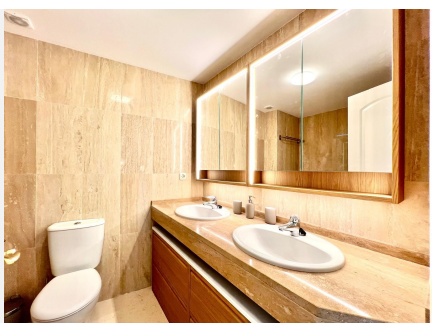
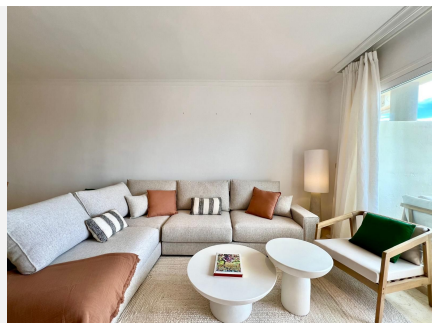
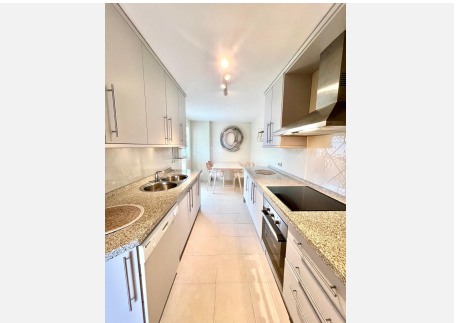
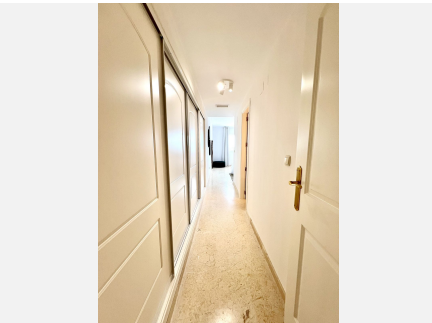
BUILT

135 m<sup>2</sup>

ELVIRIA. BEAUTIFULLY DECORATED AMPLE TOP APARTMENT AT SANTA MARIA GREEN HILLS. 2 BEDROOMS AND 2 BATHROOMS. SOUTH FACING OPEN TERRACE WITH OPEN VIEWS TO THE COUNTRY AND THE COMPLEX. 5 COMMUNAL POOLS PLUS AND ONE HEATED FOR THE WINTER SEASON. MARBLE FLOORS THROUGHOUT. AIR CONDITIONING. ONE AMPLE PARKING SPACE OF 33M2. LIFT. GATED COMPLEX. CAMERA CIRCUIT FOR SECURITY. WELL KEPT COMMUNAL AREAS AND GARDENS. BUILT IN 2005.

# IDILIQ

ESTATES



# IDILIQ

ESTATES

