



RENOVATED BEACHFRONT APARTMENT WITH INCREDIBLE SEA VIEWS

📍 Benalmadena

REF# R4866787 389.000 €

BEDS

2

BATHS

1

BUILT

75 m²

TERRACE

5 m²

Renovated Beachfront Apartment with Sea Views in Torremuelle, Benalmádena We present this charming beachfront apartment in Torremuelle, Benalmádena, a gem for those seeking a home by the sea with all modern comforts. Located just steps from the British College, this 2-bedroom, 1-bathroom fully renovated property combines contemporary style with a prime location. Key features: Beachfront location, with direct access to the Mediterranean and uninterrupted sea views. Fully renovated, with elegant, high-quality finishes throughout. Modern kitchen equipped with state-of-the-art appliances, perfect for enjoying home life with convenience. Bright and cozy living room with breathtaking panoramic sea views, ideal for relaxing or entertaining guests. Spacious bedrooms with built-in wardrobes, offering both space and functionality. Modern bathroom, designed with high-quality materials, providing a relaxing space. Building with elevator, ensuring easy access to the property. The residential complex boasts two pristine swimming pools, where residents can relax and enjoy the sun just steps away from the beach. Additionally, this property includes a tourist license, making it a perfect investment for short-term rentals, with the potential for additional, profitable income. Prime location in one of the most sought-after areas on the Costa del Sol, with immediate access to the beach and all nearby amenities. Don't miss this unique opportunity to live by the sea or make

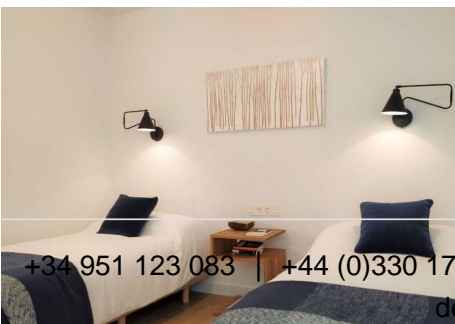
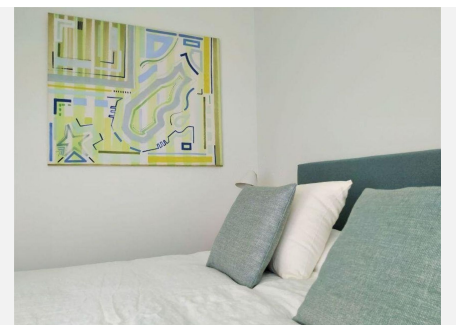
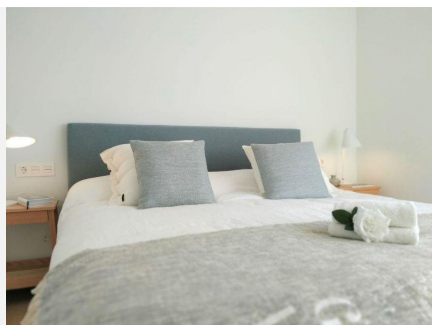
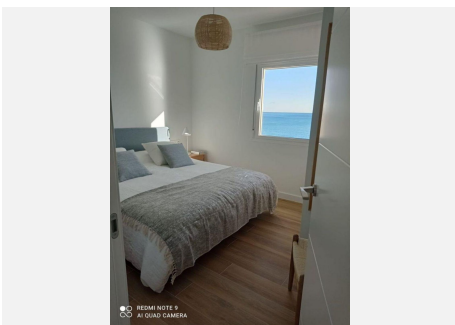
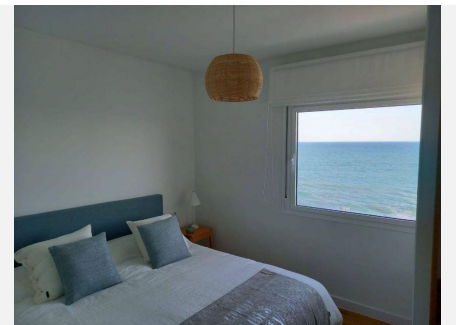
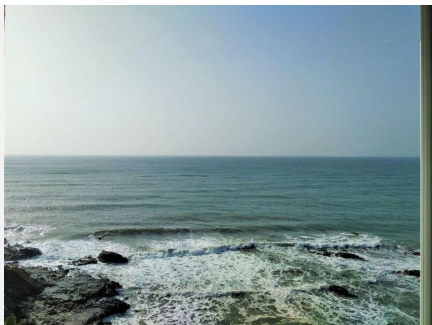
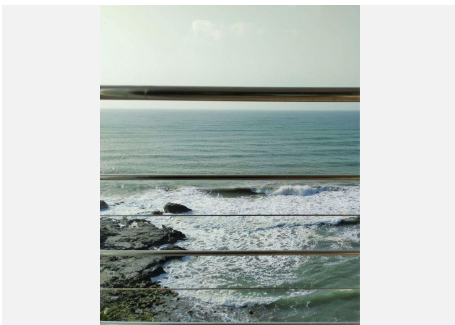
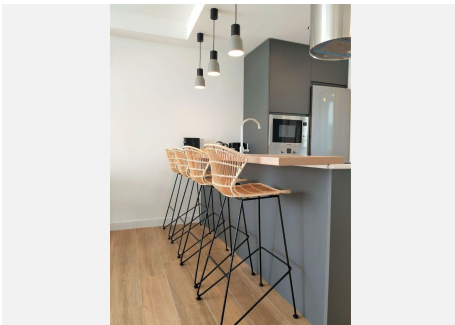
+34 951 123 083 | +44 (0)330 179 8687 | info@idiliqestates.com Local 28, Edificio D, Centro de Negocios Puerta

de Banús, N-340, Km 175, 29660 Nueva Andalucía

IDILIQ

ESTATES

a sound investment in one of Benalmádena's most coveted destinations!



+34 951 123 083 | +44 (0)330 179 8687 | info@idiliqestates.com Local 28, Edificio D, Centro de Negocios Puerta de Banús, N-340, Km 175, 29660 Nueva Andalucía

IDILIQ

ESTATES

