



## STUNNING MODERN PENTHOUSE DUPLEX WITH PANORAMIC SEA VIEWS

 Benalmadena

REF# R4866811    750.000 €

BEDS

3

BATHS

2

BUILT

102 m<sup>2</sup>

TERRACE

106 m<sup>2</sup>

This modern duplex penthouse offers breathtaking sea views and an exceptional location in Benalmadena, just a short drive from the beach and the charming town center of Benalmadena Pueblo. The property features an open-plan living room with a fully equipped kitchen, three bedrooms, two bathrooms, and ample terrace space on both the main floor and the top floor, accessible from one of the bedrooms. The rooftop terrace provides stunning panoramic views of the surrounding area and the sea, complete with a private jacuzzi and plenty of space for sunbathing. Inside, the apartment boasts ceramic tile flooring throughout, as well as hot and cold air conditioning, underfloor heating, smoke detectors, and alarm systems. The bedrooms are fitted with built-in wardrobes for added convenience. Situated in a well-maintained residential complex with beautiful communal areas, such as a stunning communal pool, gym, paddle tennis courts, jacuzzi, whirlpool, sauna, a multipurpose room with a movie theatre, and a children's play area. The purchase price includes two underground parking spaces and a storage room. Located in Benalmadena, the property close to the the center of Benalmadena Pueblo, known for its variety of restaurants and bars, and only a short drive from the area's best beaches. With easy access to the coastal road and highway, Malaga Airport is just a 15-minute drive away. This apartment is perfect as a second residence, holiday home, or

+34 951 123 083 | +44 (0)330 179 8687 | [info@idiliqestates.com](mailto:info@idiliqestates.com) Local 28, Edificio D, Centro de Negocios Puerta

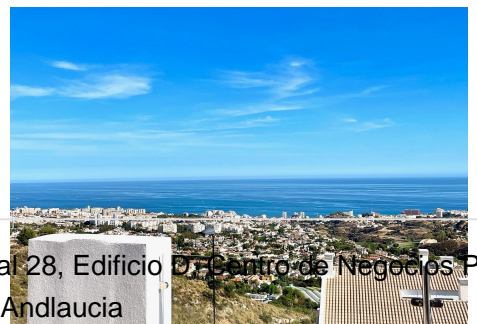
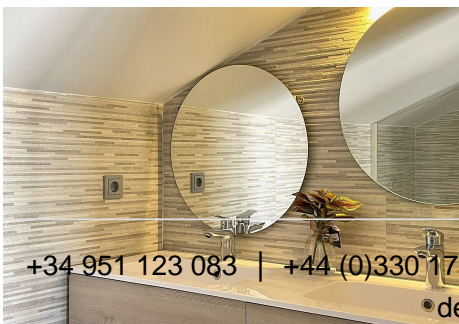
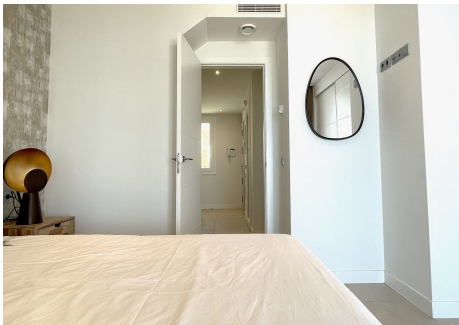
de Banús, N-340, Km 175, 29660 Nueva Andlucia



# IDILIQ

ESTATES

investment property, offering excellent long-term rental potential.



+34 951 123 083 | +44 (0)330 179 8687 | [info@idiliqestates.com](mailto:info@idiliqestates.com) Local 28, Edificio D7 Centro de Negocios Puerta  
de Banús, N-340, Km 175, 29660 Nueva Andalucía



# IDILIQ

ESTATES





# IDILIQ

ESTATES

