



ELEGANT TOWNHOUSE WITH PANORAMIC VIEWS IN RANCHO DOMINGO IN BENALMÁDENA

 Benalmadena Pueblo

REF# R4867678 595.000 €

BEDS

3

BATHS

3

BUILT

176 m²

PLOT

400 m²

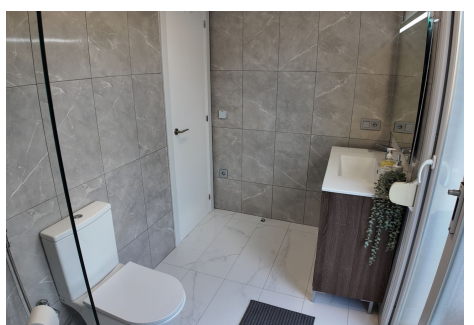
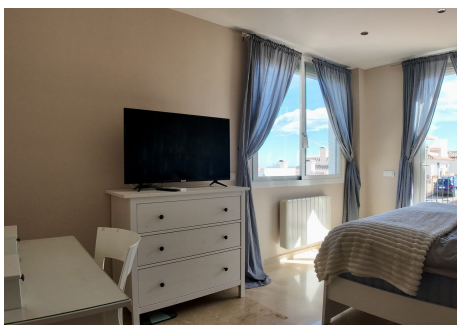
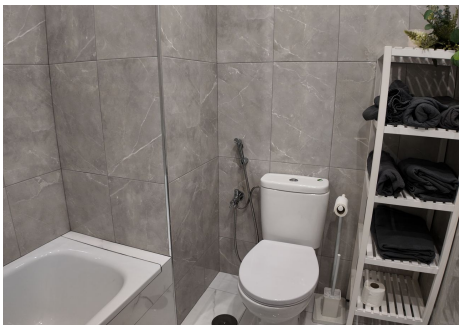
TERRACE

60 m²

Elegant Townhouse with Panoramic Views in Rancho Domingo, Benalmádena Discover this stunning 5-bedroom townhouse spread over three levels, nestled in the exclusive Rancho Domingo area of Benalmádena. This spacious property offers an exceptional blend of comfort, privacy, and breathtaking views of the mountains, city, and Mediterranean Sea. Upon entering, you'll be welcomed by a bright, expansive living room that opens up to multiple terraces, perfect for enjoying the panoramic scenery and alfresco dining. The fully fitted kitchen is ideal for culinary enthusiasts, equipped with everything you need to entertain and prepare meals in style. The property boasts 5 well-sized bedrooms, including a luxurious master suite with its own private terrace, two additional bedrooms, and two more bedrooms conveniently located on the basement level, providing direct access to the garage. Outside, a private garden and pool offer a tranquil retreat, while the community pool allows for extra relaxation shared with neighbors. Whether you're seeking a family home or a vacation retreat, this townhouse provides the perfect balance of modern living and serene surroundings. Don't miss the opportunity to own this exceptional property in one of Benalmádena's most sought-after communities!

IDILIQ

ESTATES



IDILIQ

ESTATES



IDILIQ

ESTATES



IDILIQ

ESTATES

