



CHARMING TRADITIONAL TOWNHOUSE IN ELVIRIA CLOSE TO GOLF

 Elviria

REF# R4850803 310.000 €

BEDS

2

BATHS

1.5

BUILT

71 m²

PLOT

130 m²

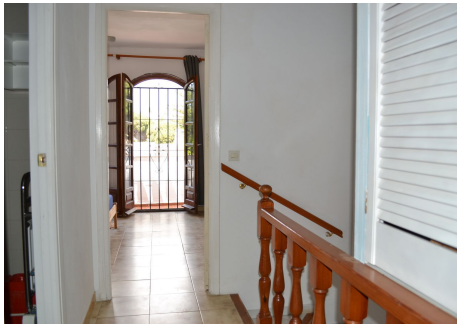
TERRACE

30 m²

Townhouse, Elviria, Costa del Sol. 2 Bedrooms, 1.5 Bathrooms, Built 71 m², Terrace 35 m². Setting : Commercial Area, Close To Golf, Close To Shops, Close To Sea, Urbanisation. Orientation : East, West. Condition : Good, Renovation Required. Pool : Communal, Children`s Pool. Features : Fitted Wardrobes, Near Transport, Private Terrace, WiFi, Marble Flooring. Kitchen : Fully Fitted. Garden : Communal. Security : Gated Complex. Parking : Communal. Utilities : Electricity, Gas. Category : Bargain, Cheap, Investment.

IDILIQ

ESTATES



IDILIQ

ESTATES

