



## SPECTACULAR APARTMENT WITH PRIVATE GARDEN AND PANORAMIC SEA VIEWS

📍 Benalmadena

REF# R4855276 425.000 €

BEDS

2

BATHS

2

BUILT

78 m<sup>2</sup>

TERRACE

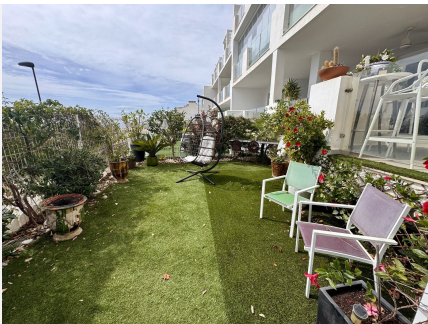
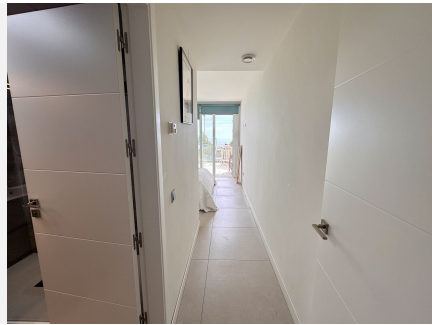
45 m<sup>2</sup>

Spectacular ground-floor apartment with private garden and panoramic sea views. This charming property features a cozy entrance hall, a fully equipped open kitchen with a laundry area, and a spacious living-dining room that opens to an impressive terrace of over 40 m<sup>2</sup>, perfect for enjoying the sea views. The apartment includes two bright bedrooms and two bathrooms, one of which is en suite. Highlighted features include underfloor heating, double glazing on all windows, and centralized air conditioning, ensuring comfort year-round. Additionally, the private garden offers a perfect space to relax. The price includes a parking space and a storage room. Bayview Homes is a unique residential complex located in Benalmádena, surrounded by a tranquil, lush environment. The community boasts a pool with sea views, paddle court, gym, jacuzzi, and sauna, as well as beautiful landscaped gardens inviting relaxation. The location is unbeatable, with easy access to the highway, tennis clubs, golf courses, marinas, amusement parks, a dolphinarium, schools, healthcare centers, hospitals, and supermarkets. All of this under a gentle Mediterranean climate that guarantees an exclusive lifestyle close to the sea. Visit us and discover your new favorite spot!



# IDILIQ

ESTATES





# IDILIQ

ESTATES

