



CHARMING GROUND FLOOR APARTMENT IN CALAHONDA

 Calahonda

REF# R4839904 345.000 €

BEDS

2

BATHS

2

BUILT

85 m²

TERRACE

30 m²

Ground Floor Apartment in Calahonda, Costa del Sol A charming and spacious 2-bedroom, 2-bathroom ground-floor apartment with 85 m² of beautifully designed living space and an additional 15 m² private terrace. Key Features: Location: Ideally situated in a vibrant urbanization, just moments away from golf courses, marinas, shops, restaurants, and beautiful beaches. Also close to the town center, port, and peaceful forest areas. Orientation: South-East facing, ensuring plenty of natural light throughout the day. Condition: Move-in ready with an immaculate, well-maintained interior. Pool: Enjoy access to a well-kept communal pool area, perfect for relaxation. Climate Control: Equipped with air conditioning (hot and cold) and a cozy fireplace, ensuring comfort all year round. Views: Overlooks lush gardens, offering a serene and peaceful atmosphere. Interior Features: Covered terrace, ideal for outdoor dining or entertaining. Ample storage with fitted wardrobes, a utility room, and a separate storage room. Elegant marble flooring and double-glazed windows throughout. Ensuite bathroom in the master bedroom for added privacy and convenience. Fiber optic internet connection, perfect for remote work or high-speed browsing. Additional Highlights: Fully furnished with stylish, quality pieces, making it ready to move in. Fully fitted kitchen equipped with modern appliances. Community & Security: Located in a secure, gated complex with both

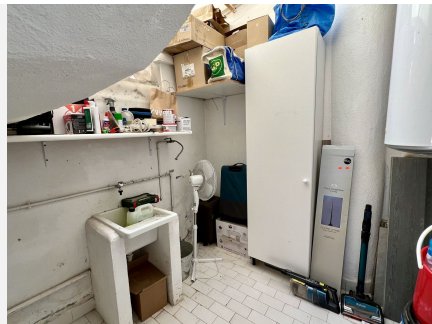
+34 951 123 083 | +44 (0)330 179 8687 | info@idiliqestates.com Local 28, Edificio D, Centro de Negocios Puerta

de Banús, N-340, Km 175, 29660 Nueva Andlucia

IDILIQ

ESTATES

private and communal parking available. Beautifully maintained communal gardens that add to the overall appeal of the complex. This apartment is perfect for those looking to enjoy the best of Costa del Sol living, with convenience, comfort, and style all in one.



IDILIQ

ESTATES

