



PENTHOUSE DUPLEX 3 BEDROOMS 2 BATHROOMS IN BENAHAVÍS

 Benahavís

REF# R4827628 480.000 €

BEDS

3

BATHS

2

BUILT

119 m²

TERRACE

89 m²

3 bedroom Penthouse Duplex with touristic license, recently renovated, fully furnished and beautifully decorated.

Surrounded by extraordinary large terraces on the south, east and west sides on both levels; and with access from the living room, master bedroom, second bedroom and top of the stairs; providing ample outdoor space and panoramic views of the La Concha mountains and the renowned El Paraíso Golf Course; this duplex penthouse boasts a fully fitted modern kitchen, a spacious living room, and elegant guest bedrooms along with a guest bathroom. The top floor is dedicated exclusively to the master bedroom, complete with an ensuite bathroom and two terraces.

Homeowners and guests can enjoy multiple swimming pools, lush gardens, a co-working space, and a professionally equipped gym.

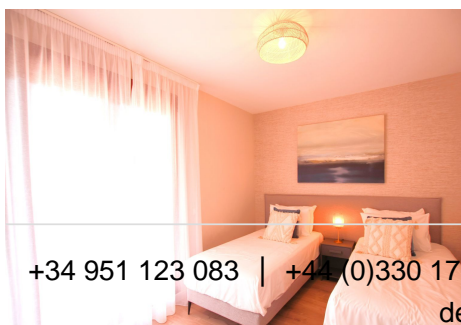
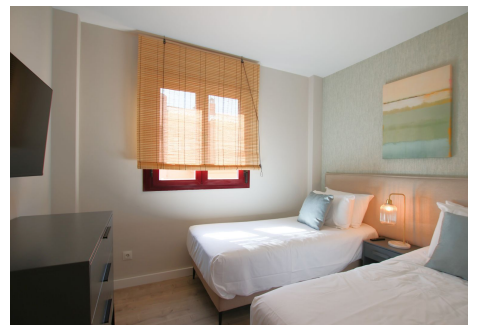
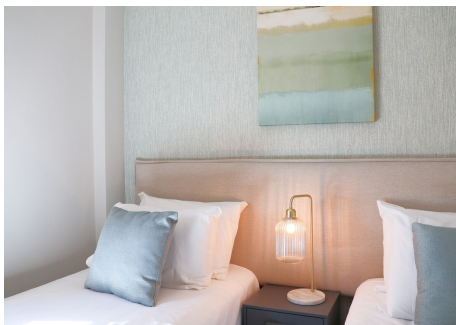
IDILIQ

ESTATES

This is an ideal opportunity for those seeking a tranquil holiday retreat close to golf courses and beaches. This Frontline Golf resort is located on the edge of El Paraiso Golf and a stones throw away from Villa Padierna Golf, Tramores Golf, Atalaya Golf, and Guadalmina Golf. Situated at the intersection of Marbella, Estepona, and Benahavís, it is a short 10 minute drive to Playa del Saladillo beach.

The property comes with an underground parking space and storage room, as well as a rental license and easy rental management through the resort.

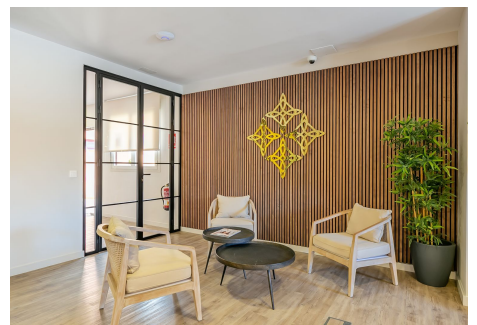
We are pleased to announce a limited selection of available units, with prices ranging from 245,000 € to 510,000 €. Contact us today for more information.



+34 951 123 083 | +44 (0)330 179 8687 | info@idiliqestates.com Local 28, Edificio D, Centro de Negocios Puerta de Banús, N-340, Km 175, 29660 Nueva Andalucía

IDILIQ

ESTATES



IDILIQ

ESTATES

