



SEMI-DETACHED 2 MINS TO BEACH

 Benalmadena Costa

REF# R4821511 555.000 €

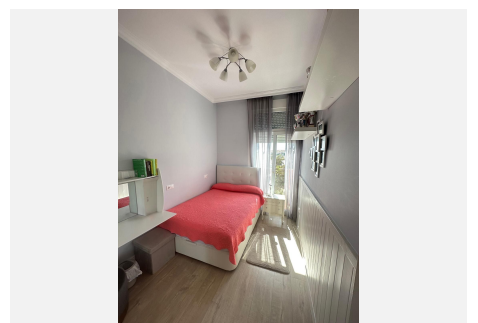
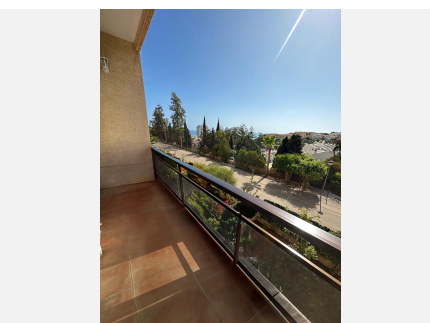
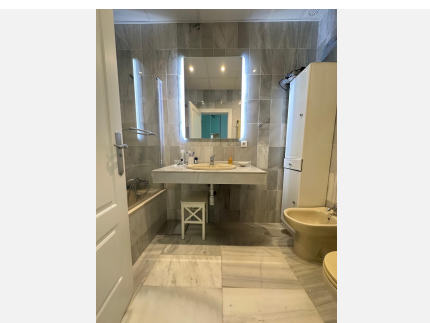
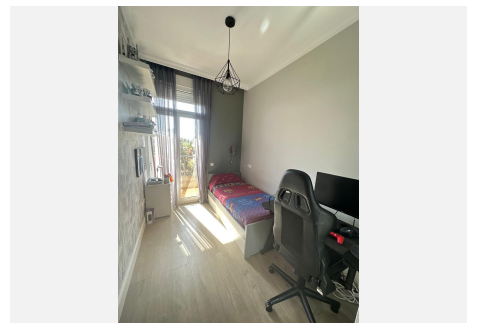
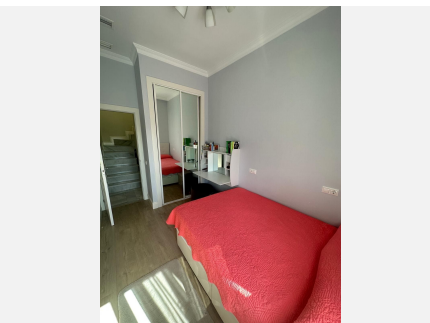
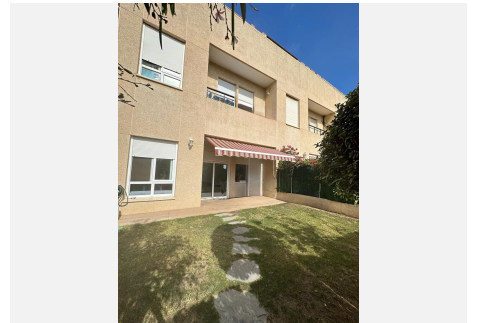
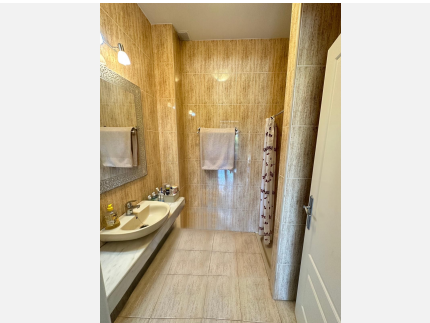
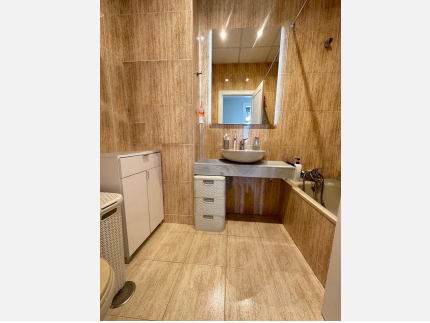
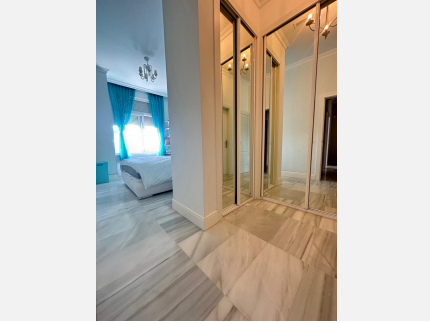
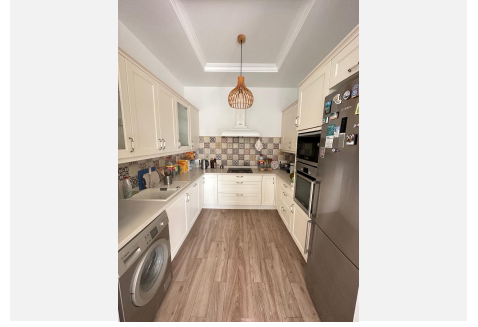
BEDS	BATHS	BUILT	PLOT	TERRACE
3	3	155 m ²	50 m ²	23 m ²

"Welcome to your new home in the El Coloso urbanization! This spectacular semi-detached house, completely renovated in 2020, offers the perfect balance between comfort and luxury. Located in Benalmádena Costa, just 2 minutes walk from the beach, this property is located on a non-passable street that guarantees tranquility and privacy. With open views to the south, you can enjoy stunning panoramic views of the sea from the comfort of your home. The El Coloso urbanization has 24-hour security by a security guard, three community pools and extensive green areas, perfect for relaxing and enjoying the surroundings. The house has a private garden of 50 square meters and parking for several vehicles. On the ground floor, you will find a spacious 34m² living room, a renovated 7.5m² kitchen, a 3m² dressing room and a bathroom with a shower. On the first floor, there are three bedrooms, two of them with a terrace, and two full bathrooms. The master bedroom is en suite and all rooms have fitted wardrobes. In addition, the 65m² attic includes a wooden house used as an additional bedroom with its own air conditioning. With solar panels installed for hot water and a 300-liter tank, this house is not only modern and functional, but also energy efficient. With a constructed area of 165m² and a useful area of 136m², this property offers space and comfort for the whole family. Don't miss the opportunity to live in this coastal paradise, close to schools and supermarkets. Contact us for more information and to schedule a visit!"

+34 951 123 083 | +44 (0)330 179 8687 | info@idiliqestates.com Local 28, Edificio D, Centro de Negocios Puerta de Banús, N-340, Km 175, 29660 Nueva Andalucía

IDILIQ

ESTATES



IDILIQ

ESTATES

