



## HOUSE 5 BEDROOMS 7 BATHROOMS IN TORRENUUEVA

 Torrenueva

REF# R5430799 1.795.000 €

BEDS

5

BATHS

7

BUILT

389 m<sup>2</sup>

PLOT

717 m<sup>2</sup>

TERRACE

191 m<sup>2</sup>

Located in the sought-after area of Torrenueva, just 200 metres from the beach and within walking distance of La Cala de Mijas, this exceptional contemporary villa combines striking architecture, premium finishes, and cutting-edge technology to create a truly unique home on the Costa del Sol.

Completed in 2017, the property has been thoughtfully designed to maximise natural light, open spaces, and seamless indoor-outdoor living. The interiors are defined by elegant microcement finishes, clean architectural lines, and carefully selected materials that create a calm, sophisticated atmosphere throughout.

The main living level features a spacious open-plan lounge with fireplace, dining area, and a fully equipped designer kitchen, all opening directly onto the terraces. This floor also offers three generous en-suite bedrooms, a home office, and a guest toilet.

The lower level includes a large garage with space for four vehicles, a laundry room, two storage rooms, and two additional bedrooms with bathrooms, ideal for guests or independent family accommodation. A stylish glass elevator connects every floor, including the spectacular rooftop terrace.

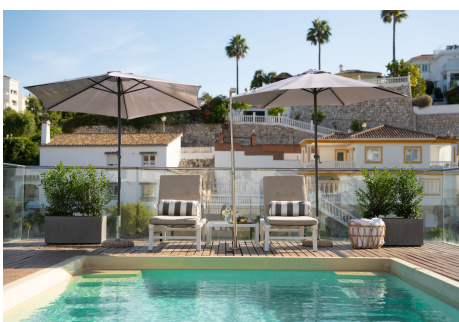
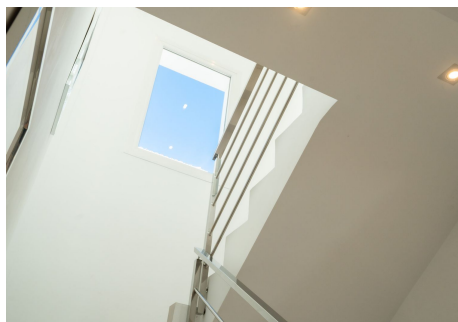
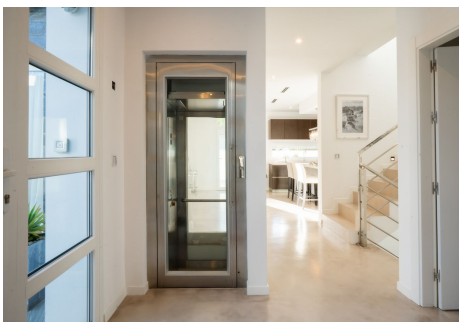
+34 951 123 083 | +44 (0)330 179 8687 | [info@idiliqestates.com](mailto:info@idiliqestates.com) Local 28, Edificio D, Centro de Negocios Puerta de Banús, N-340, Km 175, 29660 Nueva Andlucia

# IDILIQ

ESTATES

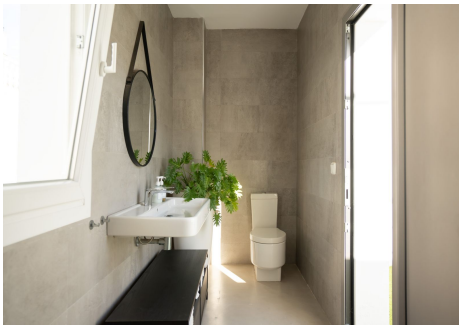
Designed for entertaining and relaxation, the rooftop features a private swimming pool with sea views, outdoor shower and toilet, a fully equipped outdoor kitchen, barbecue area, and elegant lounge spaces, creating the perfect setting to enjoy the Mediterranean lifestyle.

Finished to the highest standards, the villa also benefits from underfloor heating, integrated home automation, air conditioning, and a comprehensive security system.



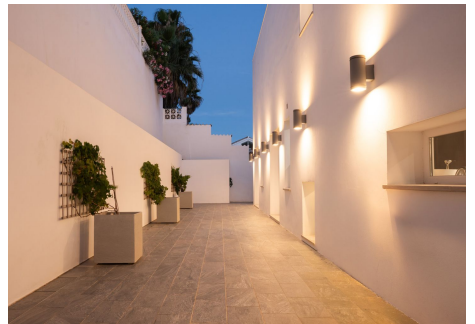
# IDILIQ

ESTATES



# IDILIQ

ESTATES



# IDILIQ

ESTATES

